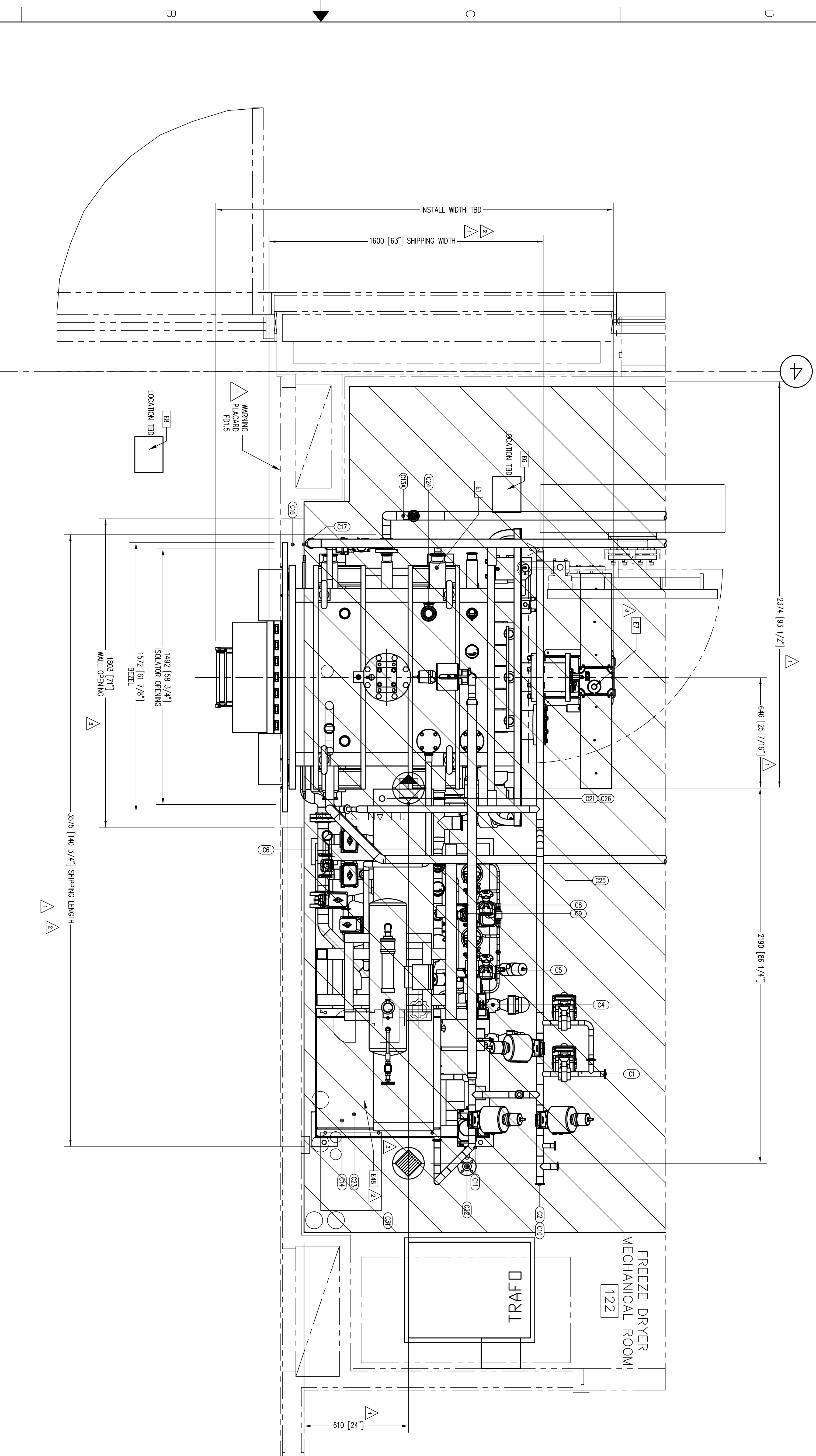


EQUIPMENT SCHEDULE

ITEM#	QTY.	DESCRIPTION
E1	1	CHAMBER/CONDENSER ASSEMBLY
E2	1	HYDRAULIC STOPPING CYLINDER
E3	1	LOADING/UNLOADING SLOT DOOR ASSEMBLY
E6	1	MACHINE ROOM HIM PANEL
E7	1	UNLOADING PUSHER
E8	1	CLEANROOM HIM
E14	1	CHAMBER FRAME
E25	1	EXPANSION TANK (30 L/8 GAL)
E26	1	STERILE FILTER RACK
E28	1	SLOT DOOR ACTUATION
E48	1	OMNIFLUX COOLD BOX, 12kW (CONDENSER)



NOTES:

1. THE EQUIPMENT AND INFORMATION SHOWN IN THIS DRAWING ARE INTENDED TO DESCRIBE THE EQUIPMENT PROVIDED BY IMA LIFE IN ACCORDANCE WITH ALL APPLICABLE PURCHASE ORDER SPECIFICATIONS. THE FOLLOWING ARRANGEMENT AND ASSEMBLY DRAWINGS ARE INCLUDED IN THE SCOPE OF THIS DRAWING.
 - a. CHAMBER/CONDENSER SKID ARRANGEMENT - EFT114-0004
 - b. REFRIGERATION SKID ARRANGEMENT - EFT114-0006
2. BUILDING INFORMATION IS SHOWN FOR REFERENCE ONLY AND IS NOT THE SCOPE OF IMA LIFE. BUYER IS RESPONSIBLE FOR PLACING OF ALL IMA LIFE EQUIPMENT INTO THEIR DRAWINGS.
3. ALL DIMENSIONS ARE IN MILLIMETERS [INCHES] UNLESS OTHERWISE NOTED.
4. LEAVE AREA CLEAR FOR COMPRESSOR, HEATER REMOVAL ACCESS AND REQUIRED ELECTRICAL MAINTENANCE AREA.

5. LEAVE AREA CLEAR FOR IMA LIFE INTERCONNECTING PIPES AND WIREWAYS.

RESERVED SPACE FOR PIPES AND WIREWAYS

6. DENOTES BUILDING REFERENCE POINT.

7. DENOTES CUSTOMER FLOOR DRAIN. LOCATION OF FLOOR DRAINS SHOWN ARE PROPOSED LOCATIONS BY IMA LIFE TO BEST SUIT FREEZE DRYERS.

8. DENOTES CUSTOMER POTENTIAL PRODUCT DRAIN. LOCATION OF POTENTIAL PRODUCT DRAINS SHOWN ARE PROPOSED LOCATIONS BY IMA LIFE TO BEST SUIT FREEZE DRYERS.

9. BUYER TO PIPE ALL SAFETY VALVE AND VACUUM PUMP EXHAUSTS TO SAFE LOCATION.

10. FOR SKID WEIGHT DISTRIBUTION REFER TO EFT114-0010.

NO.	REVISIONS	DOC. NO.	REVISIONS BY	DATE	APPROV.	ALL RIGHTS RESERVED. REPRODUCTION AND PUBLICATION PROHIBITED.
3	UPDATE ASSEMBLY & CONNECTIONS. SHOW BRIDGE PLATE. RELOCATE SOLVENT DRAIN.	1688	DIS	18 APR 17	DIS	
2	CHANGED SHIPPING DIMENSIONS. UPDATED EQUIPMENT & SCHEDULE TO MATCH SKID CHANGES.	1574	DIS	18 JAN 17	SCN	
1	ADD MISSING DIMENSION. ADD OVERHEAD AC DUCT. ADD POTENTIAL PRODUCT CONNECTION.	1155	JMR	15 APR 16	JMR	

IMA LIFE
 Asmptic Processing & Freeze Drying Solutions
 2175 Military Road
 Tonawanda, New York 14150

SANOI PASTEUR
 LYOMAX 3 FREEZE DRYER
 GENERAL ARRANGEMENT INTEGRAL
 CHAMBER/CONDENSER

DATE TO MAR 16
 APPROVED: JMR DATE: 16 MAR 16
 ENG. SUPV. APP.: BSA DATE: 24 MAR 16
 CHIEF ENG. APP.: DDL DATE: 24 MAR 16
 QUALITY TO CONFORM TO EPOS
 UNLESS OTHERWISE NOTED
 FINISH: R:25
 FILE NAME: EFT1140004.dwg
 REF. NO.: EFT140004
 SCALE: 1:1
 DWG: EFT114-0004