

Descaling Machine for Salmon and similar fish

ÍS-693

Technical Data:

- Processes: Salmon and similar
- Throughput rate: 25-50 fishes/min
- Working range: 1-7 kg
- Fish thickness max 95mm
- Fish height max 200mm
- Operator: 1 person
- Water consumption: 20 l/min at 2 bar 30 l/min at 5 bar
- Power consumption: 4 kW
- Weight 365 Kg

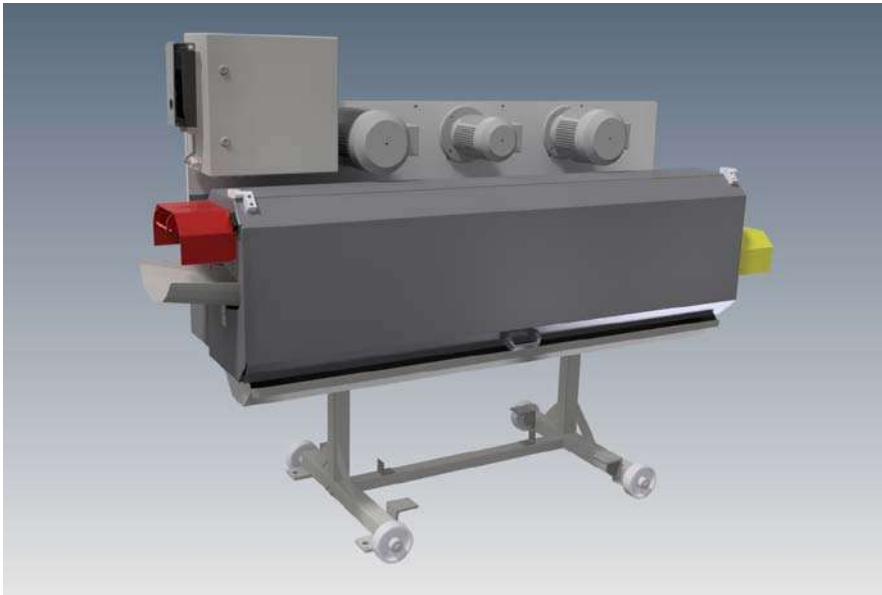
The indicated limits of the working ranges may vary as a function of the proportion, quality and nutritional condition of the fish. In order to achieve an optimal result, it is recommended to adjust the machine within its working range to the fish sizes mainly to be processed. Live fish and those in the state of rigor mortis cannot be processed.

Illustrations and dimensions are approximate and not binding. Subject to design changes in the interest of technical progress. Actual scope of supply is specified in our quotations and order confirmations and may differ from descriptions and photos of this leaflet.

Attention!

For the illustration of technical details the safety devices and protection mechanisms are partly not shown in operative condition.

When operating the machine, all corresponding devices and instructions referring to the safety of the machine are to be utilized and/or observed!



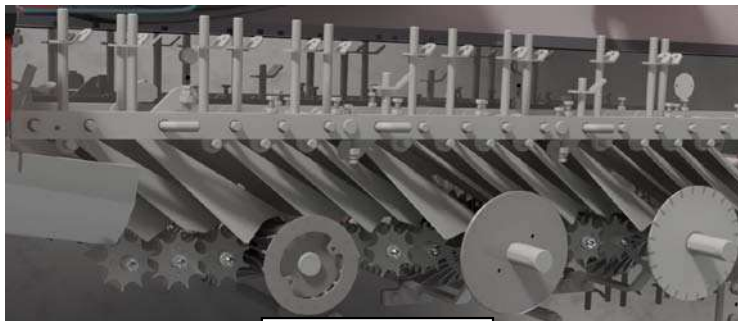
Customer Benefits:

- Suitable for installation on or off shore.
- Manufactured to the high standards of the BAADER group.
- It is easy to adjust the machine for a different species of fish.

Machine Application and Features:

This high speed fish descaling machine is equipped with six descaling spindles with different geometries to descale fish like Salmon and similar species cleanly and efficiently.

The speed of the fish through the machine is adjustable by one button.



Adjustable geometry

