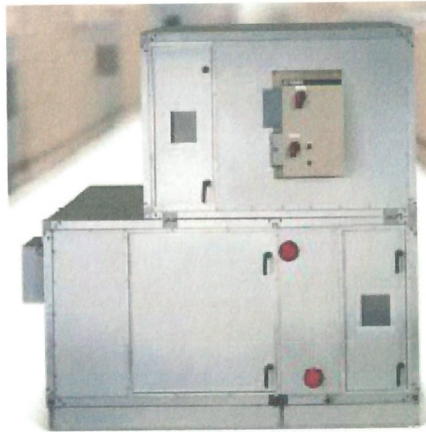


EQUIPMENT SUBMITTAL FOR APPROVAL

PROJECT: Merck Danville

LOCATION: Cherokee Plant



York Solution Outdoor Air Handling Unit

EQUIPMENT	Solution XTO
UNIT TAGS	AHU-1
QUANTITY	1

SOLD TO:
Merck, PO 8103487202

CONSULTING ENGINEER:
Hargrove

PREPARED BY:

Doug Anstadt 484-684-2207
douglas.d.anstadt@jci.com

DATE:
Monday, May 17, 2021

REVISION:
0

Unit Specification Text Section

Product Type: Solution XTO

Unit Tags: AHU-1



TABLE OF CONTENTS

(Solution XTO)

Equipment Release/Configuration

Form BOM Data

Performance Ratings

Performance Report

Fan Curves

Unit And Wiring Drawings

Unit Spec Text

Attachments

Receiving / Rigging

IOM Information

Startup Checklist

Additional Data Sheets

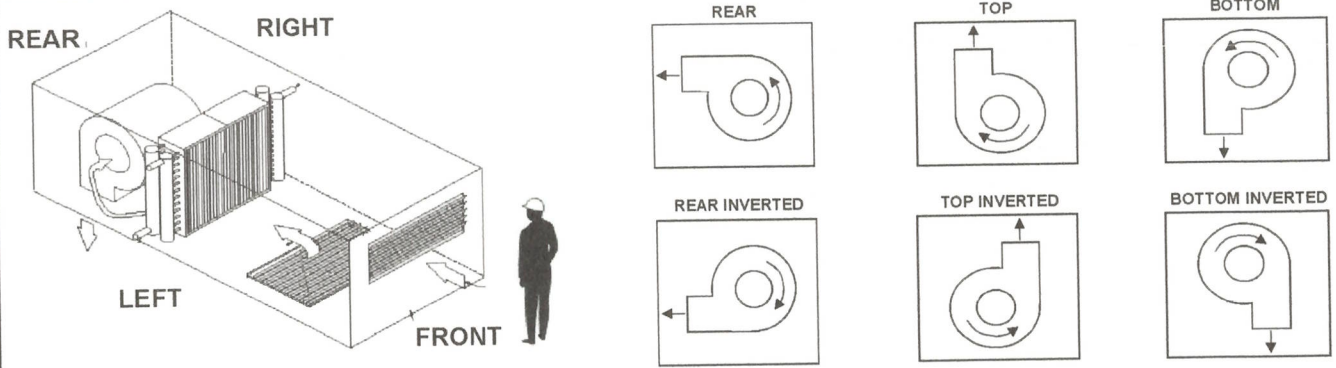
Warranties

Submittal Approval Page

AHU Equipment Release / Configuration Process

Attached you will find preliminary drawings representing the unit(s) we submitted on this project. Please review these forms, make any required modifications, sign each page indicating your approval and then fax them back to my attention. Please note that equipment cannot be released for fabrication until these forms are completed and returned with your signature of approval. Please feel free to contact our office if you have any questions regarding the attached information.

Unit Section	Items for Review	Potential Configurations
Supply Fan	Supply /Return Fan Discharge Location (see below)	Top, Top Inverted, Bottom, Bottom Inverted, Rear, Rear Inverted
	Supply /Return Fan Motor Location	Left or Right
	Fan Motor Voltage & Phase	208, 230, 460, 480, Single or Three Phase
Coils (CHW, HW, DX, EH)	CHW Cooling Coil Hand Connections	Left or Right
	DX Cooling Coil Hand Connections	Left or Right
	Heating Coil Hand Connections	Left or Right
	DX Coil Circuits	One or Two
	Electric Heat Voltage & Phase	208, 230, 460, 480, Single or Three
	Condensate Drain Connection	Left or Right
Plenums	Discharge Plenum Openings (if required)	Left, Right, Top, Bottom
	Inlet Plenum Openings (If required)	Left, Right, Top, Bottom, Front
	Inlet Plenum Dampers (if required)	Left, Right, Top, Bottom, Front (Specify Return Air & Outside Air)
Electrical	VFD Location (if required)	Left or Right
	Starter Location (if required)	Left or Right
	Disconnect Location (if required)	Left or Right
	Power connections	Single Point or Multiple Point
General	Unit Height	Please review contract drawings to approve attached dimensions
	Unit Width	Please review contract drawings to approve attached dimensions
	Unit Length	Please review contract drawings to approve attached dimensions
	Unit Weight	Please review and approve
	Access Door Locations (if required)	Left, Right or Both
	Roof Curb (if required)	Check height, slope and coil hand locations
	Shipping Splits (if required)	See Note #9 below



NOTE: Drive hand and coil hand determined by facing the inlet section

Important Notes:

- 1) Actual fabrication release cannot commence until this form is **confirmed by the customer and returned to JCI**
- 2) The release process cannot commence until **written** release notification is issued by customer including **want date** and **ship to address**
- 3) Equipment "**lead-time**" **does not start** until confirmed release documentation is received
- 4) Modifications to equipment configurations after fabrication release may impact cost and lead-time
- 5) Attached configurations are as shown in the approved equipment submittals or as defined in superseding customer correspondence
- 6) AHU "Side" / "Hand" orientation is relative to a person standing inside an AHU with air hitting the back of the head. See drawing above.
- 7) Note that once this document is confirmed, the equipment configurations defined by this document take precedence over all other documents
- 8) "Want date" and/or "ship to address" changes made after this document is confirmed may impact cost and lead-time
- 9) The attached drawings also include shipping split explosions with corresponding weights and dimensions. If additional splits are required there will be additional cost and the unit length will increase.



BILL OF MATERIAL DATA

EQUIPMENT	Solution XTO
UNIT TAGS	AHU-1
QTY	1

Items Included

- Unit Options:
 - Standard Warranty is 18 months parts and labor from date of shipment or 12 months from startup, whichever occurs first.
- Vaporproof LED Lights will be provided in Mixing Box, Variable Length Access and Supply Fan segments, all wired to a single switch located on the supply fan segment.
- Supply Fan Segment
 - STD Ga. G-90 Galvanized Interior Liner STD Ga. Stainless Steel Floor Liner
 - Single EPFN Fan
 - Left Outward Swing Access Door provided
 - 460 Volt ODP Premium Efficiency Motor
 - Factory Mounted ABB VFD - Airmod AYK Fused in NEMA 3R Enclosure
- Mixing Box Segment
 - Left Outward Swing Access Door provided
 - Dampers
- Cooling Coil Segment
 - Left Outward Swing Access Door provided
 - IAQ Drain Pan with Stainless Steel Liner and No additional length
- Electric Heat Segment
 - Left Outward Swing Access Door provided
- Rigid Filter Segment
 - Left Outward Swing Access Door provided
- Access Segment
 - Left Outward Swing Access Door provided
- Discharge Plenum Segment
 - Left Inward Swing Access Door provided

Items Included but INSTALLED BY OTHERS

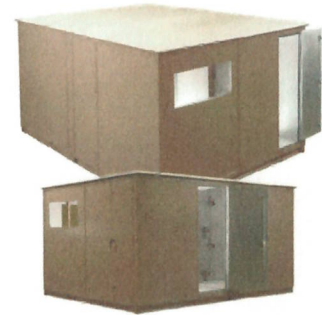
- RainHood

Items NOT Included

- Unit Startup is not included.
- Hauling/Rigging of Equipment is not included.

Job Summary

Project Name: 1hargroveMerckDanville
 Unit Tag(s): AHU-1
 Quantity: 1 Environment: Outdoor



Unit Overview

Model	Airflow (CFM)	Altitude (ft)	Operating Weight (lbs)
XTO-84x78	12,610	460	7,603

Segment Sequence

(DP FS CC XA-2 EH XA-1 RF MB)

Unit Construction

Casing Details						
Segment(s)	Thickness (in)	Exterior Paint	Exterior Gauge and Material	Interior Gauge and Material	Insulation Thickness and Material	Bulkhead Material
MB, RF, XA-1, EH, XA-2, FS, DP	2	STD Exterior Paint	STD Ga. G-90 Galvanized	STD Ga. G-90 Galvanized	2" Foam	Galvanized
CC	2	STD Exterior Paint	STD Ga. G-90 Galvanized	STD Ga. Stainless Steel	2" Foam	Stainless Steel

Base Details							
Segment(s)	Base		Floor				
	Material	Paint	Gauge and Material	Paint	Insulation	Attachment	Tread Plate
MB, RF, XA-1, EH, XA-2, CC, FS, DP	Standard Formed Steel	None	STD Ga. Stainless Steel	None	N/A	-	Aluminum Diamond Plate

Unit Electrical

Circuit Details					
Circuit #	Component(s)	V/Ph/Hz	Full Load Amps (FLA)	Minimum Current Ampacity (MCA)	Maximum Overcurrent Protection (MOP)
1	Supply Fan Motor Control	460/3/60	28.7	35.9	60.0
2	Electric Heat1 left Element	460 / 480/3/60	-	-	250.0
3	Lights and Outlets	120/1/60	-	-	15.0

Electrical Details			
Minimum Unit SCCR	5 kA rms Symmetrical	ETL Label (UL1995/NEC-2002)	
Unit Light Type	Vaporproof LED		Unit Light Switch
			External

Supply Fan(s)

Performance Details												
Fan Manufacturer	Model	Class	Size	% Wheel Width	% Wheel Diameter	Quantity	Total Airflow (CFM)	Altitude (ft)	TSP (in w.g)	ESP (in w.g)	Fan Speed (RPM)	Fan Power (BHP)
Twin City	EPFN	III	300	84	100	1	12,610	460	7.30	4.50	1,669	19.66
Drive Type	Wheel Type	Blade Type	Wheel Material	Base Material	Fan Flow Isolation	AirFlow Monitoring	Isolation Type	Total Efficiency (%)	Outlet Velocity (ft/s)	Max Speed (RPM)		
Direct Drive	SWSI	Airfoil	Aluminum	-	None	Yes (K=4945.21)	2" Spring	0.76	0	2,291		

Motor Details										
Type	Manufacturer	Motor Power (HP)	V/Ph/Hz	Quantity	Insulation Class	Motor Speed (RPM)	Frame Size	Full Load Amps (Amps)	Efficiency	Location
ODP	TECO	25.0	460/3/60	1	F	1,800	284	28.70	Premium	Direct Drive

At Motor Synchronous Details					
TSP (in w.g.)	Total Air Flow (CMF)	Fan Speed (RPM)	Motor Correction Factor(%)	Fan Power (BHP)	Total Efficiency (%)
7.30	12,610	1,669	93.6	19.66	0.76

DX Coil(s)

Performance Summary																
Coil	Fluid Type	Rows	Fin Spacing (FPI)	Circuits	TMBH	SMBH	EAT (°F)		LAT (°F)		Airflow (CFM)	FV (ft/min)	APD	SST	RPD	Alt. (ft)
							DB	WB	DB	WB						
CC	R-410a	8	11	58	1100	582	89.1	74.6	45.2	45.0	12,610	380	0.71	40.00	6.10	460

Construction Details

Coil	Location	Offset (in)	# of Distributors	Connection Material ³	Connection Rotation (degrees)	Connection Type	Suction Connection (Per Coil)	Coil Stack Rack

Coil Index ²	Connection							Qty	Size (in)
CC	0	Left	0	4	Copper	0	-	1	2-1/8

Coil	# of Coils High	Coil Split	Face Type	Total Fin Height (in)	Fin Length (in)	Coil Face Area (ft ²)	Fin Material	Fin Thickness (in)	Fin Type	Tube Diameter (in)	Tube Material	Tube Wall Thickness (in)
CC	2	55-45	Full	72.50	66	33.2	AL	.010	Corrugated	1/2	Copper	.016
Coil	Coil Coating			Dry Weight (lbs)	Fluid Weight (lbs)	Fluid Volume (ft ³)	Header Material	Casing Material	Intermediate Drain Pan Material			
CC	-			850	50	3.61	Copper	304 Stainless Steel	304 Stainless Steel			

Notes

- ¹Performance is shown for the entire coil bank. Performance is not per coil.
- ²Coil index indicates position in segment. Example: CC-1, index 0; Spacer, index 1; CC-2, index 2
- ³Johnson Controls suggests using red brass or copper connectors when the coil is to be attached to a copper or brass piping system.
- Ratings are for coils manufactured by Johnson Controls, Inc., 507 E. Michigan St., Milwaukee WI 53202.
- Coil DLL Version: 7.71
- BDx Tube Spacing: 1.25 x 1.08
- CC[1][0]: This coil is not certified by AHRI 410. This coil is rated in accordance with the AHRI Forced-Circulation Air-Cooling and Air-Heating Coils Certification program which is based on AHRI Standard 410. Certified units may be found in the AHRI Directory at www.ahridirectory.org.

Drain(s)

Details

Segment	Drain Pan		
	Liner Material	Connection Location	Liner Coating
CC	Stainless Steel	Left	None

Filter(s)

Details

Segment	Type	Depth	Filter Loading	Media/MERV	# of Spares	Spare Filter Media	Frame Material	
RF	Pre-Filter	4"	Side	Pleated 30% (MERV 8)	1	Pleated 30% (MERV 8)	Aluminum	
RF	Primary Filter	12" Rigid	Side	90-95% Eff, (MERV 14)	1	60-65% Eff, (MERV 11)	Aluminum	
Sizes						Filter Gauge Details		
Segment	Filter	1 st Filter Size H x W (in)	1 st Qty	2 nd Filter Size H x W (in)	2 nd Qty	Location	Type	Range (in w.g)
RF	Pre-Filter	24x24	6	24x20	3	Door	Minihelic	0 - 0.5
RF	Primary Filter	24x24	6	24x20	3	Door	Minihelic	0 - 0.5

Project Name:1hargroveMerckDanville
 Unit Folder:AH12610COPYRELEASE
 Unit Tag(s): AHU-1



Damper(s)

Details														
Segment	Air Path	H x W (in)	Qty	Total Face Velocity (ft/min)	Face Area	CFM	Minimum Allowable OA CFM	Damper Type	Damper Config	Model	Material	Blade Orientation	Actuator Type	Fail Position
MB	Outside Air	19.00 x 37.00		1,291		12,610		Control	100%	CD60	Galvanized	Parallel	-	-

Hood(s)

Details							
Segment	Air Path	Quantity	H x W (in)	Total Face Velocity (ft/min)	Airflow (CFM)	Moisture Eliminator	Bird Screen
MB	Outside Air	2	23.2500 x 41.7020	1,291	6,305	-	Yes

Door(s)

Details											
Segment(s)	Location	Swing	Hinge Location	H x W x T (in)	View Port	Test Port	Spare Gasket	Thermal Break	Safety Latch	Noncontact Safety Interlock	
MB	Left	Outward	Upstream Side	78 x 24 x 2	None	-	-	Yes	-	-	
RF	Left	Outward	Upstream Side	78 x 20 x 2	None	-	-	Yes	-	-	
XA-1, XA-2	Left	Outward	Upstream Side	78 x 21 x 2	None	-	-	Yes	-	-	
EH	Left	Outward	Upstream Side	78 x 36 x 2	None	-	-	Yes	-	-	
CC	Left	Outward	Downstream Side	78 x 18 x 2	None	-	-	Yes	-	-	
FS	Left	Outward	Upstream Side	78 x 24 x 2	None	-	-	Yes	Yes	-	
DP	Left	Inward	Upstream Side	78 x 18 x 2	None	-	-	Yes	-	-	

Electric Heat

Details												
Qty	Element Type	Voltage (V)	Amperage Draw	KW	KW Rating Method	EAT (°F)	LAT (°F)	Stages	Control Voltage	Min CFM Required		
1	Open	460 / 480	225.92	180	Standard KW Rating	5.00	50.58	None	24 VAC	10,477		
Pilot Lights		Control Panel Mounting			Control Interlocks				Protective Screen	Heater Control Type		
None		Standard			Differential Pressure Switch and Dry Contact Interlock				Both	SCR Vernier Controller		
Disconnect Switch		Supply Fusing		NEMA Rating		Contactor Options		Control Panel Options		Control Panel Handling		
Non Fused		Less than 48 amps		NEMA 1		Magnetic Disconnecting		0-10 VDC		Left		

Motor Control(s)

Details										
Segment	Type	MMP	V/Ph/Hz	Input/Output Amps*	Efficiency	Heat Loss (at 100% load)	Enclosure	Bypass	Disconnect Type	RFI/EMI EMC Filter
FS	ABB VFD - Airmod AYK ABB AYK580	-	460/3/60	34.0/34.0	94 %	525	NEMA 3R	-	Fused	Yes

Details										
Segment	Type	MMP	V/Ph/Hz	Input/Output Amps*	Efficiency	Heat Loss (at 100% load)	Enclosure	Bypass	Disconnect Type	RFI/EMI EMC Filter

Notes

*Drives are rated for use below 3,000 ft and 104°F. Use Derating Charts in Air-Mod Engineering Guide Form 100.42-EGI (212) for use above these limits.

Storage Temperature: -40°F to 158°F

Humidity: MAX 95% RH non-condensing

Altitude: 3,300 ft. without derate (1% derate for each additional 330 ft.)

Overload Current Rating: 100% for 1 minute every 10 minutes.

The Class 10 trip rating of the MMP device will not withstand an across-the-line start of a fan and should not be used with VFDs with bypass circuits.

The customer must provide a platform or catwalk for accessing the power-disconnect.

Copper Conductors Only.

FS: Contains the following option: Swinging DC Line Choke (Equivalent to 5% Input Line Reactor)

Face Velocity and Static Pressure

Summary							
Segment	Description	Face Area (sq. ft)	Airflow (CFM)	Face Velocity (ft/min)	Supply Fan Static Pressure (in w.g.)	Exhaust/Return Fan Static Pressure (in w.g.)	
MB	Standard Hood	9.8	12,610	0.00	0.07	0.00	
MB	Bird Screen	9.8	12,610	0.00	0.10	0.00	
MB	Opening	9.8	12,610	1,291.00	0.28	0.00	
MB	Control Galvanized (CD60)	0.0	12,610	0.00	0.03	0.00	
RF	4" Pleated 30% (MERV 8)	34.0	12,610	371.00	0.15	0.00	
RF	Dirty Filter Allowance - Prefilter	0.0	12,610	0.00	0.00	0.00	
RF	12" Rigid 90-95% Eff, (MERV 14)	34.0	12,610	371.00	0.37	0.00	
EH	Electric Heater	0.0	12,610	0.00	0.02	0.00	
CC	Cooling 8 rows 11 fins	33.2	12,610	380.00	0.71	0.00	
FS	Cabinet Effect	0.0	12,610	0.00	0.43	0.00	
FS	External Static - User Entered	0.0	12,610	0.00	4.50	0.00	
DP	Opening	7.0	12,610	1,794.00	0.64	0.00	
Total					7.30	0.00	

Dimensions and Weight

Details					
Segment	Description	Length ¹ (in)	Width ² (in)	Height (in)	Weight (lbs)
MB	Mixing Box	30	78	84	820
RF	High Efficiency Filter	23	78	84	467
XA-1	Variable Length Access	27	78	84	398
EH	Electric Heat	39	78	84	982
XA-2	Variable Length Access	22	78	84	324
CC	Variable Length Cooling Coil	38	78	84	1,602
FS	Supply Fan	61	78	84	2,295
DP	Discharge Plenum	32	78	84	715
Overall³		272			7,603

Notes

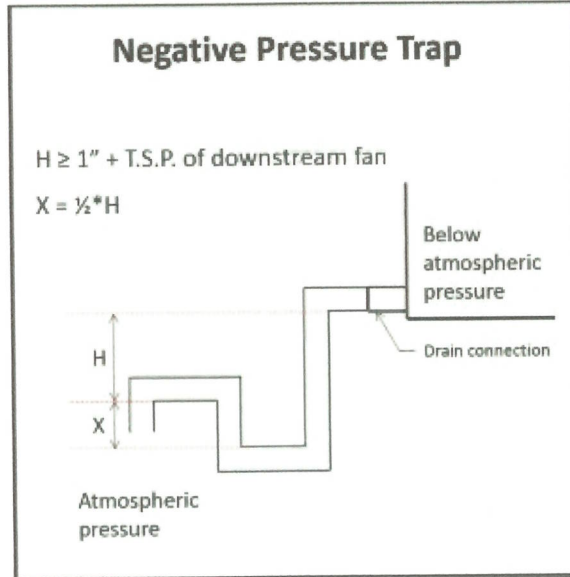
¹The length includes bottom tier segments only

²The width does not include coil connection extensions or door latches that extend beyond the unit casing. The width does not include the depth of any pipe chases.

³Unit level and other loose components may be excluded from segment weights and overall segment weights. For total unit weight reference Unit Overview.

Recommended Trap Height

Details									
Segment	Applicable Fan	Fan TSP (in w.g.)	Positive or Negative	Calculated Dimensions (in)			Recommended Dimensions (in)		Base Rail Height (in)
				H	X	H + X	H	H + X	
CC	Supply Fan	7.30	Negative	8.30	4.15	12.45	8.50	12.75	6"



Notes

Formulas and calculations are recommendations only. Contractor shall determine actual dimensions required for each trap based on jobsite conditions, and application requirements.
 Refer to the Installation Manual of the IOM for more information.

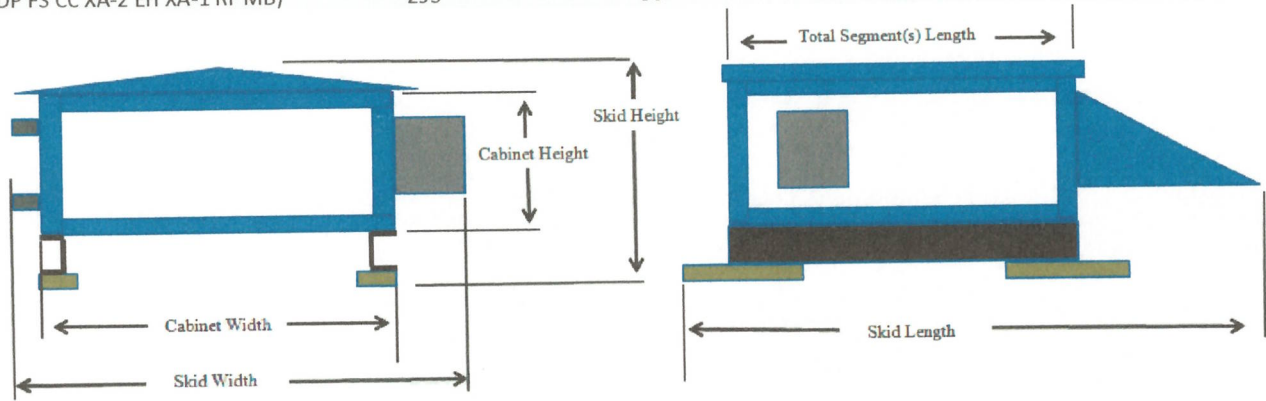
Statement of Compliance

Details

YORK® Solution XT AHU's meet IBC seismic requirements for non-critical equipment ($I_p = 1.0$) for locations with design spectral response $S_{ds} \leq 0.43$. Units must be rigid mounted.
 The anchorage of the unit to the ground or building structure needs to be evaluated by and is the responsibility of the engineer of record.
 Specification of seismic requirements is the responsibility of the project design engineer. If formal certification is required, please contact your sales representative and/or application engineer for review. Certain application and site requirements may require additional cost and/or lead time.
 Component locations are listed as Segment Hand (Unit Hand): ex. Left (Right). See SubmittalDrawing for additional details
 Air handling unit parameters vary depending on conditions. Parameters such as airflows, air pressure drops, and coil capacities are shown for design conditions.

Shipping Summary

Details				
Skid	Skid Length (in)	Skid Height (in)	Skid Width (in)	Skid Weight (lbs)
(DP FS CC XA-2 EH XA-1 RF MB)	293	96	94	7,602



Notes

- Skid Width: Total width of the shipping skid, including any items that may extend beyond the cabinet (this includes any door handles, coil connections, drain connections, lifting lugs, mounted pipe-chases, electrical/control components, tie-down brackets, side dampers).
- Skid Height: Total height of the shipping skid, including any items that may extend beyond the cabinet (this includes any base-rails, shipping wood-blocks, roof peak, discharge flanges, mounted gas-furnace flue pipes).
- Skid Length: Total length of the shipping skid, including any items that may extend beyond the cabinet (this includes any mounted rain-hoods, discharge flanges, tie-down brackets, shipping wood-blocks, front dampers, split connectors, electrical/control components, outrigging extensions, isolation dampers, inlet baskets).

Fan Curves Section

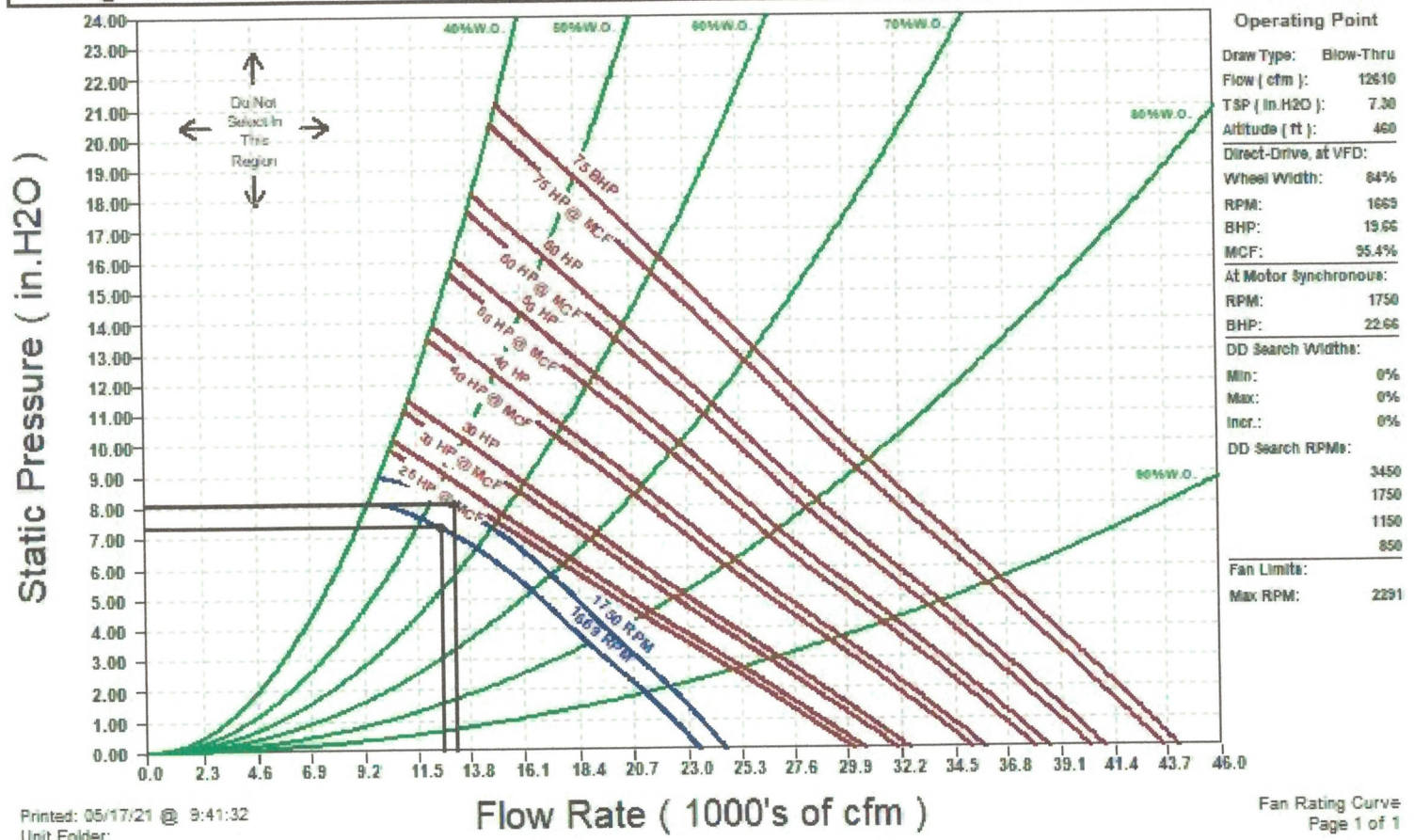
Product Type: Solution XTO

Unit Tags: AHU-1



Solution XT Fan Rating Curve

Project Name	Unit Tag	Qty	Model	Seg	Fan Type	Class	Size
1hargroveMerckDanville	AHU-1	1	XTO-84x78	FS	PL-EPFN	III	300

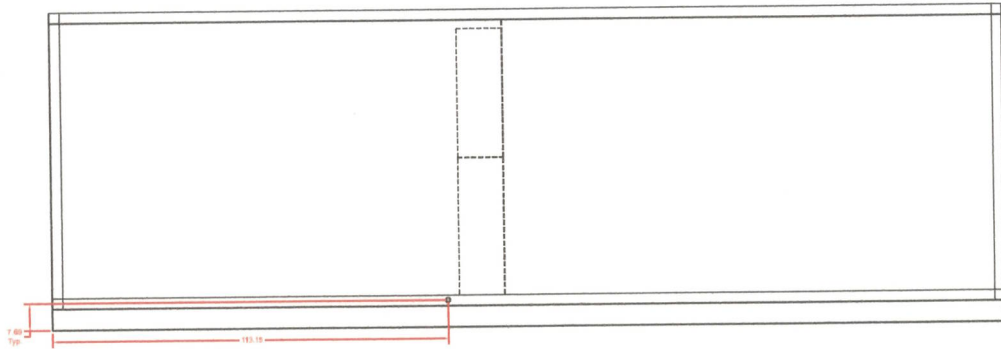


Printed: 05/17/21 @ 9:41:32
Unit Folder:

Unit and Wiring Drawings Section

Product Type: Solution XTO

Unit Tags: AHU-1



Coil Connections

UNIT CONSTRUCTION
 Model: SolutionXTO-84x75 Construction: Outdoor
 Meter Location: Right
 Unit Weight: 7,822 lbs. (4-1/2")
 PLAN VIEW
 (See page 2 for details)

NOTES
 Units with a terminal and a filter opening. Unit connections flush with the bottom of unit, not flush with bottom of base rail.
 Refer to performance report for shipping unit details.
 Allow additional space around the unit for removing the access panels and replace parts of the unit. A minimum clearance equal to the width of the unit must be provided on one side of the unit for removing the coil in the assembly.
 Manufacturer responsible for penetration and accommodations of all electrical boxes and internal coil connections.
 COIL CONNECTIONS SECTION FOR MANAGER: Note: provide and install, make electrical and/or battery packages control boxes, coil connections, rack banks, pipe cranes, AMCA air dampers/ADRs, Inverter (if applicable.) Note: it is the responsibility of the user to meet requirements for the unit.
 Certain items may extend beyond cabinet dimensions including: door handles, light switches, electrical boxes, wiring units, and coil systems, etc.
 The overall coil length includes an additional 1/4" per shipping unit due to additional gasketing and coil connection hardware.
 (See dimension table in 1/2" Page 2-7)

COIL CONNECTIONS
 (In order of Airflow)

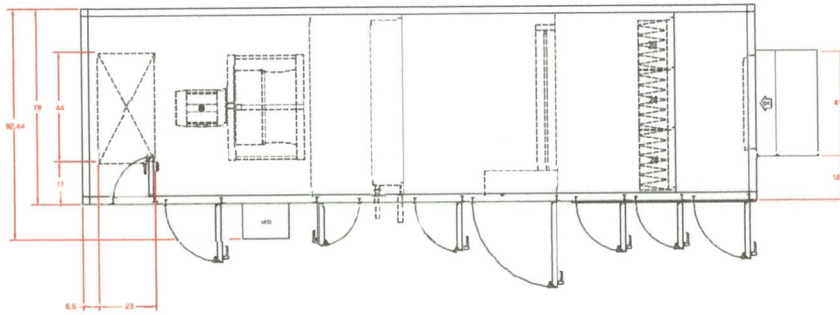
Serial	Unit	Length	Width	Height
CC	Serial	1.00" 2.00"	1.50"	2.50"
CC	Serial	1.00" 2.00"	1.50"	2.50"

Draw part connection size 1/4" MPT SCH 40 (Connections on Left Side of unit)

SECTION LIST

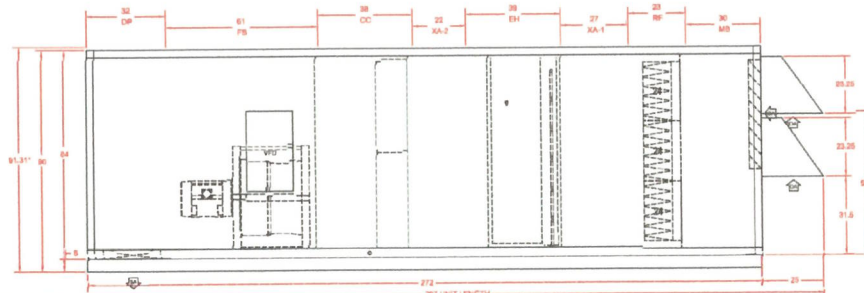
SYMBOL	DESCRIPTION
HE	Heating Element
FF	High Efficiency Filter
DA-1	Variable Length Access
DA	Electric Heat
VA-2	Variable Length Access
CC	Coiling Coil
FF	Supply Fan - DIRECT
DF	Discharge Flange

PRODUCT DRAWING SOLUTION XT COIL CONNECTION DETAIL MODEL: SolutionXTO-44x75 NOT FOR CONSTRUCTION	Project Name: 1haigroveMerckDanville Location: Engineer: Contractor: For:	Sold To: Cust. Purch. Order#: Contract#: UNIT: TAG: AHU-1 - Sheet 2	Date: 5/17/2021 9:32:25 Version: Form No.: Dwg. Lev.: 5/03 Dwg. Scale: NTS	Serial Number: SQ Database Number: YORKworks Release: Dwg. Name: Dwg. Location:	
	YORKworks Version: 21.6.12 Drawing Database Version: 16.00.01334				



TOP DISCHARGE WILL HAVE TO BE CUT IN THE FIELD

PLAN VIEW



*NOTE MAX HEIGHT TO PEAK OF SLOPED ROOF

ELEVATION VIEW

UNIT CONSTRUCTION
 Model: 806000-XTQ-8475 Construction: Outdoor
 Motor Location: Right
 Unit Weight: 7,332 lbs. (+/- 10%)
 PLAN SHEET
 Back (Supply) / Front (Return) / Discharge

NOTES
 Units with a base(s) and a bottom opening. Exist. connections flush with the bottom of unit, not flush with bottom of base(s).
 Refer to performance report for shipping split details. Allow sufficient space around the unit for removing the access panels and remove parts of the unit. A minimum clearance equal to the width of the unit must be provided on one side of the unit for removing the coil fan assembly.
 Contractor responsible for penetrations and connections of all electrical boxes and internal coil connections.
 Overall dimensions account for outdoor roof peak and overhang, motor control and factory package control boxes, coil connections, rain hoods, pipe chases, AHU-48 dampers/SMR, base(s) (if applicable) base(s) in order to comply the base space requirements for the unit.
 Curtain Rains may extend beyond cabinet dimensions including door handles, light switches, electrical boxes, etc. (including pipe and connection etc.).
 The overall unit length includes an additional 1/4" per shipping split due to additional gasketing and split connection hardware.
 Dimension Reference: See the 3D Model to 11
 3/15/2021 Update: See the 3D Model to 11

PPF/RV CONNECTIONS
 (in Order of Airflow)

Split	Size	Cond.	Supply	Return	Notes	
CC	Supply	1 1/2"	2 Dia	2 Dia	1.39"	2.18"
CC	Supply	1 1/2"	2 Dia	2 Dia	1.39"	2.18"

DRASH PAN CONNECTIONS
 (in Order of Airflow)

Split	Size	Cond.	Supply	Return	Notes	
CC	Supply	1 1/2"	2 Dia	2 Dia	1.39"	2.18"
CC	Supply	1 1/2"	2 Dia	2 Dia	1.39"	2.18"

Drash pan connection size 1 1/2" MPT SCH 40 (Connections on Left Side of Unit)

SECTION LIST

ITEM	DESCRIPTION
DR	Drain Pan
HF	High Efficiency Filter
JA-1	Variable Length Access
EL	Electric Panel
JA-2	Variable Length Access
CC	Coil and Coil
IS	Insulation
DP	Drain Pan Flange

PRODUCT DRAWING
 SOLUTION XT AIR HANDLING UNIT DETAIL
 MODEL: 806000-XTQ-84x78
NOT FOR CONSTRUCTION

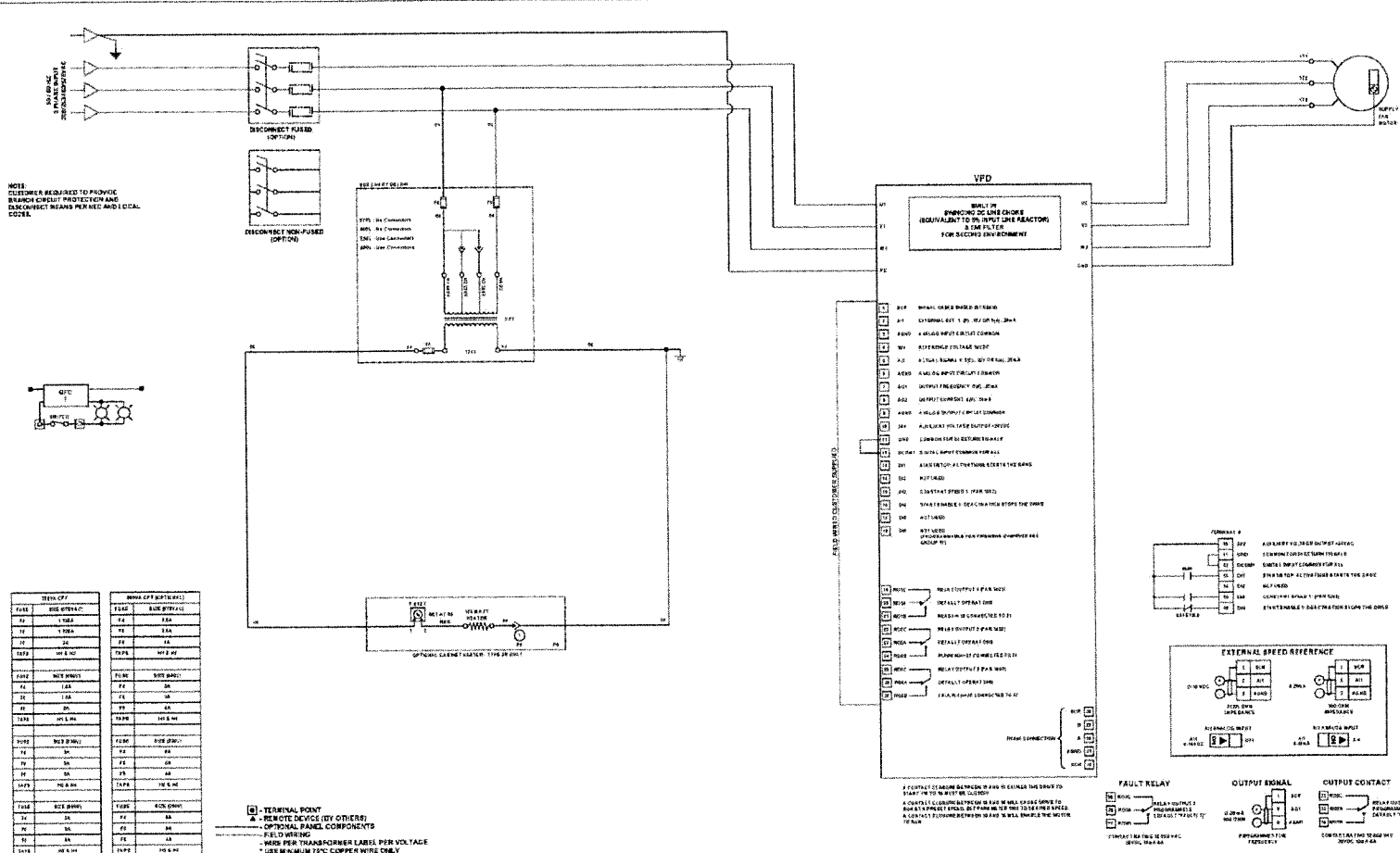
Project Name: 1hargroveMerckDanville
 Location:
 Engineer:
 Contractor:
 For:

Sold To:
 Cust/Purch Order#:
 Contract#:
 UNIT TAG: AHU-1 - Sheet 1

Date: 5/17/2021 9:32:25
 Version:
 Form No.:
 Dwg. Linc.: 5/03
 Dwg. Scale: NTS

Serial Number:
 SO Database Number:
 YORKworks Release:
 Dwg. Name:
 Dwg. Location:





NOTE: CUSTOMER REQUIRED TO PROVIDE SURGE CURRENT PROTECTION AND DISCONNECT FUSED AND I.C.C.A. CODE.

TERMINAL POINT		REMOTE DEVICE (BY OTHERS)	
F411	110V AC	F412	110V AC
F413	110V AC	F414	110V AC
F415	110V AC	F416	110V AC
F417	110V AC	F418	110V AC
F419	110V AC	F420	110V AC
F421	110V AC	F422	110V AC
F423	110V AC	F424	110V AC
F425	110V AC	F426	110V AC
F427	110V AC	F428	110V AC
F429	110V AC	F430	110V AC
F431	110V AC	F432	110V AC
F433	110V AC	F434	110V AC
F435	110V AC	F436	110V AC
F437	110V AC	F438	110V AC
F439	110V AC	F440	110V AC
F441	110V AC	F442	110V AC
F443	110V AC	F444	110V AC
F445	110V AC	F446	110V AC
F447	110V AC	F448	110V AC
F449	110V AC	F450	110V AC
F451	110V AC	F452	110V AC
F453	110V AC	F454	110V AC
F455	110V AC	F456	110V AC
F457	110V AC	F458	110V AC
F459	110V AC	F460	110V AC
F461	110V AC	F462	110V AC
F463	110V AC	F464	110V AC
F465	110V AC	F466	110V AC
F467	110V AC	F468	110V AC
F469	110V AC	F470	110V AC
F471	110V AC	F472	110V AC
F473	110V AC	F474	110V AC
F475	110V AC	F476	110V AC
F477	110V AC	F478	110V AC
F479	110V AC	F480	110V AC
F481	110V AC	F482	110V AC
F483	110V AC	F484	110V AC
F485	110V AC	F486	110V AC
F487	110V AC	F488	110V AC
F489	110V AC	F490	110V AC
F491	110V AC	F492	110V AC
F493	110V AC	F494	110V AC
F495	110V AC	F496	110V AC
F497	110V AC	F498	110V AC
F499	110V AC	F500	110V AC

□ TERMINAL POINT
 ▲ REMOTE DEVICE (BY OTHERS)
 ○ OPTIONAL PANEL COMPONENTS
 - FIELD WIRING
 * WIRE PER TRANSFORMER LABEL PER VOLTAGE
 * USE MINIMUM 10°C COPPER WIRE ONLY

PRODUCT DRAWING
 SOLUTION XT AIR HANDLING UNIT
 MODEL Unit Wiring
 NOT FOR CONSTRUCTION

Project Name: ThegroveMarckDanville
 Location:
 Engineer:
 Contractor:
 For:

Sold To:
 Cust. Purch. Order#:
 Contract#:
 UNIT: AHU-1
 TAG:

Date: 5/17/2021 9:32:25
 Rev. Date:
 Form No.:
 Dwg. Lev.: 03/09
 Dwg. Scale: 1:1

Serial Number:
 SQ Database Number:
 Software Release:
 Dwg. Name:
 Dwg. Location:

Johnson Controls

MAIN TERMINAL BLOCK

SUPPLY
FAN MOTOR
CONTROL #1

ELECTRIC HEAT

SERVICE
LIGHTS / OUTLETS

SUPPLY
FAN MOTOR
#1

PRODUCT DRAWING

SOLUTION XT AIR HANDLING UNIT
MODEL Unit Wiring

NOT FOR CONSTRUCTION

Project Name: ThargoveMerckDenville
Location:
Engineer:
Contractor:
For:

Sold To:
Client Purch Order:
Contract #:
UNIT: AHU-1
TAG:

Date: 5/17/2021 9:32:25
Rev. Date:
Form No.:
Dwg. Lev.: 03/08
Dwg. Scale: NTS

Serial Number:
SQ Database Number:
Software Release:
Dwg. Name:
Dwg. Location:

