	ENGINEERING INFORMATION CR Title: OPTIMIZED AGM BIG BAG HANGER	EI No: 155EIM1005293 Issue Date: 04/15/2014 Revision: R00 Revision Date: MM/DD/20YY

1. **Scope Details** (Areas affected, Sub-module in question):

FEATURE	3rd Level FLN	Base Feature Version	Safety	Mechanical	Pneumatic	P&C Hardware	P&C Software	Midrange/CBA	Miscellaneous	Recipe File	Stop List
Feature Name	155	03.00		X							

2. **CR Kit Assembly or DRV Number:**

Parts to be ordered:

Qty.	Order/Dwg. #	Ref. BOM	MMR	Description / Title	Vendor
1	VP-AZO-1-047925-R00	PA-3637691	50068853	TRAVERSE ASY, BIG BAG STATION, 800X800	AZO GMBH

3. **Reference CR's:**

- a) List of CR(s) that need to get installed first: **N/A**
- b) List of CR(s) that need to be installed in conjunction with this CR (e.g. to minimize construction effort): **N/A**
- c) Changes to software have been integrated starting with the following software file names: **N/A**

4. Pre-Work Before Line Shut Down:

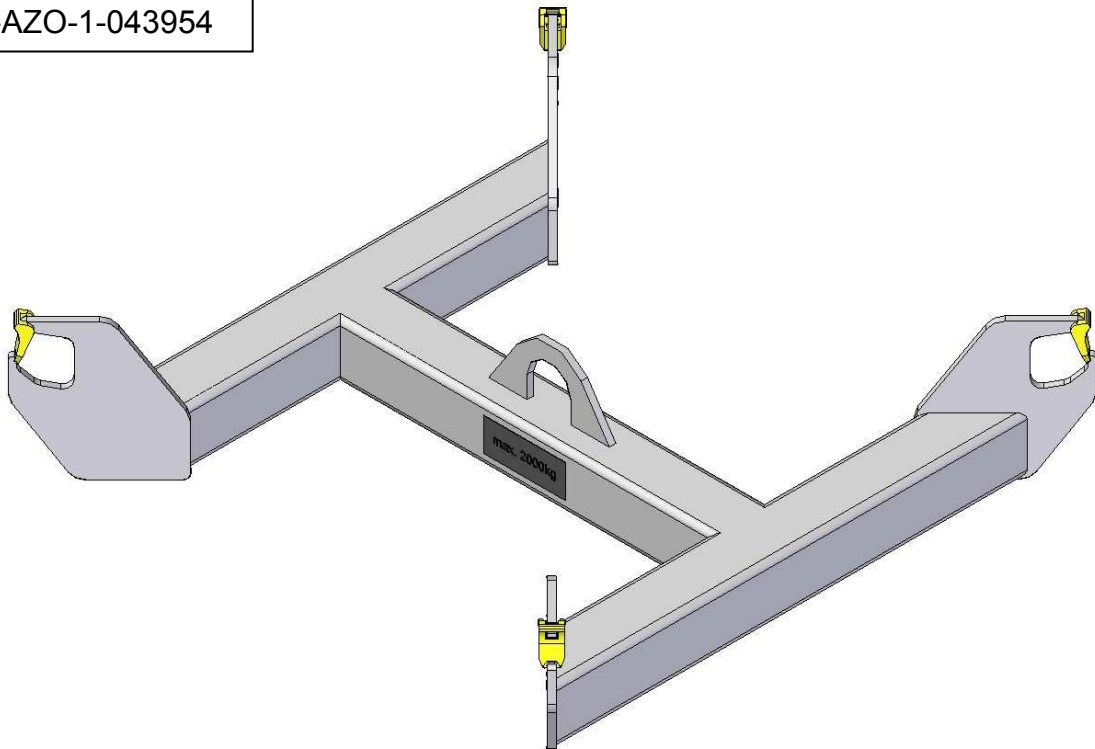
- a. Materials: **N/A**
- b. Resources: **N/A**
- c. Special Tools: **N/A**
- d. Safety Considerations: **ENSURE THAT ALL RELEVANT SAFETY PRECAUTIONS WILL BE CONSIDERED BEFORE CONSTRUCTION!**
- e. Electrical: **N/A**

5. Site Clearance Efforts:

Affected Area: FEATURE 155.

REMOVE BIG BAG STATION **TRAVERSE** ASSEMBLY ACCORDING TO PICTURE BELOW:

VP-AZO-1-043954



DISCARD COMPLETE EQUIPMENT!



ENGINEERING INFORMATION

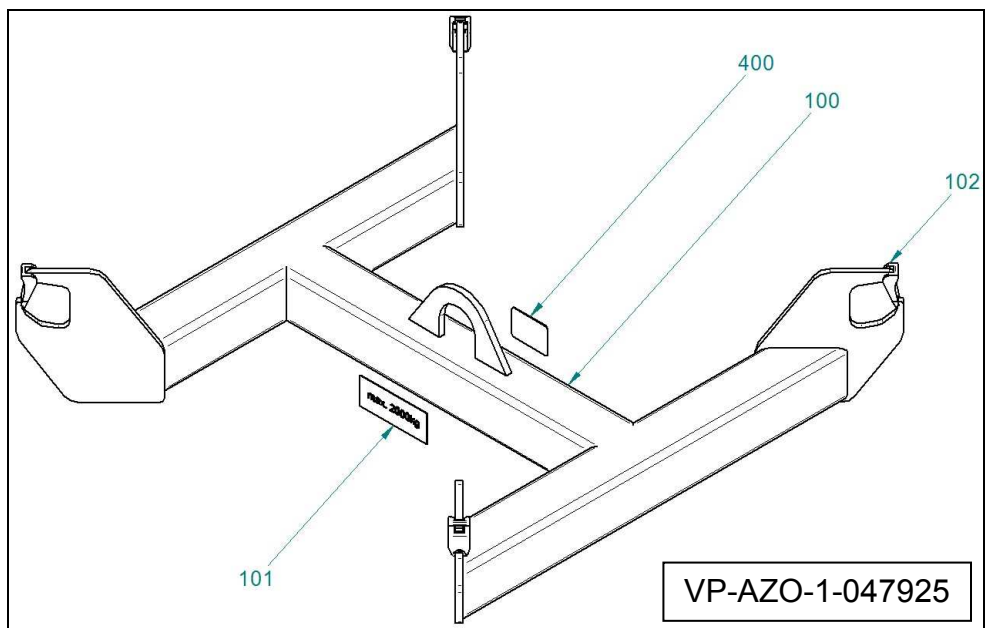
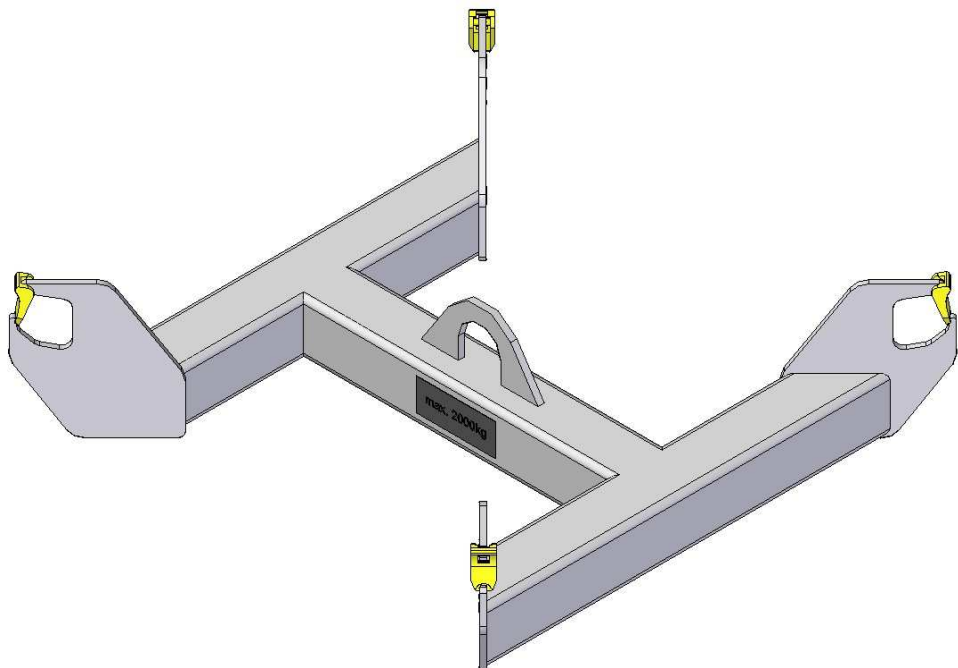
CR Title: OPTIMIZED AGM BIG BAG HANGER




EI No: 155EIM1005293
Issue Date: 04/15/2014
Revision: R00
Revision Date:
MM/DD/20YY

Installation Procedure:

- a. Installation will be managed by: *List "Plant" or "Project" Resources as appropriate*
- b. **INSTALL BIG BAG STATION TRAVERSE ASSEMBLY ACCORDING TO PICTURES BELOW IN REVERSE ORDER!**

SEE VP-AZO-1-047925 FOR REFERENCE:



  	ENGINEERING INFORMATION CR Title: OPTIMIZED AGM BIG BAG HANGER	EI No: 155EIM1005293 Issue Date: 04/15/2014 Revision: R00 Revision Date: MM/DD/20YY
---	---	--

6. **Software PSI:** **N/A**

7. **Midrange Set-up:** **N/A**

ORIGINATOR:

Martin Frotscher / 04/15/2014

(Date)

APPROVED BY:

Bernd Spessart / MM/DD/2014

(Printed)

(Project manager/Date)

(Eng. responsible/Date)

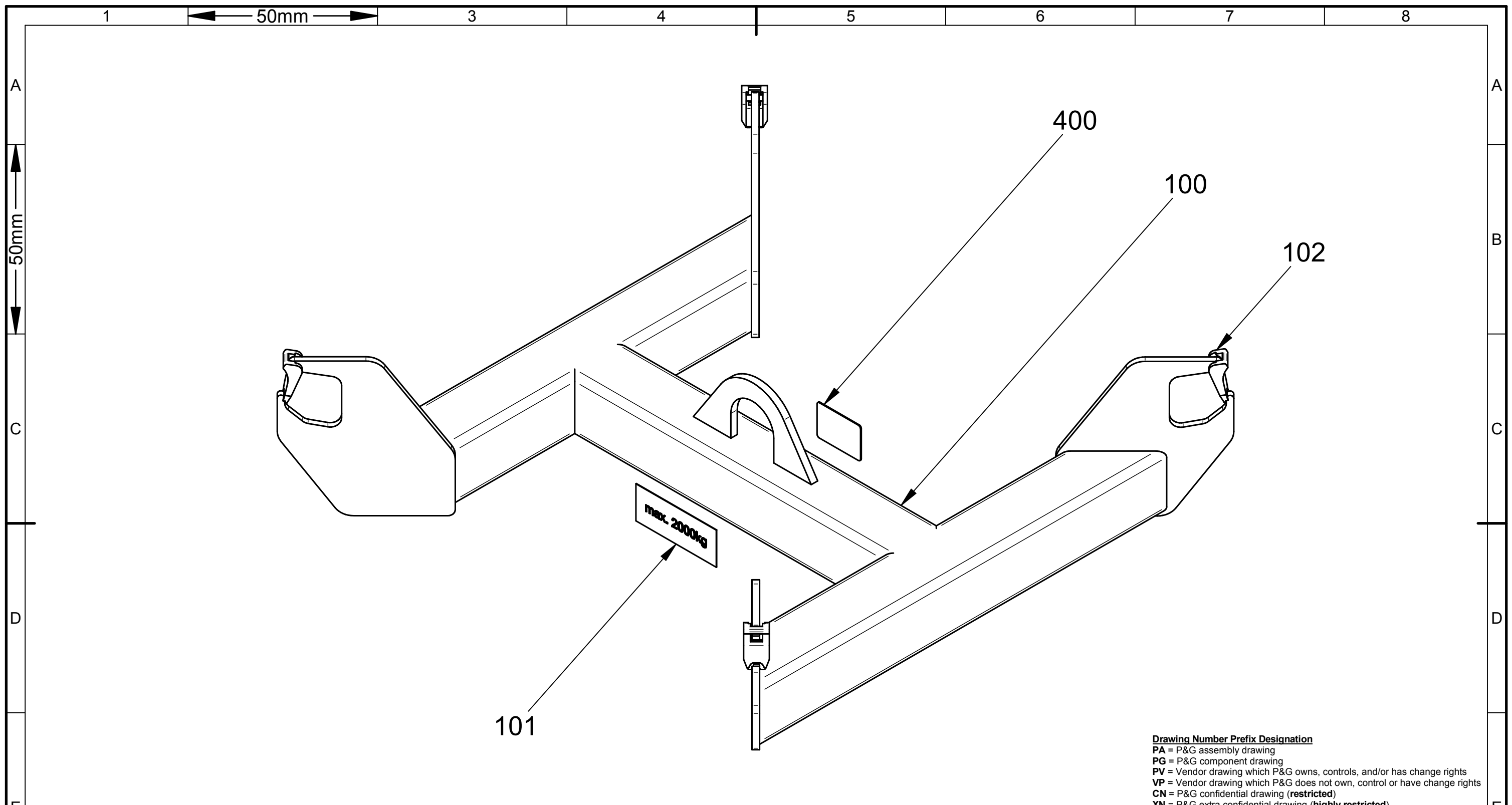
(Manuf. Responsible/Date)

EI Revision History:

Revision.	Change Description	Name / Date

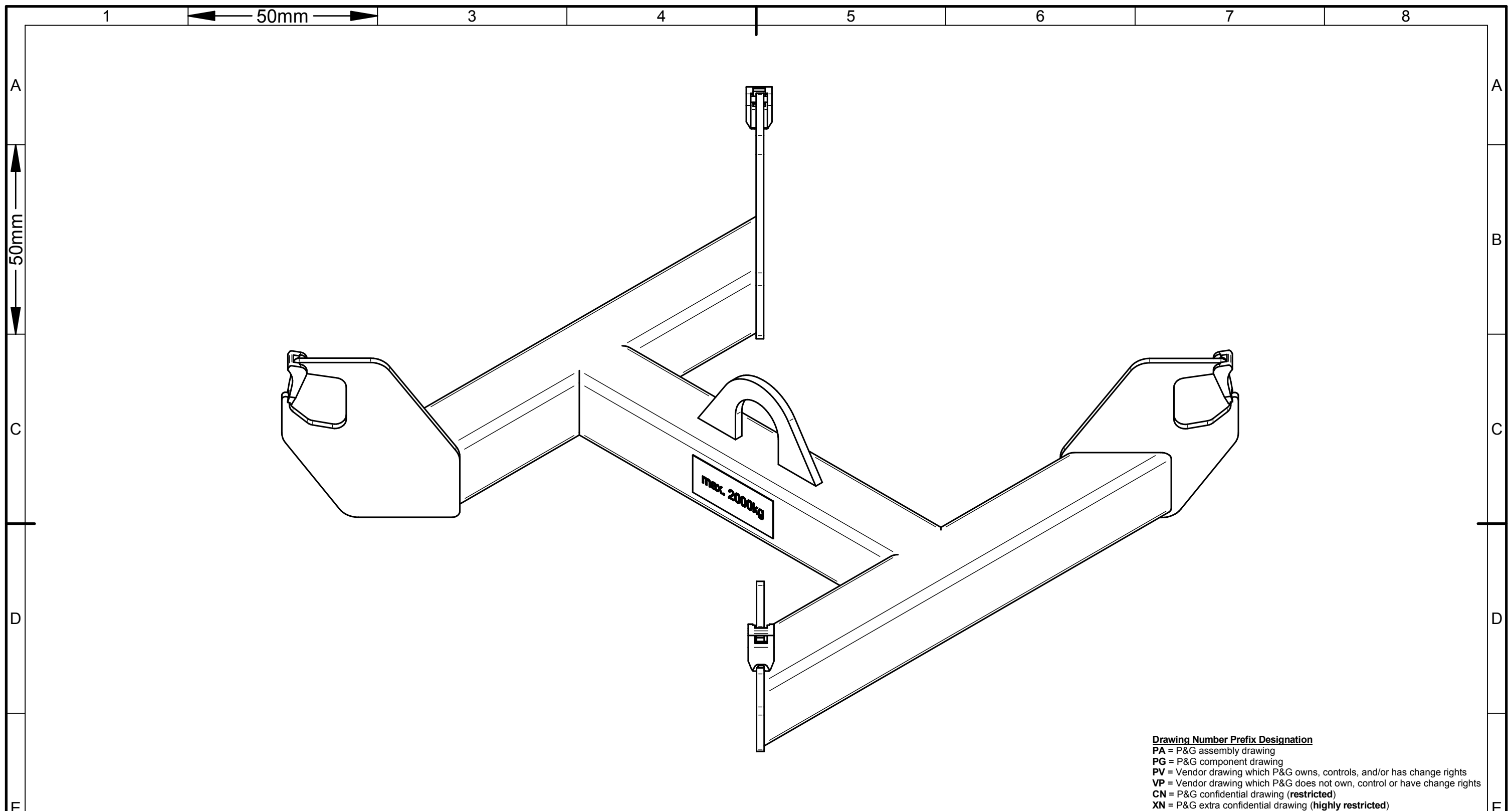
Attachments:

Ref. BOM/Location	Dwg.#, BOM# or Page#	Rev.	Title	Superseded Dwg.#, BOM# or Page#	Rev.
n/a	VP-AZO-1-047925	R00	TRAVERSE ASY, BIG BAG STATION, 800X800	n/a	n/a



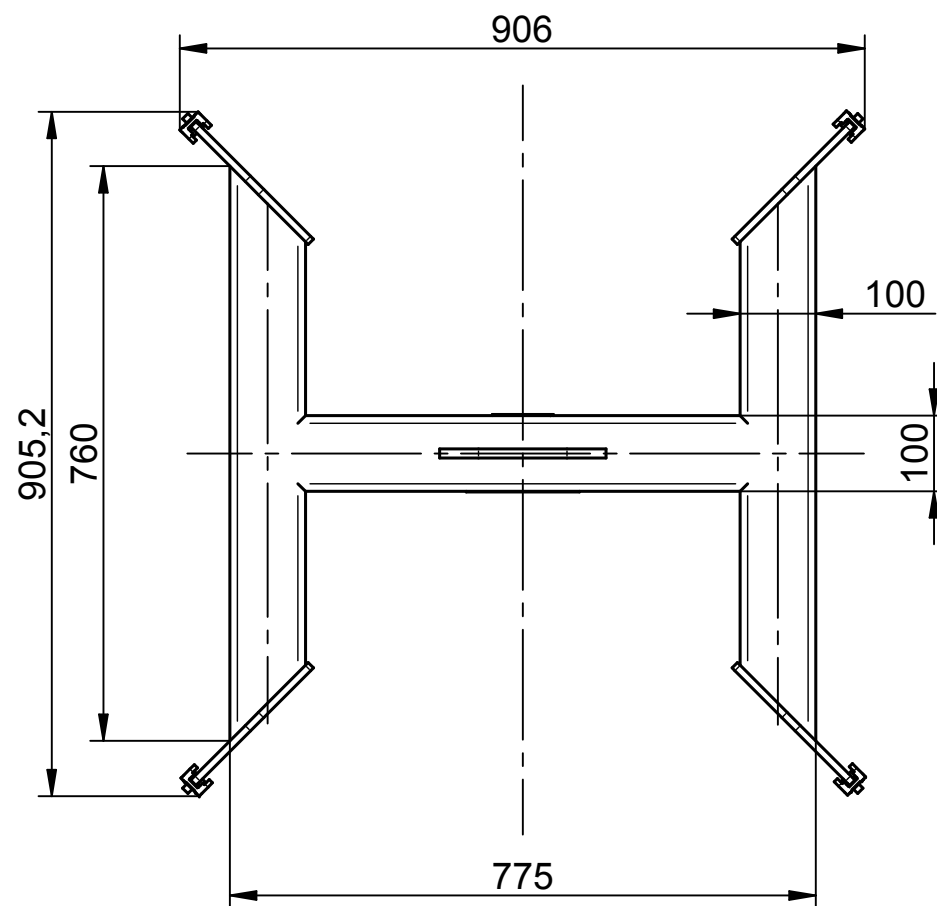
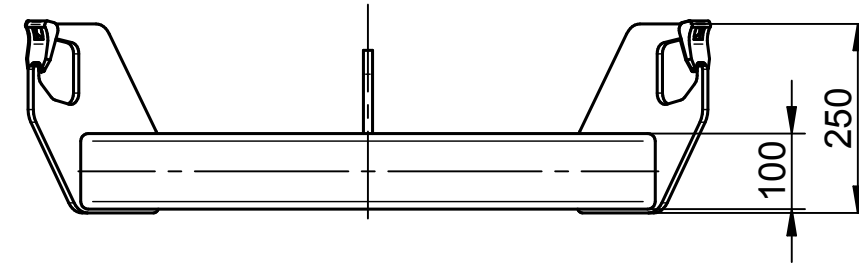
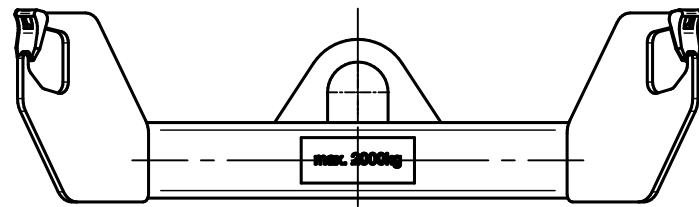
Drawing Number Prefix Designation
 PA = P&G assembly drawing
 PG = P&G component drawing
 PV = Vendor drawing which P&G owns, controls, and/or has change rights
 VP = Vendor drawing which P&G does not own, control or have change rights
 CN = P&G confidential drawing (restricted)
 XN = P&G extra confidential drawing (highly restricted)

	Material	Weight in kg	41.2		Last 5 Changes			<i>Property of Procter & Gamble - Important - This Drawing Print is loaned for mutual assistance and as such is subject to recall at any time. Information contained hereon is not to be disclosed or reproduced in any form for the benefit of parties other than necessary subcontractors and suppliers without written consent of Procter & Gamble.</i>	Presentation	Assembly	Scale	1:5
	Assembly				No	Explanation Summary	Name / Date		CAD System	SolidEdge	Drawing Size	A3
Stock Size								Design Site	FROTSCHER.M.1_EBP	Title		
Unless Otherwise Specified All Dimensions in Millimeters (mm), Thread Standard ISO 261 applies. Break All Sharp Corners. Surface Finish According To ISO 1302.								MMR No.	30530247	TRAVERSE ASY, BIG BAG STATION, 800X800		
Default Tolerances								Check		BG TRAVERSE		
Length	± 0.1	± 0.2	± 0.3	± 0.5	± 0.8	± 1.2	± 2	Approv		VP-AZO-1-047925-R00		
Radius/Chamfer	± 0.2	± 0.5	± 1				Lead Designer	SPESSART.B	Drawing Number			
Angle	± 1	± 0.5	± 0.3	± 0.2	± 0.1		Project Owner	SPESSART.B	3 Shts			
From	0.5	3	6	30	120	400	1000	2000	Project	Printed By		
Up To	3	6	30	120	400	1000	2000	4000	10EU004-W1	Print Date		
Applicable Range of Length, Radius, or Angle				For full explanations and changes see database				Ref Number				
										© 2001		



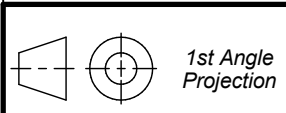
Drawing Number Prefix Designation
 PA = P&G assembly drawing
 PG = P&G component drawing
 PV = Vendor drawing which P&G owns, controls, and/or has change rights
 VP = Vendor drawing which P&G does not own, control or have change rights
 CN = P&G confidential drawing (restricted)
 XN = P&G extra confidential drawing (highly restricted)

	Material	Weight in kg		41.2		Last 5 Changes			<i>Property of Procter & Gamble - Important - This Drawing Print is loaned for mutual assistance and as such is subject to recall at any time. Information contained hereon is not to be disclosed or reproduced in any form for the benefit of parties other than necessary subcontractors and suppliers without written consent of Procter & Gamble.</i>	Presentation	Assembly	Scale	1:5
	Stock Size		No		Explanation Summary		Name / Date			CAD System	SolidEdge	Drawing Size	A3
Unless Otherwise Specified All Dimensions in Millimeters (mm), Thread Standard ISO 261 applies. Break All Sharp Corners. Surface Finish According To ISO 1302.													
Default Tolerances													
Length	± 0.1	± 0.2	± 0.3	± 0.5	± 0.8	± 1.2	± 2						
Radius/Chamfer	± 0.2	± 0.5	± 1										
Angle	± 1	± 0.5	± 0.3	± 0.2	± 0.1								
From	0.5	3	6	30	120	400	1000	2000					
Up To	3	6	30	120	400	1000	2000	4000					
Applicable Range of Length, Radius, or Angle									For full explanations and changes see database				
Procter & Gamble © 2011										Drawing Number VP-AZO-1-047925-R00		Sht 2 3 Shts	



Drawing Number Prefix Designation

- PA = P&G assembly drawing
- PG = P&G component drawing
- PV = Vendor drawing which P&G owns, controls, and/or has change rights
- VP = Vendor drawing which P&G does not own, control or have change rights
- CN = P&G confidential drawing (restricted)
- XN = P&G extra confidential drawing (highly restricted)



1st Angle Projection

Material: **Assembly**
 Weight in kg: **41.2**
 Stock Size:

Last 5 Changes

No	Explanation Summary	Name / Date

Property of Procter & Gamble - Important - This Drawing Print is loaned for mutual assistance and as such is subject to recall at any time. Information contained hereon is not to be disclosed or reproduced in any form for the benefit of parties other than necessary subcontractors and suppliers without written consent of Procter & Gamble.

Design Site	2014-MAY-21	FROTSCHER.M.1_EBP
MMR No.	30530247	
Drawn		
Check		
Approv		
Lead Designer	SPESSART.B	
Derived From	SPESSART.B	
Project Owner	SPESSART.B	
Replaces	10EU004-W1	
Project		
Printed By		
Print Date		
Ref Number		

Presentation	Assembly	Scale	1:5
CAD System	SolidEdge	Drawing Size	A3

Title
TRAVERSE ASY, BIG BAG STATION, 800X800
BG TRAVERSE

Unless Otherwise Specified All Dimensions in Millimeters (mm), Thread Standard ISO 261 applies. Break All Sharp Corners. Surface Finish According To ISO 1302.

Default Tolerances								
Length	± 0.1	± 0.2	± 0.3	± 0.5	± 0.8	± 1.2	± 2	
Radius/Chamfer	± 0.2	± 0.5	± 1					
Angle	± 1	± 0.5	± 0.3	± 0.2	± 0.1			
From	0.5	3	6	30	120	400	1000	2000
Up To	3	6	30	120	400	1000	2000	4000

Procter & Gamble
 © 2001

Drawing Number
VP-AZO-1-047925-R00
 Sht **3**
 3 Shts

1 50mm 3 4 5 6 7 8

A 50mm

C

D

E

F

A

C

D

E

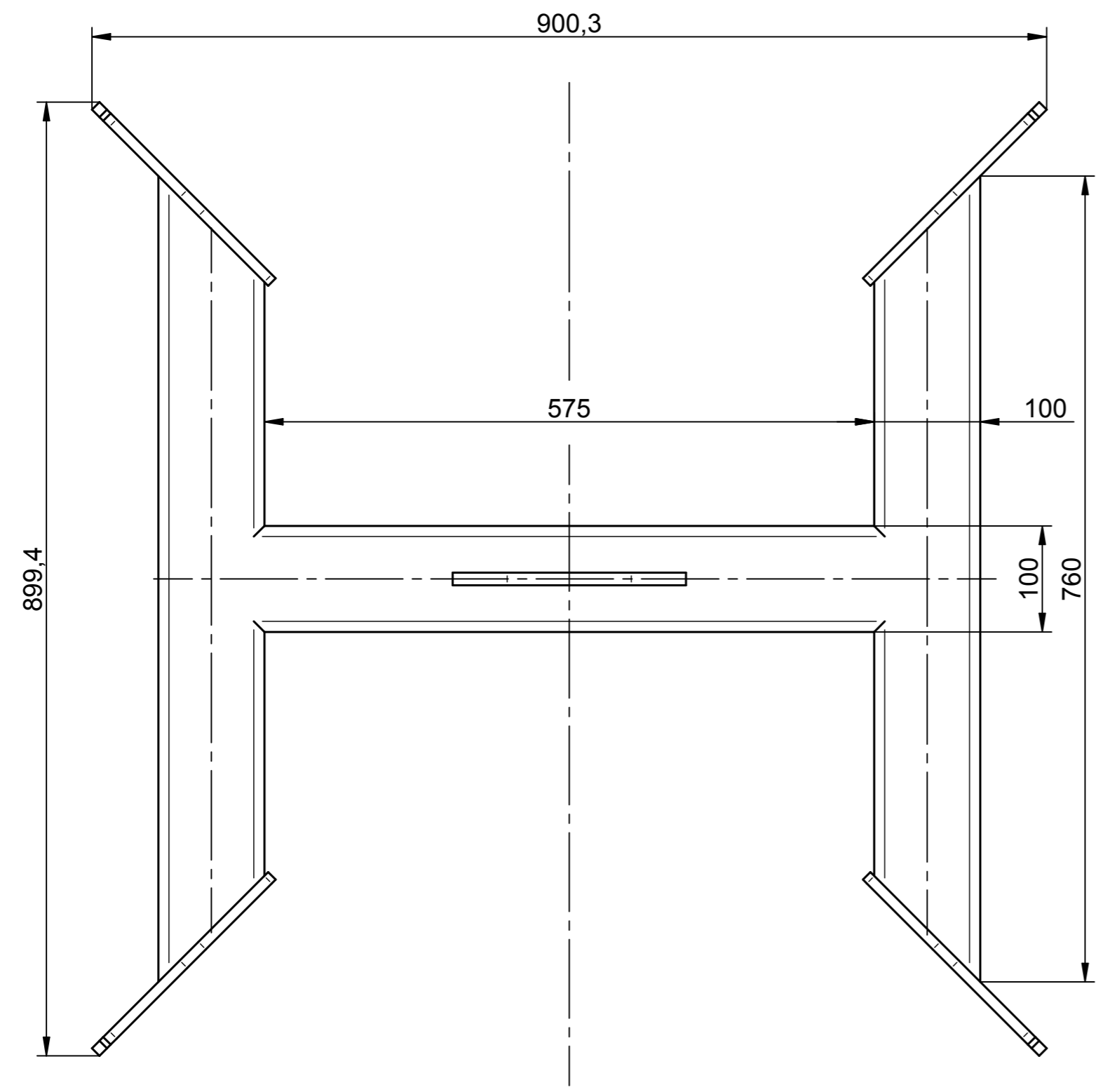
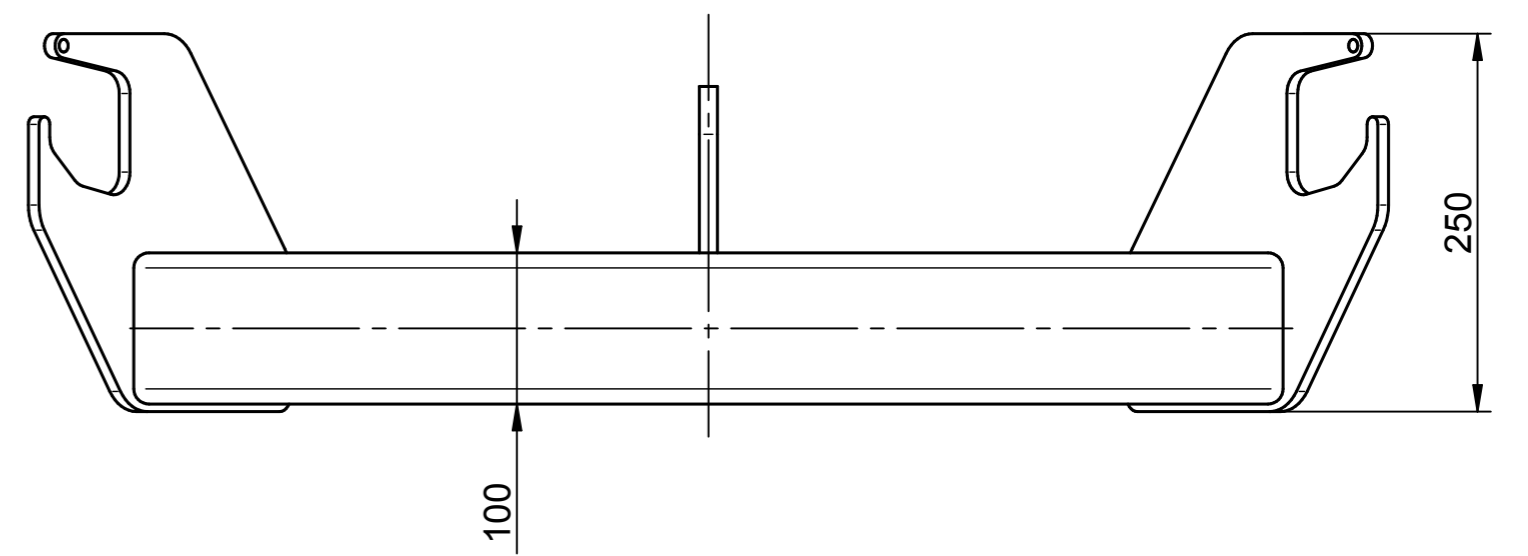
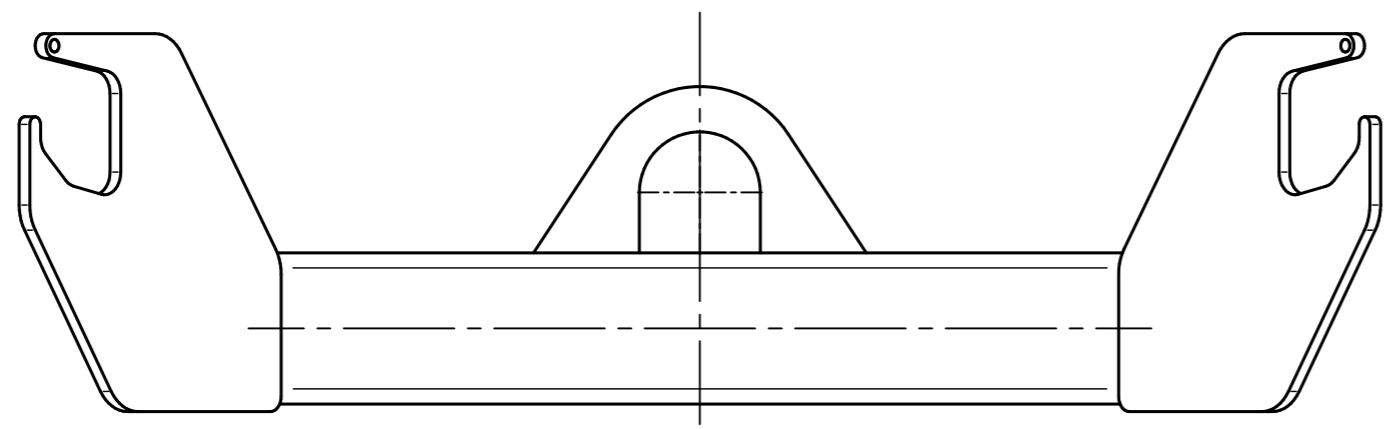
F

1 2 3 4 5 6 7 8

For full explanations and changes see database

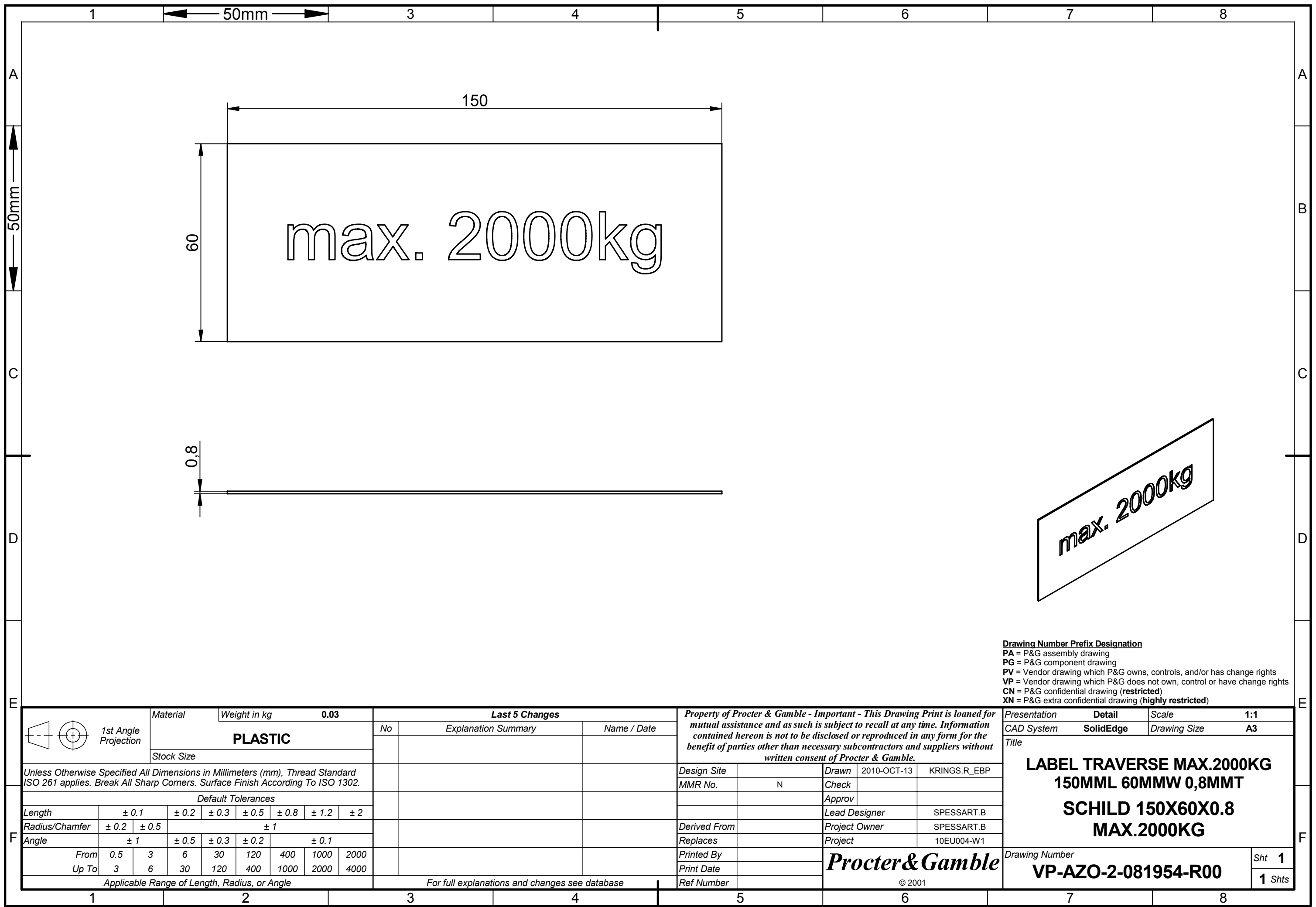
Applicable Range of Length, Radius, or Angle

Design Site		Drawn	2014-MAY-21	FROTSCHER.M.1_EBP	
MMR No.	30530247	Check			
		Approv			
		Lead Designer	SPESSART.B		
Derived From		Project Owner	SPESSART.B		
Replaces		Project	10EU004-W1		
Printed By		Procter & Gamble © 2001			
Print Date					
Ref Number					
Drawing Number	BM-AZO-1-047925-R00				Title
Confidentiality:				Spare Code Recomm.	
Item	P&G Number MMR Number	Qty	Unit	Partname	
100	VP-AZO-1-047926-R00 30530248	1	ea	TRAVERSE, BIG BAG, 2000KG 900MML 899MMW 250MMH TRAVERSE 50068854	C
101	VP-AZO-2-081954-R00 30125576	1	ea	LABEL TRAVERSE MAX.2000KG 150MML 60MMW 0,8MMT SCHILD 150X60X0.8 MAX.2000KG	C
102	VP-AZO-3-032355-R00 30126700	4	ea	SET SAFETY 65,5MML 34MMW 27MMH SICHERUNGS-SET FUER VCGH-10	C
400	2512909 39370163	1	ea	LABEL, PLAIN TYPENSCHILD, UNBEDRUCKT PART NO. 3-025800; 81X57, AZO GMBH, OSTERBURKEN	C



Drawing Number Prefix Designation
 PA = P&G assembly drawing
 PG = P&G component drawing
 PV = Vendor drawing which P&G owns, controls, and/or has change rights
 VP = Vendor drawing which P&G does not own, control or have change rights
 CN = P&G confidential drawing (restricted)
 XN = P&G extra confidential drawing (highly restricted)

 1st Angle Projection	Material	Weight in kg	40.6	Last 5 Changes		<i>Property of Procter & Gamble - Important - This Drawing Print is loaned for mutual assistance and as such is subject to recall at any time. Information contained hereon is not to be disclosed or reproduced in any form for the benefit of parties other than necessary subcontractors and suppliers without written consent of Procter & Gamble.</i>	Presentation	Detail	Scale	1:5	
	Composite Commercial			No	Explanation Summary		Name / Date	CAD System	SolidEdge	Drawing Size	A2
Unless Otherwise Specified All Dimensions in Millimeters (mm), Thread Standard ISO 261 applies. Break All Sharp Corners. Surface Finish According To ISO 1302.						Design Site	Drawn	2014-MAY-21	FROTSCHER.M.1_EBP		
Default Tolerances						MMR No.	30530248	Check			
Length	± 0.1	± 0.2	± 0.3	± 0.5	± 0.8	± 1.2	± 2	Approv			
Radius/Chamfer	± 0.2	± 0.5		± 1				Lead Designer	SPESSART.B		
Angle	± 1	± 0.5	± 0.3	± 0.2	± 0.1		Project Owner		SPESSART.B		
From	0.5	3	6	30	120	400	1000	2000	Project	10EU004-W1	
Up To	3	6	30	120	400	1000	2000	4000			
Applicable Range of Length, Radius, or Angle				For full explanations and changes see database		Printed By			Drawing Number VP-AZO-1-047926-R00		Sht 1
						Print Date			© 2001		1 Shts
						Ref Number					



max. 2000kg

Drawing Number Prefix Designation
 PA = P&G assembly drawing
 PG = P&G component drawing
 PV = Vendor drawing which P&G owns, controls, and/or has change rights
 VP = Vendor drawing which P&G does not own, control or have change rights
 CN = P&G confidential drawing (restricted)
 XN = P&G extra confidential drawing (highly restricted)

 1st Angle Projection	Material	Weight in kg	0.03		Last 5 Changes			<i>Property of Procter & Gamble - Important - This Drawing Print is loaned for mutual assistance and as such is subject to recall at any time. Information contained hereon is not to be disclosed or reproduced in any form for the benefit of parties other than necessary subcontractors and suppliers without written consent of Procter & Gamble.</i>	Presentation	Detail	Scale	1:1
	PLASTIC		No	Explanation Summary	Name / Date	CAD System	SolidEdge		Drawing Size	A3		
Stock Size								Title				
Unless Otherwise Specified All Dimensions in Millimeters (mm), Thread Standard ISO 261 applies. Break All Sharp Corners. Surface Finish According To ISO 1302.								LABEL TRAVERSE MAX.2000KG 150MML 60MMW 0,8MMT SCHILD 150X60X0.8 MAX.2000KG				
Default Tolerances												
Length	± 0.1	± 0.2	± 0.3	± 0.5	± 0.8	± 1.2	± 2	Design Site	Drawn	2010-OCT-13	KRINGS_R_EBP	
Radius/Chamfer	± 0.2	± 0.5	± 1					MMR No.	N	Check		
Angle	± 1	± 0.5	± 0.3	± 0.2	± 0.1			Approv				
From	0.5	3	6	30	120	400	1000	2000	Lead Designer	SPESSART.B		
Up To	3	6	30	120	400	1000	2000	4000	Project Owner	SPESSART.B		
Applicable Range of Length, Radius, or Angle								Derived From				
								Replaces				
								Project	10EU004-W1			
								Printed By	Procter & Gamble © 2001			
								Print Date				
								Ref Number				
								Drawing Number		VP-AZO-2-081954-R00		
								Sht		1		
								1 Shts				

1 50mm 3 4 5 6 7 8

A

50mm

C

D

E

F

A

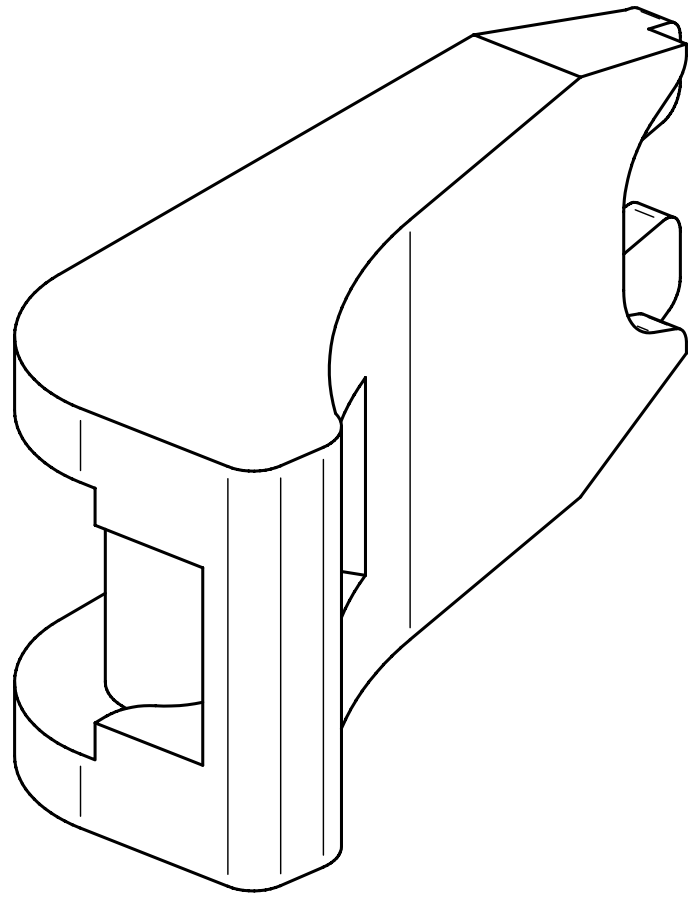
B

C

D

E

F



Drawing Number Prefix Designation
 PA = P&G assembly drawing
 PG = P&G component drawing
 PV = Vendor drawing which P&G owns, controls, and/or has change rights
 VP = Vendor drawing which P&G does not own, control or have change rights
 CN = P&G confidential drawing (restricted)
 XN = P&G extra confidential drawing (highly restricted)

<p>1st Angle Projection</p>	Material	Weight in kg	Last 5 Changes			Property of Procter & Gamble - Important - This Drawing Print is loaned for mutual assistance and as such is subject to recall at any time. Information contained hereon is not to be disclosed or reproduced in any form for the benefit of parties other than necessary subcontractors and suppliers without written consent of Procter & Gamble.			Presentation	Detail	Scale	2:1	
	Composite Commercial		No	Explanation Summary	Name / Date				CAD System	SolidEdge	Drawing Size	A3	
Stock Size								Title					
Unless Otherwise Specified All Dimensions in Millimeters (mm), Thread Standard ISO 261 applies. Break All Sharp Corners. Surface Finish According To ISO 1302.								SET SAFETY 65,5MML 34MMW 27MMH SICHERUNGS-SET FUER VCGH-10					
Default Tolerances								Design Site MMR No. Drawn Check Approved Lead Designer Project Owner Project					
Length	± 0.1	± 0.2	± 0.3	± 0.5	± 0.8	± 1.2	± 2	Derived From Replaces Printed By Print Date Ref Number					
Radius/Chamfer	± 0.2	± 0.5	± 1						Procter & Gamble © 2001				
Angle	± 1	± 0.5	± 0.3	± 0.2	± 0.1			Drawing Number VP-AZO-3-032355-R00					
From	0.5	3	6	30	120	400	1000	2000	Sht 1				
Up To	3	6	30	120	400	1000	2000	4000	1 Shts				
Applicable Range of Length, Radius, or Angle		For full explanations and changes see database											

1 2 3 4 5 6 7 8