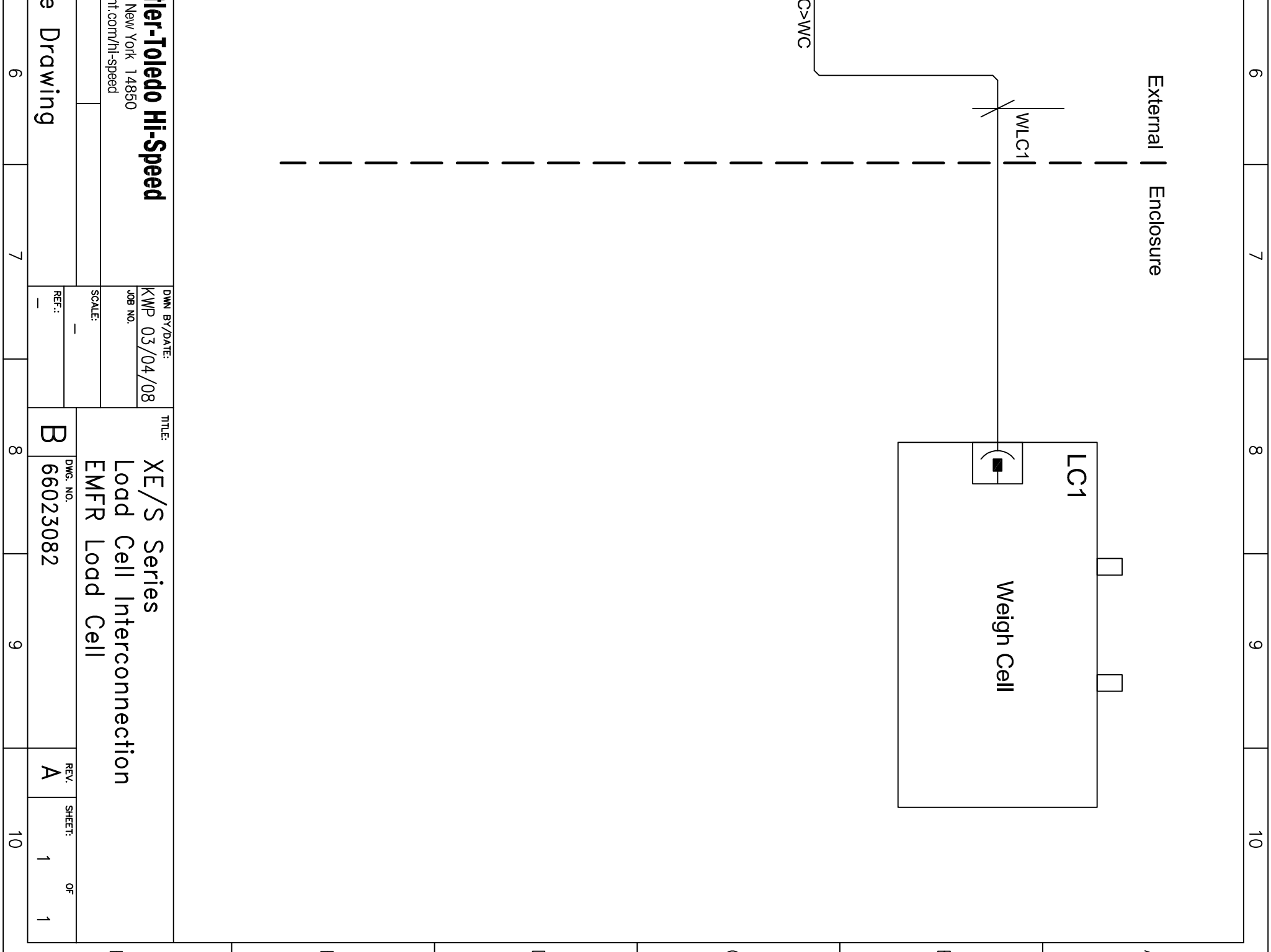
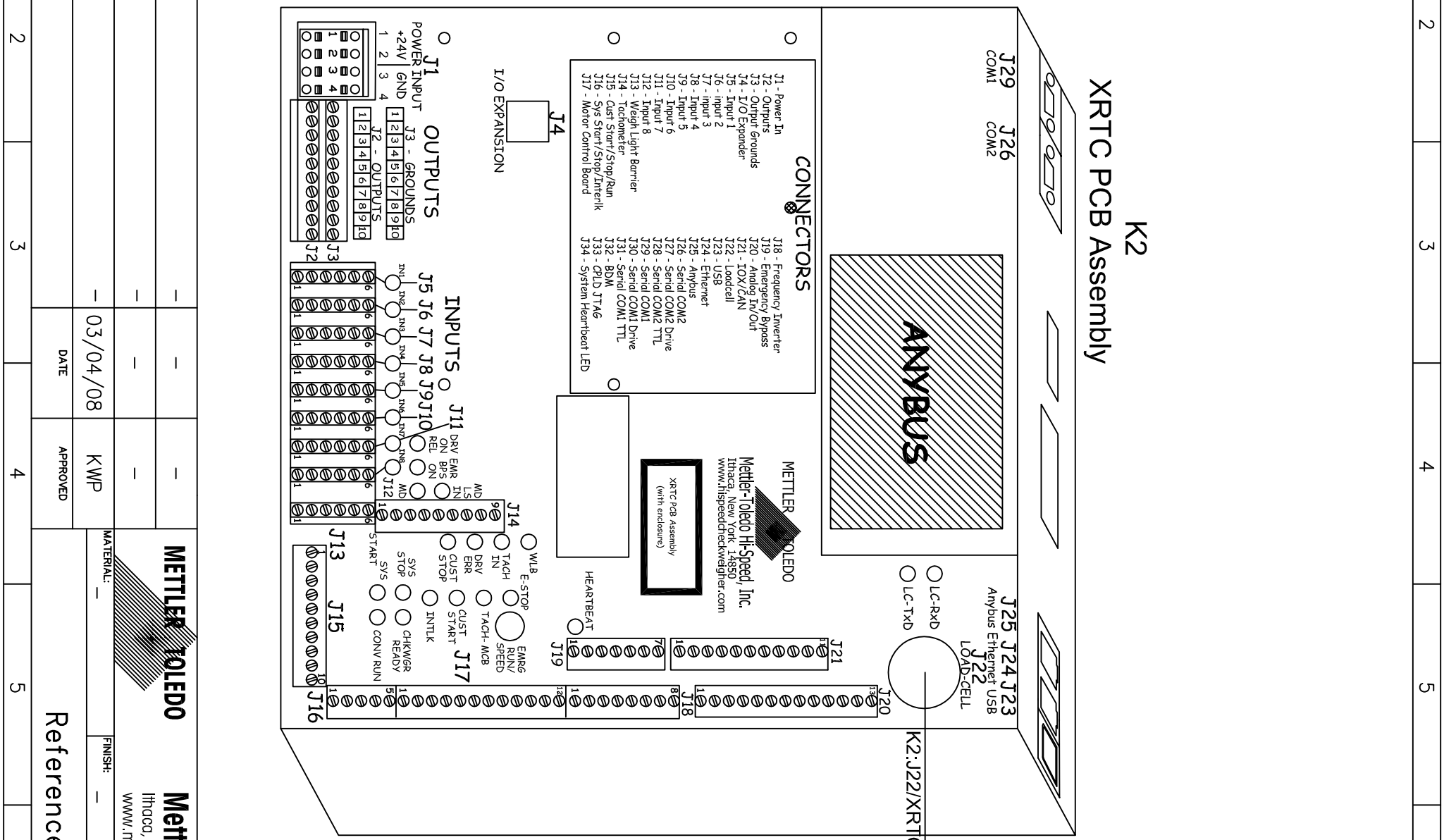


REV.	A	DESCRIPTION	DATE	APPROVED					
1	ORIGINAL		03/04/08	KWP					



REV.	A	DESCRIPTION	DATE	APPROVED					
1	ORIGINAL		03/04/08	KWP					

METTLER TOLEDO

Mettler-Toledo Hi-Speed

Itasca, New York 14850
www.mt.com/hi-speed

Reference Drawing

External Enclosure

WLC1

K2:J22/XRTC>WC

LC1

Weigh Cell

DMN BY/DATE:
KWP 03/04/08

TITLE:
XE/S Series
Load Cell Interconnection
EMFR Load Cell

DWG. NO.:
66023082

REV.:
A

SHEET:
1 OF 1