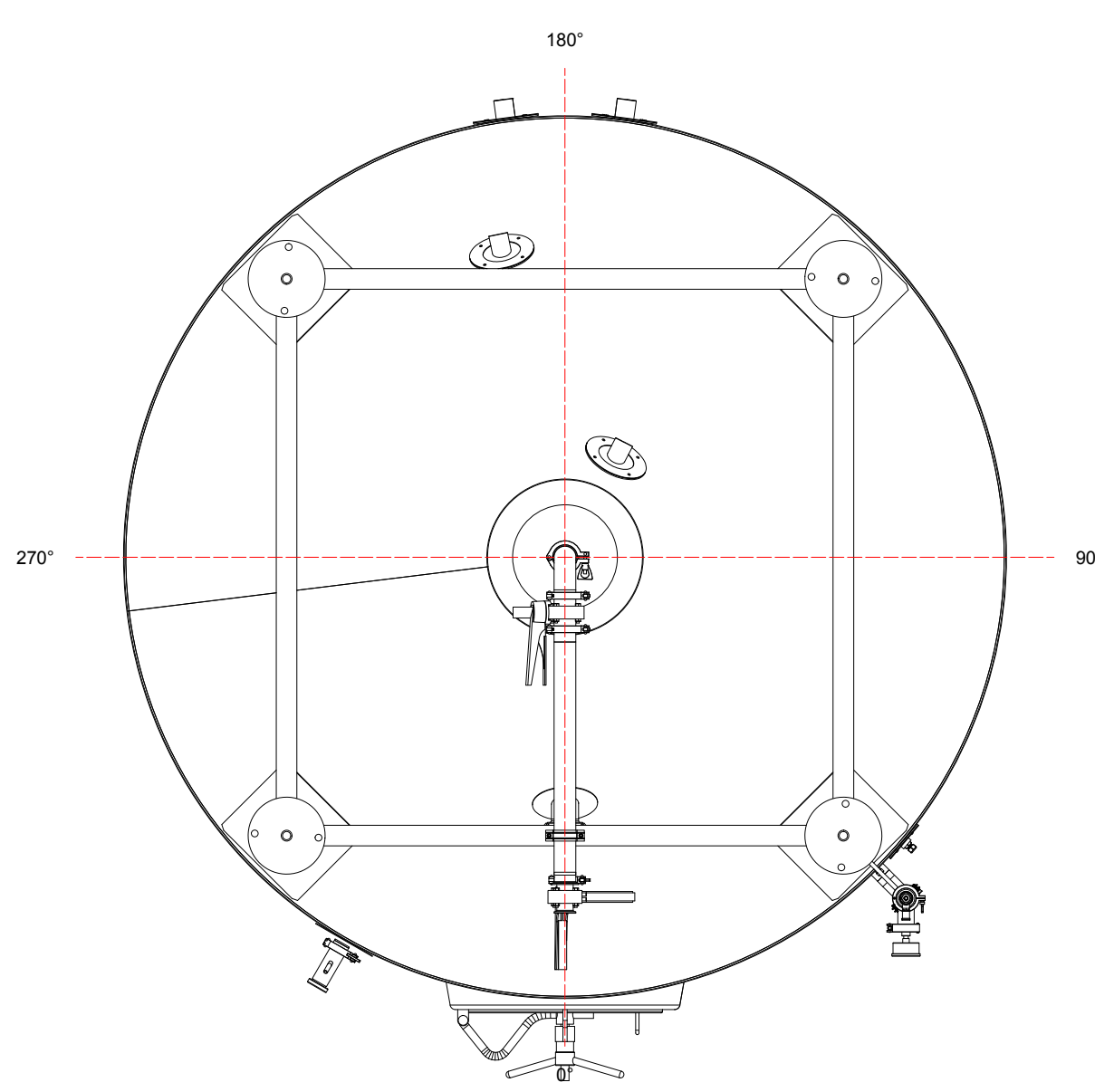
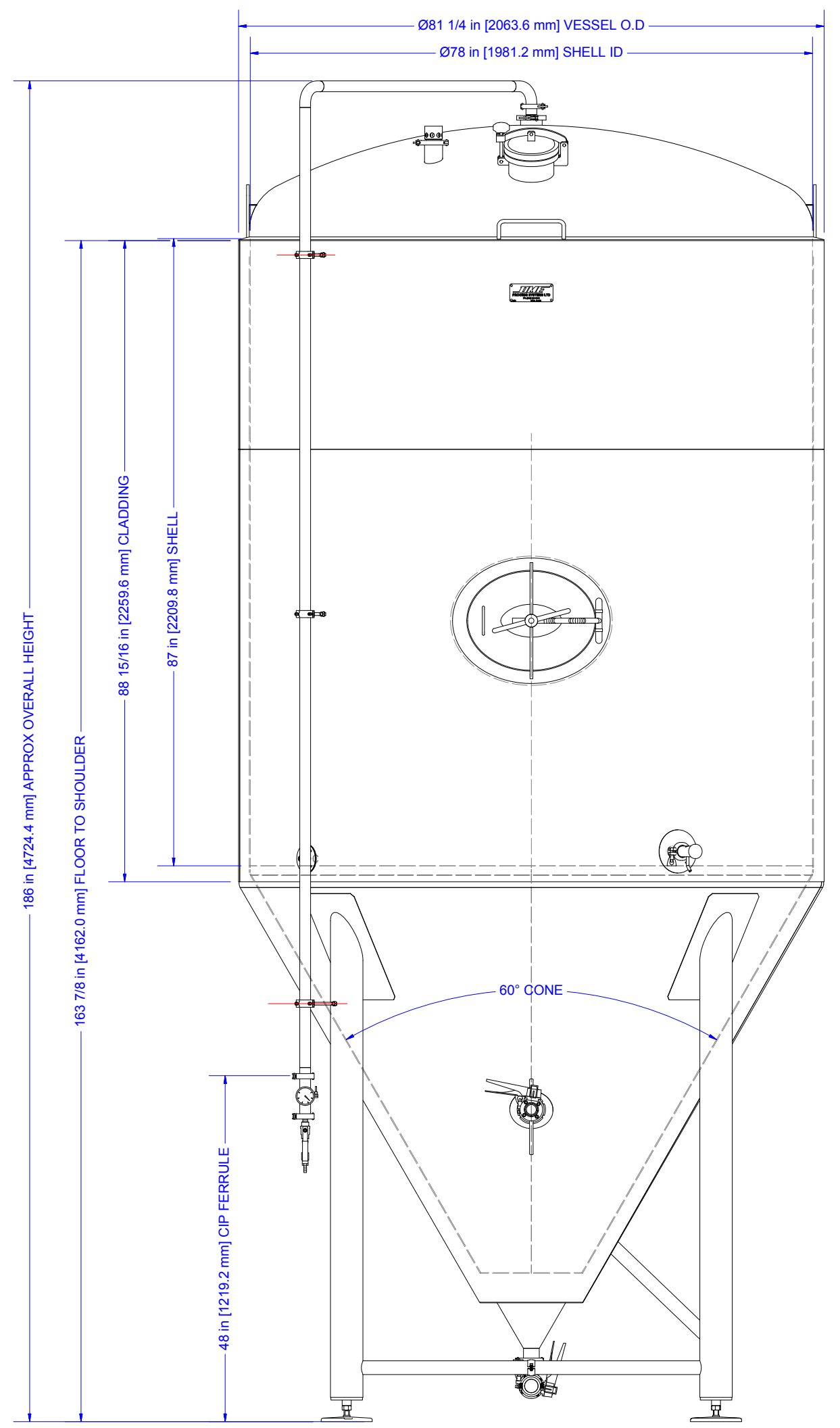


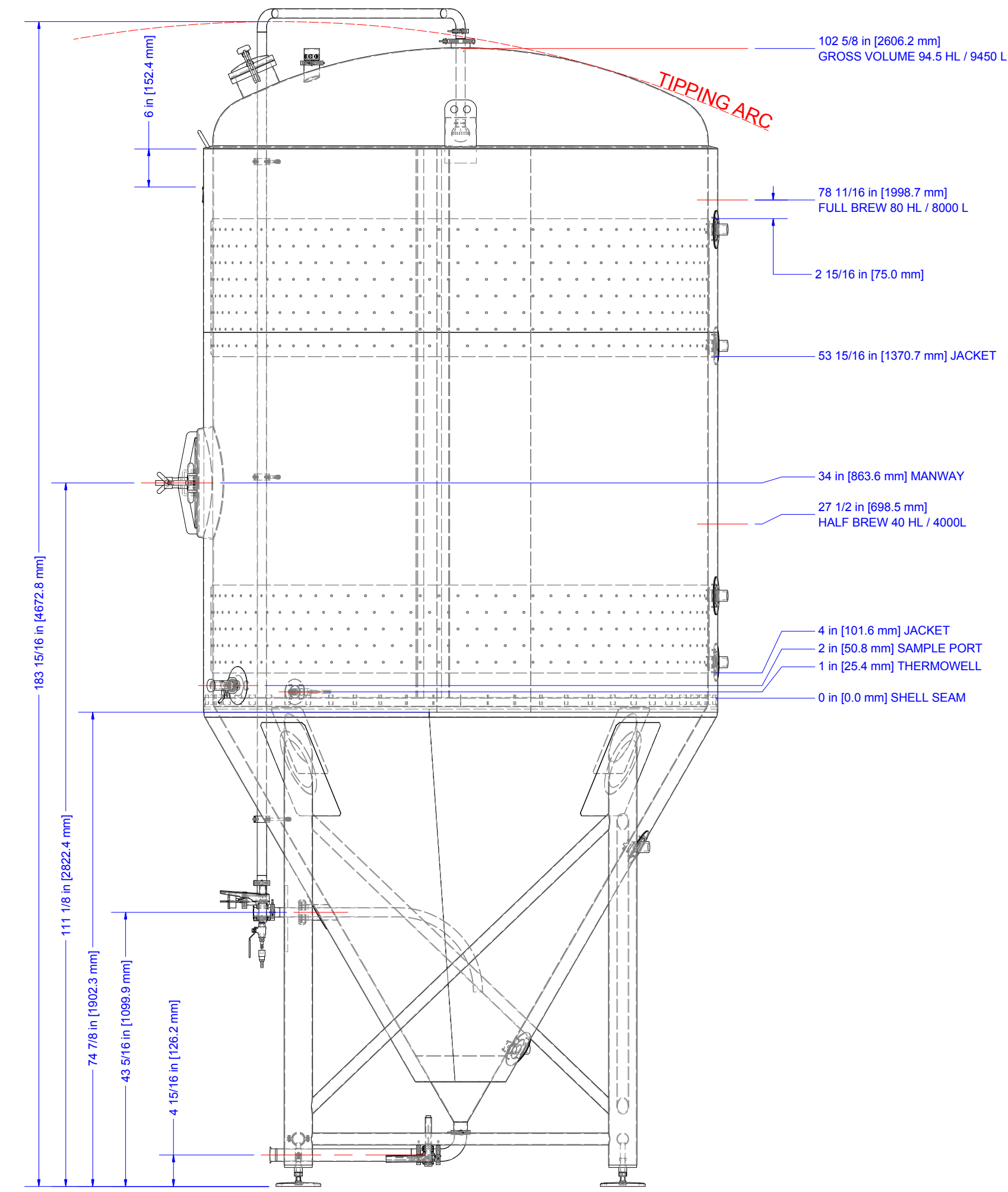
TOP VIEW
SCALE 1/18



BOTTOM VIEW
SCALE 1/18



FRONT VIEW
SCALE 1/18



SIDE VIEW
SCALE 1/18

JACKET DESIGN PARAMETERS

- INITIAL PRODUCT TEMP : 56-68°F / 13-20°C
- FINAL PRODUCT TEMP : 32°F / 0°C
- COOLING TIME : 24 HOURS
- PRIMARY FERMENTATION TIME : 2 DAYS
- PROP. GLYCOL SUPPLY TEMP : 28°F / -2°C
- PROP. GLYCOL FLOW : 13.1 GPM / 50 LPM
- PEAK LOAD : 36.5 MBH / 10.7 KW
- AVERAGE LOAD : 22.7 MBH / 6.7 KW
- GLYCOL VOLUME : 11 GAL / 42 L

VESSEL DESIGN PARAMETERS

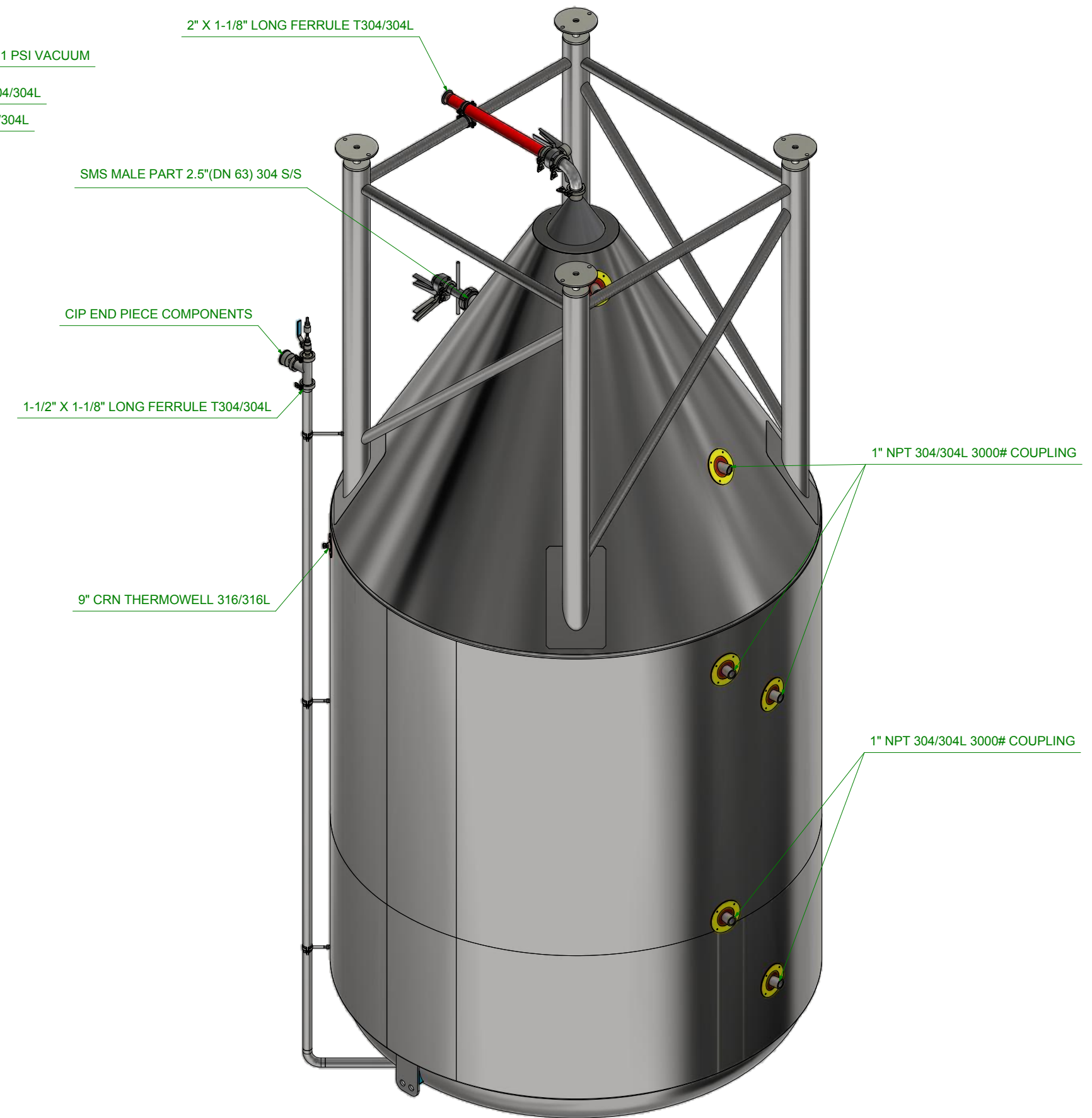
- VESSEL DESIGN TEMP. : 140°F / 60°C
- VESSEL DESIGN PRESSURE : 15 PSIG / 0.1 MPa
- JACKET DESIGN TEMP. : 140°F / 60°C
- JACKET DESIGN PRESSURE : 15 PSIG / 0.1 MPa
- EMPTY WEIGHT : 2761 LBS / 1252 KG
- WORKING WEIGHT : 20377 LBS / 9243 KG
- DESIGN CAPACITY : 80 HL / 8000 L
- GROSS CAPACITY : 94.5 HL / 9450 L
- FLOOR LOADING : 129 PSI / 0.89 MPa
- WETTED MATERIAL : 304/304L
- INSULATION : CLOSED CELL POLY FOAM

WELD FINISH

- INTERIOR:** GROUND FLUSH, STAIN REMOVED, POLISHED TO #4 FINISH ON MARGIN
- EXTERIOR CLADDING:** GROUND FLUSH, STAIN REMOVED, POLISHED TO #4 FINISH ON MARGIN
- EXTERIOR HEAD:** ROUGH STARTS AND STOPS REMOVED, STAIN REMOVED, BRIGHTENED ON A MARGIN
- TRIM RINGS:** ROUGH STARTS AND STOPS REMOVED, STAIN REMOVED, BRIGHTENED ON A MARGIN

MATERIAL FINISH

- SHELL:** 2B
- CLADDING:** #4 POLISH
- LEGS:** #4 POLISH



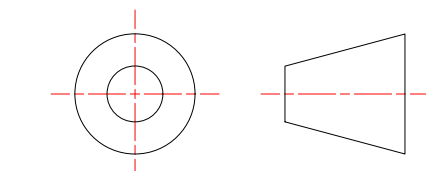
CONFIDENTIAL:
THIS DRAWING IS CONFIDENTIAL AND MAY BE SUBJECT TO PENDING PATENTS. IT MUST NOT BE COPIED, REPRODUCED OR SHOWN TO ANY THIRD PARTY OR PERSON WITHOUT THE CONSENT OF DME PROCESS SYSTEMS LTD.

DME FABRICATION TOLERANCE
UNLESS OTHERWISE SPECIFIED, DIMENSIONS ARE IN INCHES TOLERANCES ARE:

FRACTIONS	DECIMALS	ANGLES
± 1/16	.XX ± .01	± 1/2°
	.XXX ± .005	

DME WELD AND FINISH STANDARDS
T. TIG (GTAW)
M. MIG (GMAW)
S. STICK (SMAW)
O. ORBITAL (GTAW)

0 AS WELDED, LEFT AS LAID
1 AS WELDED DISCOLORATION REMOVED
2 ROUGH STARTS AND STOPS REMOVED
3 BRIGHTENED ON A MARGIN
4 GROUND, FINISHED TO #4 ON MARGINS
6 GROUND, FINISHED TO #6 ON MARGINS
(A) ACID CLEANING REQUIRED



REVISION HISTORY			
REV	DESCRIPTION	DFT	ENG
1	CUSTOM DESIGN	CM 23-APR-21	

DME PROCESS SYSTEMS LTD.
54 Hillstrom Ave, Charlottetown, PE
C1E 2C6, Canada Ph: (902) 628-6900 Fax: (902) 628-1313
www.dme.ca

RELEASED FOR FABRICATION	PROJECT DESCRIPTION
PROJECT NO. B5755-30	COVE KOMBUCHA
STANDARD ZUN060-C02-V02	DRAWING TITLE 80 HL UNITANK
SCALE NTS	DWG NO. B5755-30
SIZE D	REV 1
	SHEET 1 OF 5