

# AW-4600e

The integrated fully automatic weigh/wrap/label system



## Energy saving



The new AW-4600AT largely reduces power consumption by improving smooth motion controls and adopting standby mode.



**Approx. 50% reduction\***

\* Compared to the conventional AW-4600AT.

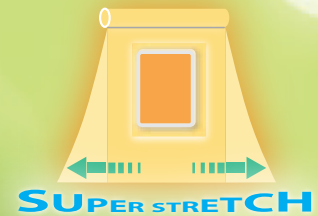
## Low noise

Using the newest technology of low vibration motors with vibration-absorption-design, 6dB of the operational noise is suppressed.



## Film savings

The super-stretching system delivers minimal film use. This helps save production costs while reducing waste for a better environment.



- AW-4600e (R-L) with optional POP Labeller \*
- Optional bottom labeller available

**Cope with both environmental and management aspects by DIGI's established AW-4600e.**

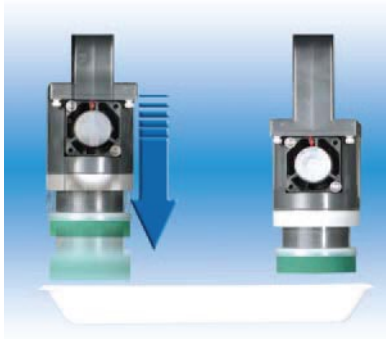
# The AW-4600e accomplishes backroom operation tasks while keeping total efficiency.

The new eco-friendly type saves power consumption and reduces CO<sub>2</sub> emission by approximately 410 kg a year. This is equivalent to the CO<sub>2</sub> amount absorbed by 373 maple trees in 1 year.\*

\* Calculated by the terms of 2000 packs/day, 12 hours/day, and 365 days based on "Act on promotion of global warming countermeasures", and "Green resources for global warming countermeasures" directed by Forestry Agency, Ministry of the Environment, Japan.

## Effective label presentation

The optional POP Labeller (on the left) prints and applies a sales promotional label simultaneously with the main price label. This reduces time, labor, and wasted labels, which often results with manual application.



• POP label images are not displayed at actual size



# AW-4600e

The integrated fully automatic weigh/wrap/label system

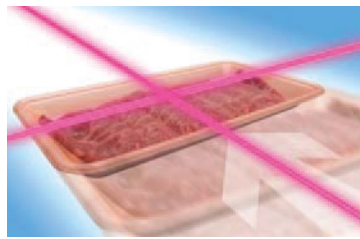
## High productivity with proven quality

The super-stretching system allows dynamic film savings with a single roll of film. The system resolved the conflicting needs of high-speed processing capacity and attractive wrapping finish by sufficiently stretching the film to eliminate wrinkles.

**Max. 36\***  
packs/min.  
\*The speed depends on commodity size.



## Automatic process control



The system automatically determines the optimum wrapping conditions by adjusting the degree of film stretching on commodity size fed into the machine

## Specifications

### Wrapping

Package size — Width: 130 - 380mm / 5.1 - 15 inches  
Height: 10 - 150mm / 0.4 - 6 inches  
Depth: 80 - 254mm / 3.1 - 10 inches

The maximum combination of the above dimensions is not available and available package size depends on the film width.

Wrapping speed — Max. 36 packages/min.

Number of film roll — One roll

Film width — 350 - 450mm / 14 - 18 inches

Film length — Max. 1,500m

### Labelling

Label type — Thermal paper

Labelling application — Automatic label application

Label size — Width: 40 - 80mm / 1.6 - 3.1 inches

Length: 28 - 105mm / 1.1 - 4.1 inches

### Console

Display panel — 10.4 inches TFT color

Keypad — Pictogram or English

### General

Externals — Resin and stainless steel construction

Power source and power consumption — 208/240V; 3PHASE; 50/60Hz; 2.7kVA

220-240V; 1 Ø; 50/60Hz; 7.5A; 1.7kW

Dimensions — 1410/55.5(W) × 1535/60.4(D) × 1465/57.7(H)  
mm/inches

Net weight — Approx. 400kg (Single Labeller Type)

Operation humidity — 90%RH (max.)

### Options

POP Labeller

Second Labeller

Bottom Labeller

Weighing Interval Type	Multi-interval		Single interval
	Max. 6/15kg	Max. 3/6kg	Max. 30 lb
Capacity	Max. 6/15kg	Max. 3/6kg	Max. 30 lb
Scale interval	e=2/5g	e=1/2g	e=0.01 lb
Weighing range	40g - 15kg	20g - 6kg	0.20 - 30 lb
Max. wrapping capacity	5kg	5kg	11 lb



\*Specifications are subject to change without prior notice.



**GAMMA SCALE**™  
Weighing Instruments  
Sales & Service

Tel: (905)455-8333

Fax: (905)455-0658

E-mail: info@gammascale.com

Website: www.gammascale.com