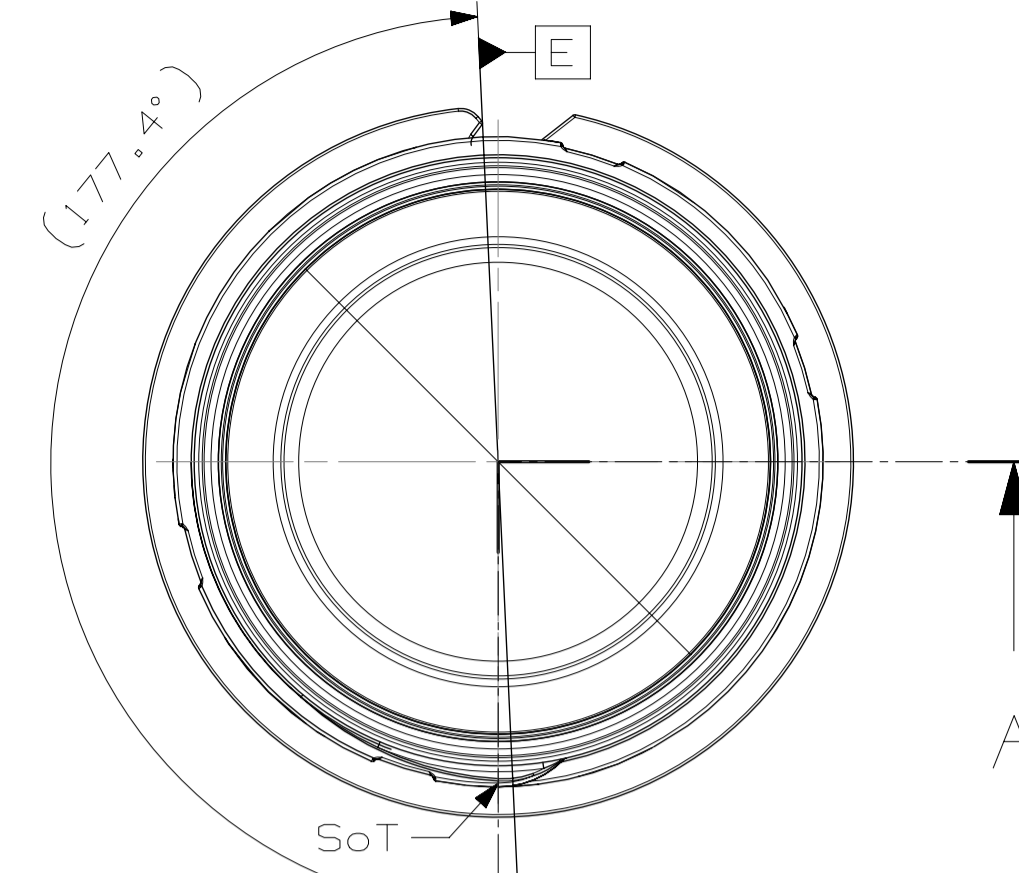
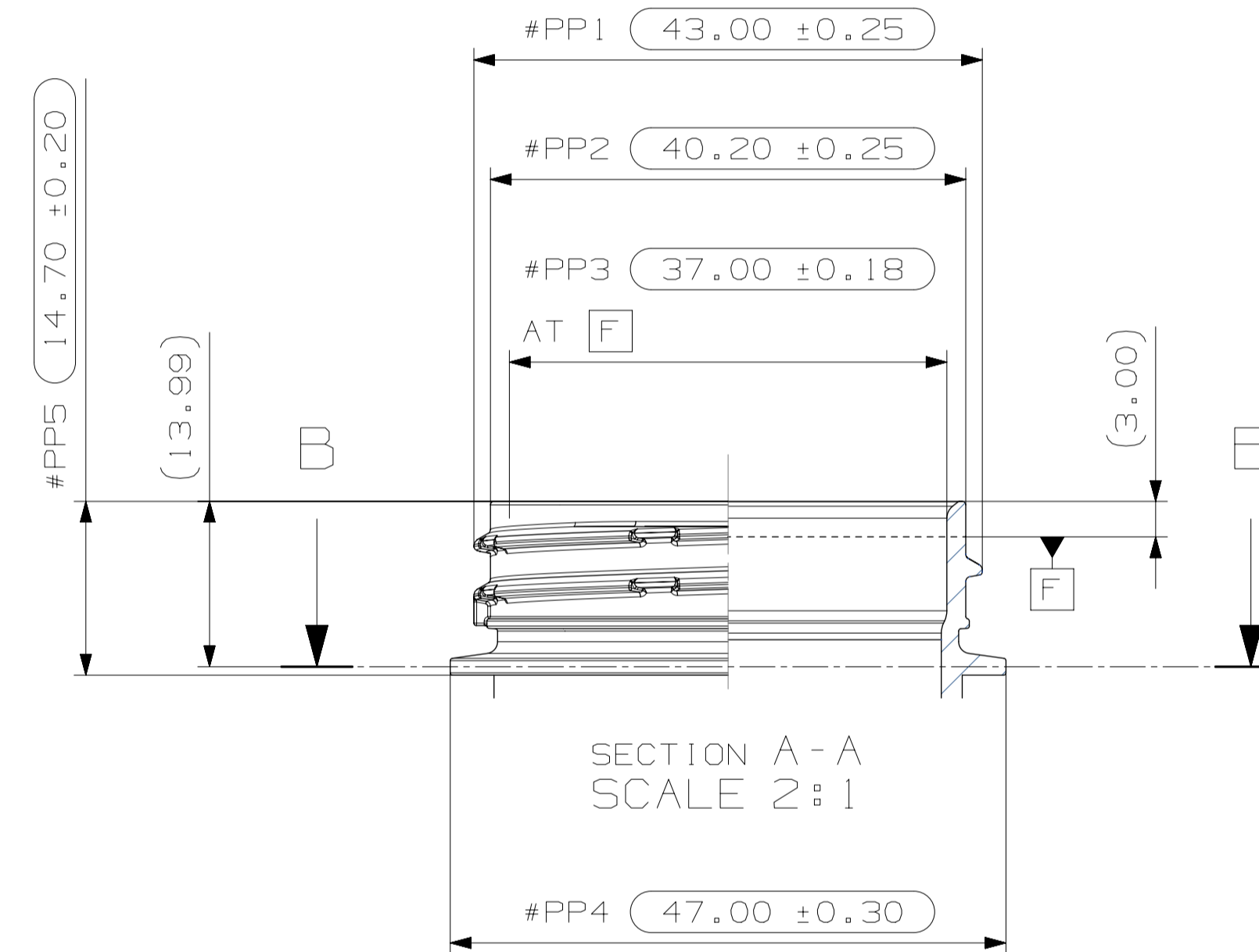
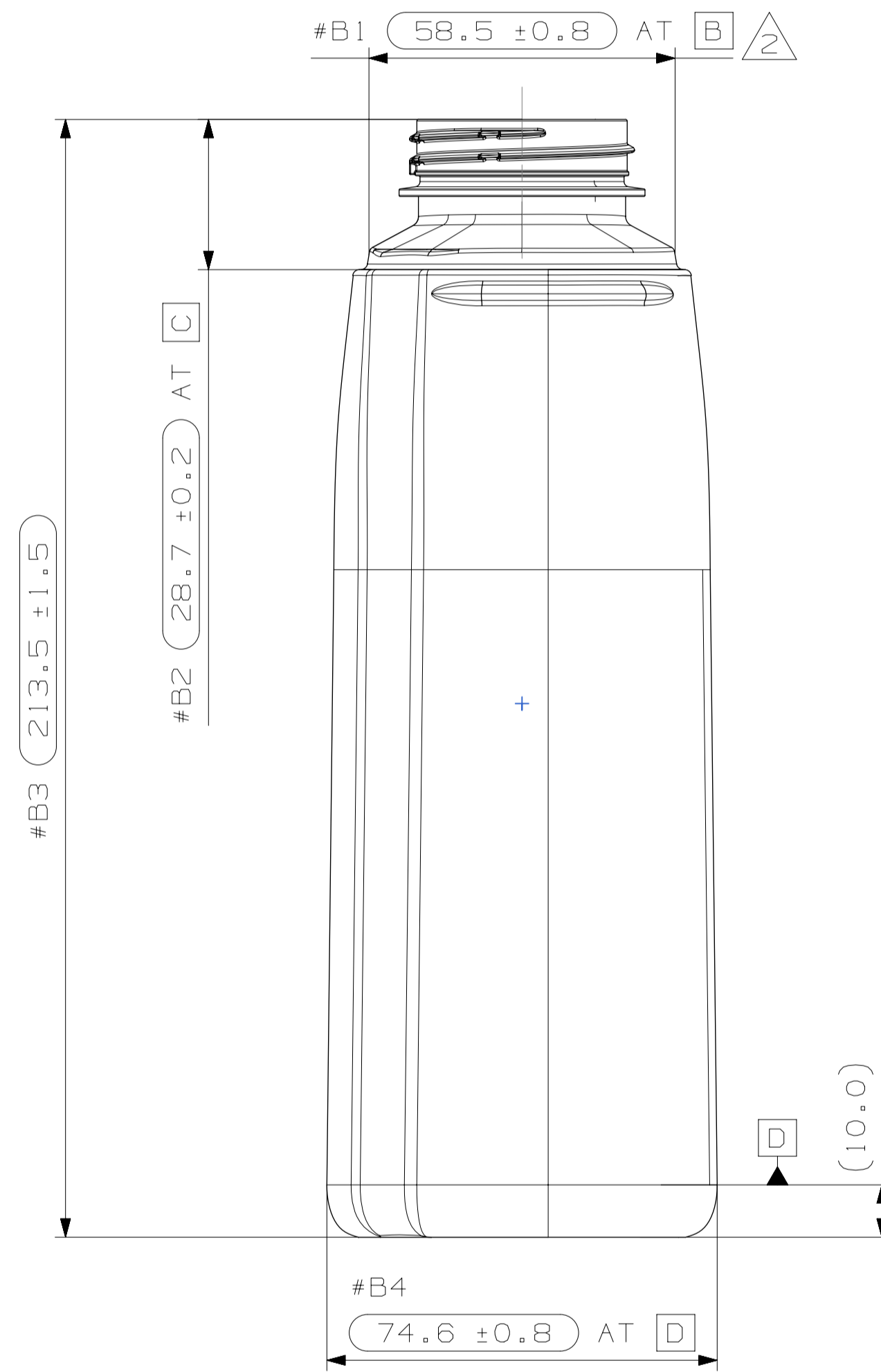
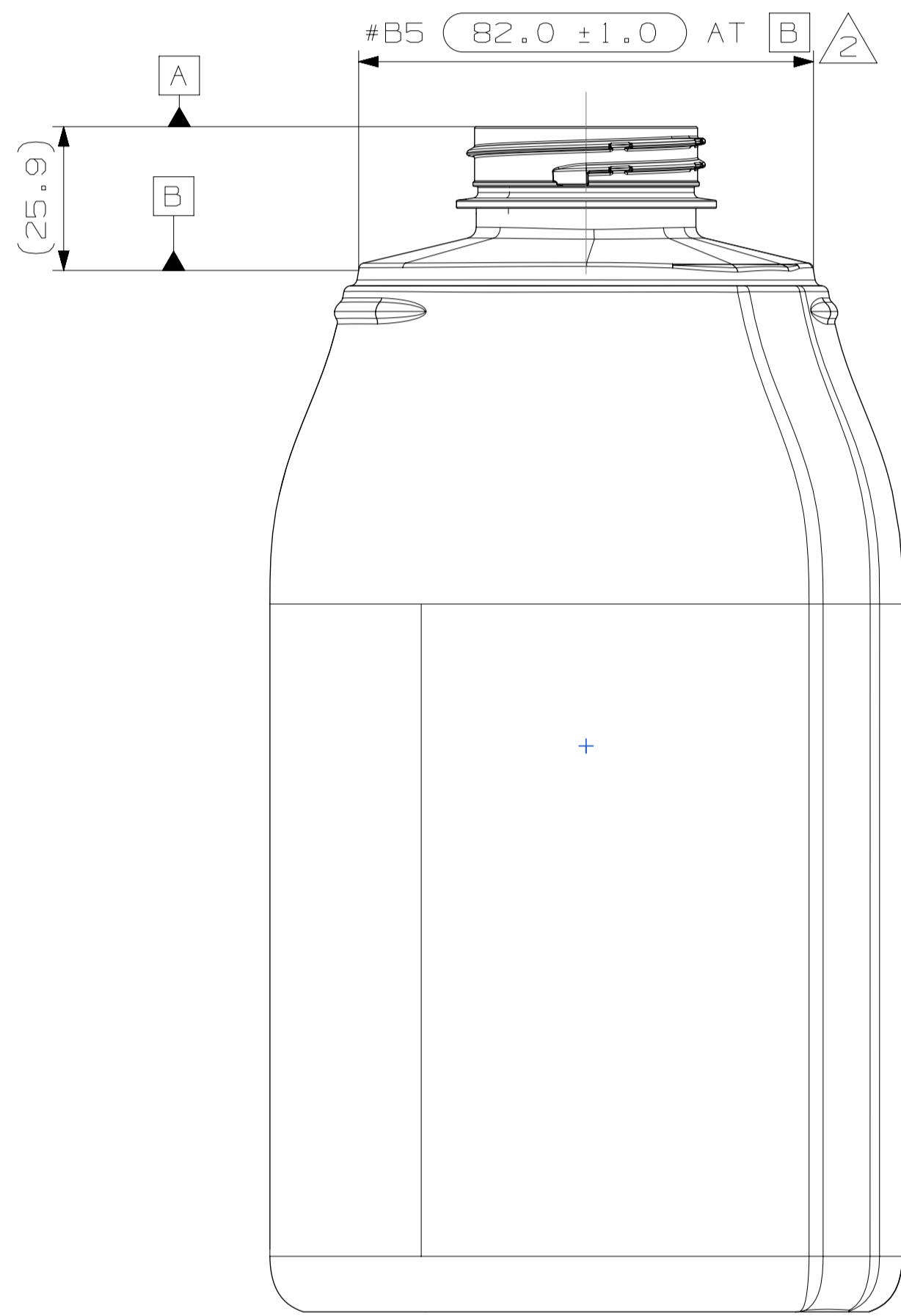


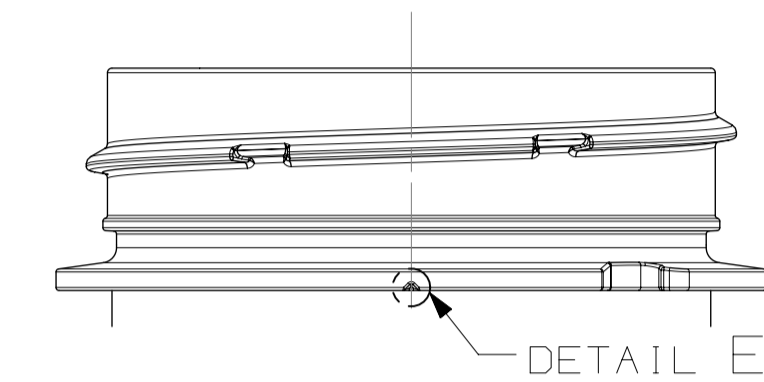
SCALE 2:1  
NOTCH ALIGNMENT VIEW



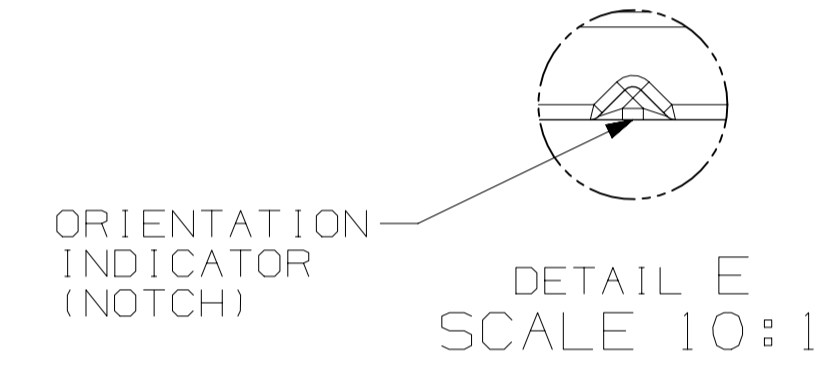
SCALE 2:1  
NECK DETAIL: TOP VIEW



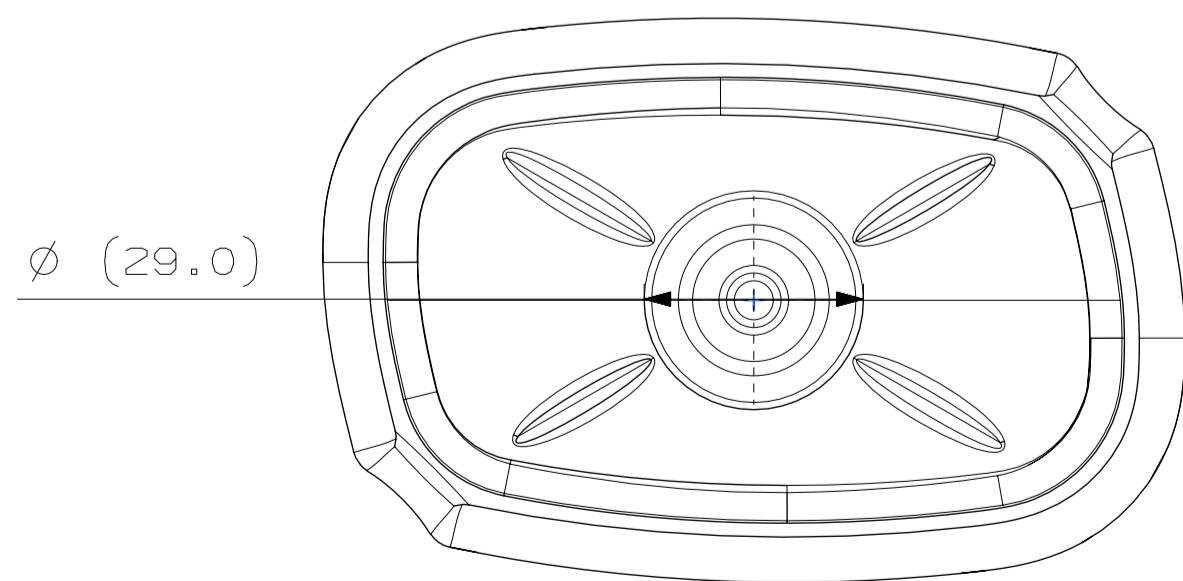
SECTION A-A  
SCALE 2:1



SCALE 2:1  
BACK VIEW



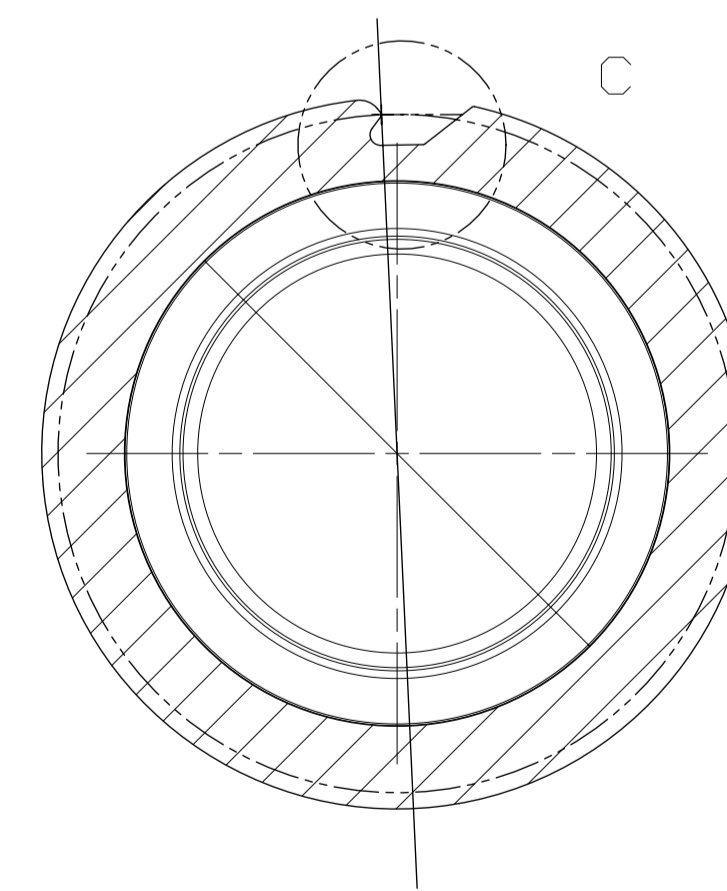
SCALE 10:1  
DETAIL E



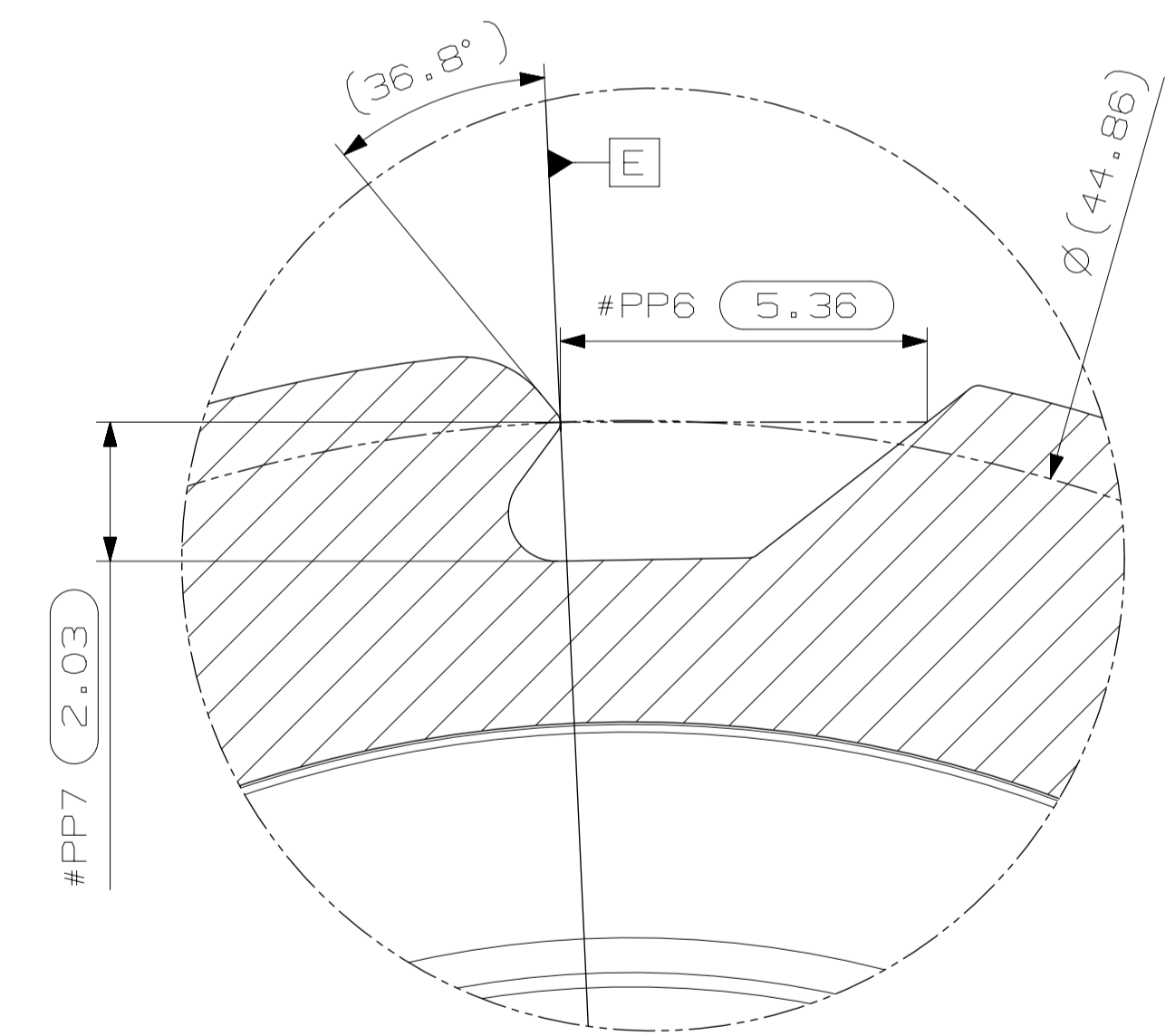
NECK DETAIL  
BIG BANG PREFORM

PITCH: 4.2mm  
TURNS: 1.25 (450°) WITHOUT  
START AND END OF THREAD  
STARTS: 1

THIS DRAWING SUPERCEDES ALL  
DRAWINGS WITH DWG NO: CAD0012242



SECTION B-B  
SCALE 2:1



SCALE 10:1  
DETAIL C

MANDATORY DIMENSIONS FED TO THE SPECIFICATION			
COMPONENT PROPERTIES			
	TARGET	+	-
HEIGHT	213.50 mm	1.50 mm	1.50 mm
PACKAGE DIMENSIONS			
LENGTH	74.60 mm		
WIDTH	114.00 mm		
HEIGHT	213.50 mm		
DIAMETER			
MANDATORY DIMENSIONS ON THE DRAWING ONLY			
	TARGET	+	-
COMPONENT PROPERTIES			
NECK FINISH HEIGHT H DIMENSION	14.70 mm	0.20 mm	0.20 mm
BORE DIAMETER I DIMENSION	37.00 mm	0.18 mm	0.18 mm
BORE OVALITY		±0.36 mm	
CREST OF THREAD T DIMENSION	43.00 mm	0.25 mm	0.25 mm
ROOT OF THREAD E DIMENSION	40.20 mm	0.25 mm	0.25 mm
THREAD PITCH		4.20 mm	
MINIMUM WALL THICKNESS		0.30 mm	
Measurements are managed by the following Unilever Methods of Analysis (UMA):			
Neck Finish Height H Dimension		UMA-5242	
Bore Diameter I Dimension		UMA-5242	
Bore Ovality		UMA-5242	
Crest of Thread T Dimension		UMA-5242	
Root of Thread E Dimension		UMA-5242	
Thread Pitch		UMA-5242	
Wall Thickness		UMA-5278	

REV	MODIFICATION	DRWN/CHKD/APP	DATE
5	WEIGHT CHANGE - 55g TO 62g	LB	31/03/2017
3/4	NO 2D CHANGE - SPEC UPDATE	LB	31/03/2017
2	DIMENSIONAL UPDATES	LB/ JC / DF	20/06/2016
1/C	MDL DRAWING	LB	18/04/2016
B	UPDATED BASE VIEW TO REFLECT NEW GEOMETRY. ADDED BACK VIEW & DETAIL E	LB / JC / DF	31/03/2016
A	DATA IMPORT INTO TC10	LB / JC / DF	17/02/2016

TECHNOLOGY:	SCALE:	TOLERANCES UNLESS STATED:	DO NOT SCALE	DRWN BY:	DWG NAME:
G-BOTTLE-PLASTIC Threaded	1/1 Unless Stated	0.25 mm		L. BREEN	BOTTLE MONO PET 1278ml Doz M BT
REF MAT:	EST WEIGHT:	0.25 mm	UNCONTROLLED COPY	DRWN BY DATE:	DWG NO.
PET Bottle Grade	62g	0.25 mm	17/02/2016	17/02/2016	C510000201909
		ANGLES: 1.00			5 SHEET 1/1