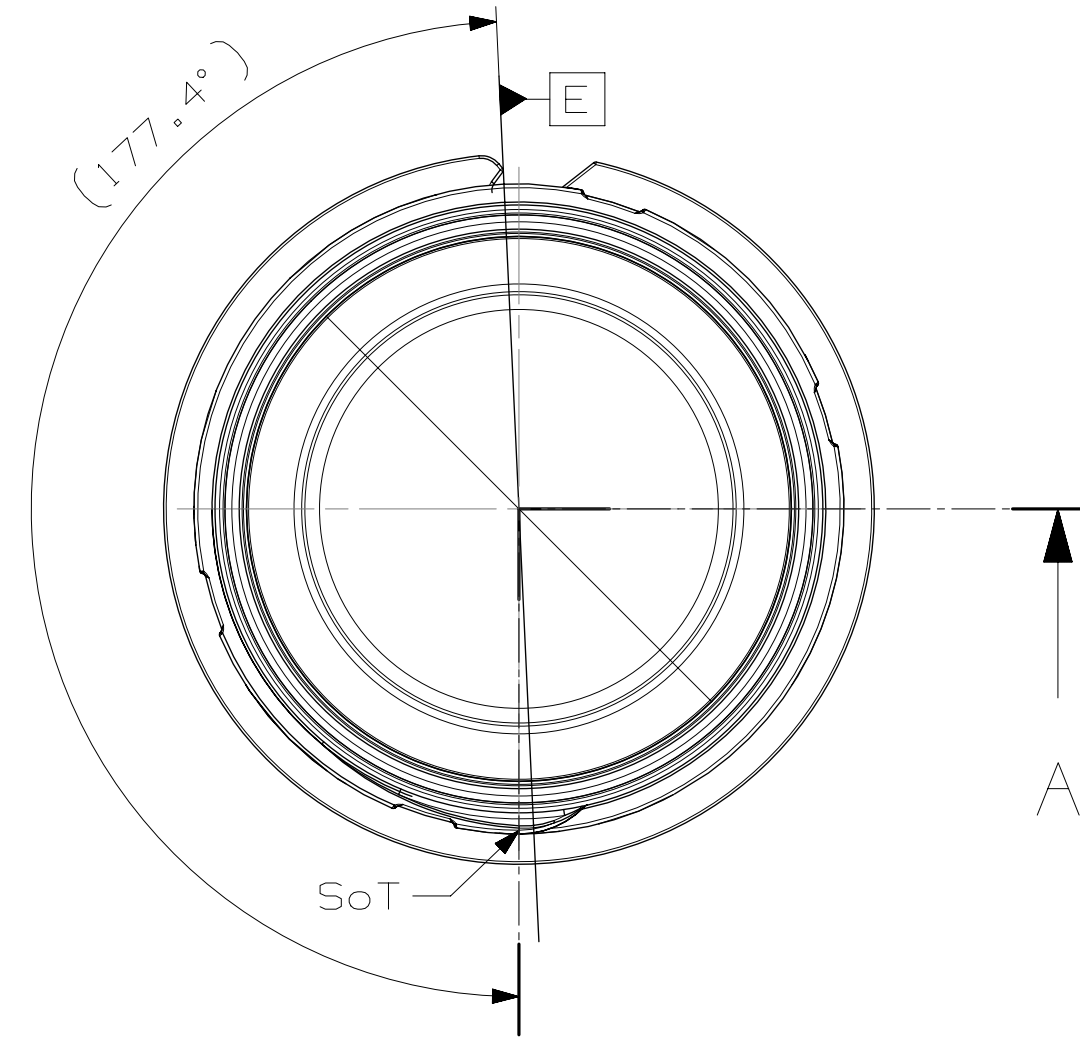
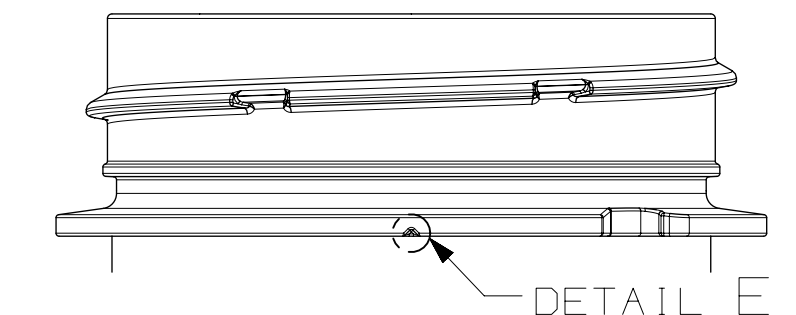


SCALE 2:1
NOTCH ALIGNMENT VIEW

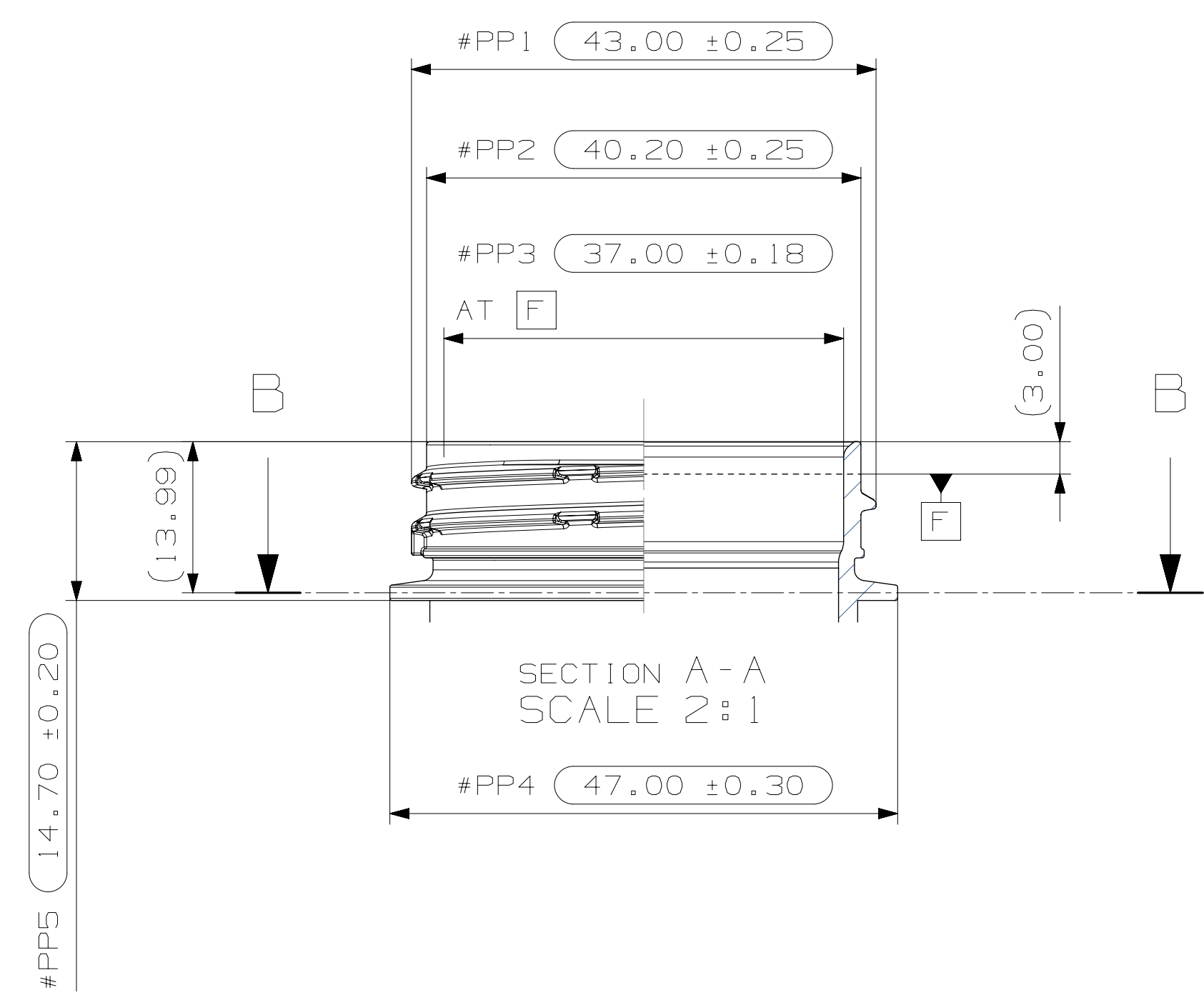
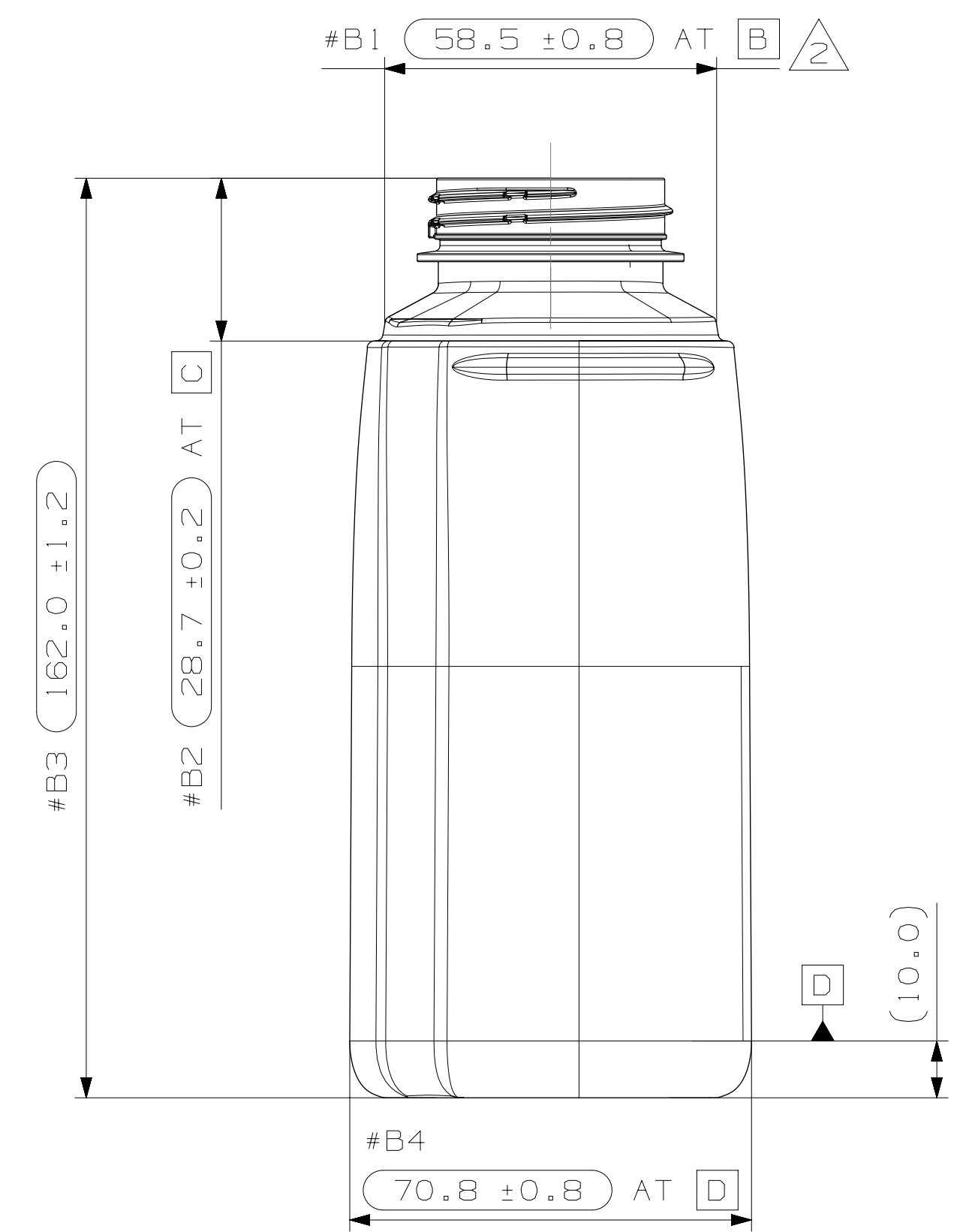
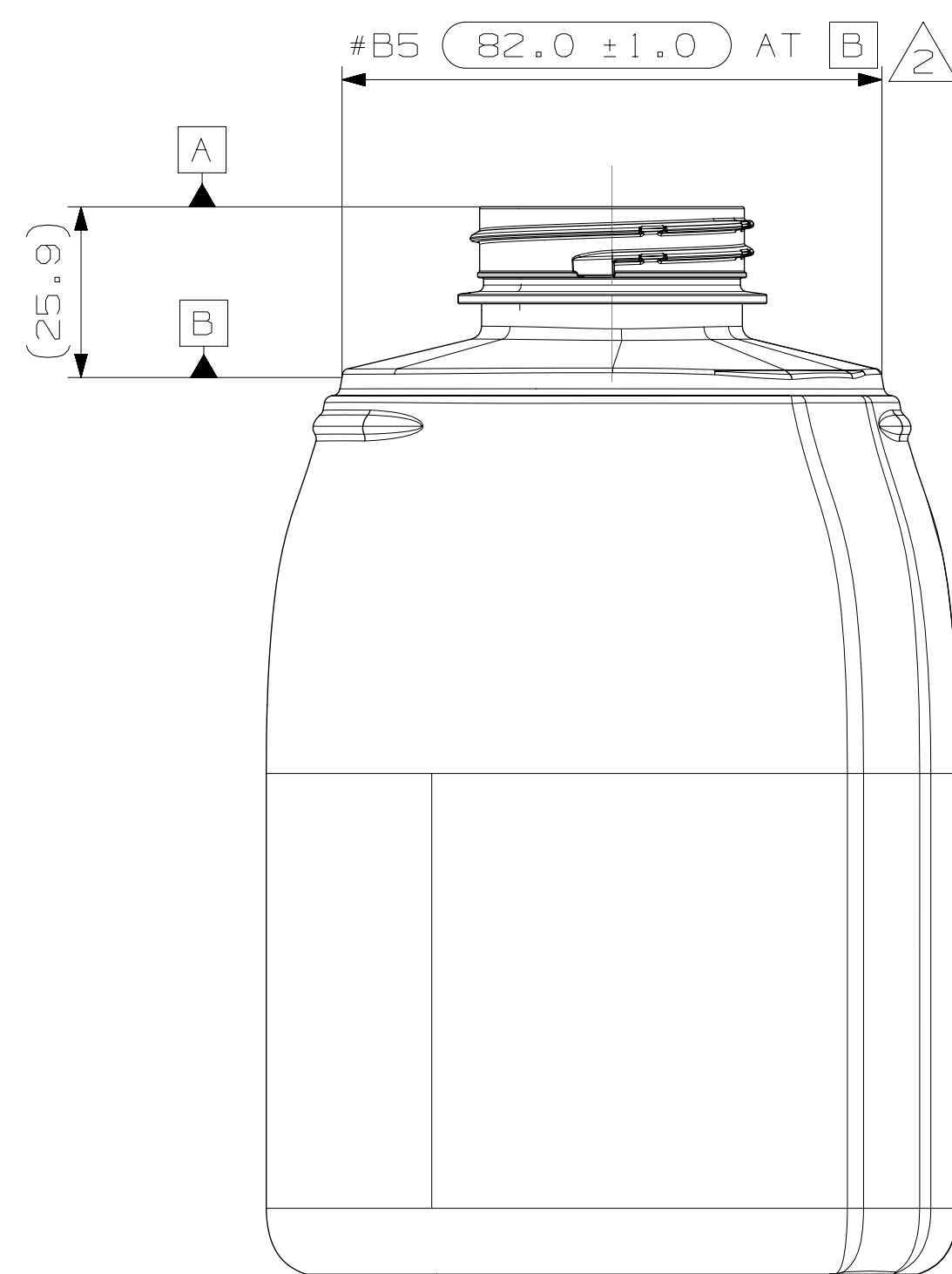


SCALE 2:1
NECK DETAIL: TOP VIEW

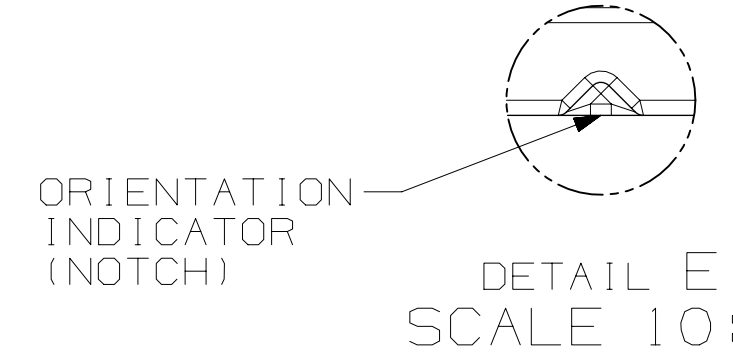
MANDATORY DIMENSIONS FED TO THE SPECIFICATION			
COMPONENT PROPERTIES			
	TARGET	+	-
HEIGHT	162.00 mm	1.20 mm	1.20 mm
PACKAGE DIMENSIONS			
LENGTH	70.80 mm		
WIDTH	105.00 mm		
HEIGHT	162.00 mm		
DIAMETER			
MANDATORY DIMENSIONS ON THE DRAWING ONLY			
	TARGET	+	-
COMPONENT PROPERTIES			
NECK FINISH HEIGHT H DIMENSION	14.70 mm	0.20 mm	0.20 mm
BORE DIAMETER I DIMENSION	37.00 mm	0.18 mm	0.18 mm
BORE OVALITY		±0.36 mm	
CREST OF THREAD T DIMENSION	43.00 mm	0.25 mm	0.25 mm
ROOT OF THREAD E DIMENSION	40.20 mm	0.25 mm	0.25 mm
THREAD PITCH		4.20 mm	
MINIMUM WALL THICKNESS		0.30 mm	
Measurements are managed by the following Unilever Methods of Analysis (UMA):			
Neck Finish Height H Dimension		UMA-5242	
Bore Diameter I Dimension		UMA-5242	
Bore Ovality		UMA-5242	
Crest of Thread T Dimension		UMA-5242	
Root of Thread E Dimension		UMA-5242	
Thread Pitch		UMA-5242	
Wall Thickness		UMA-5278	



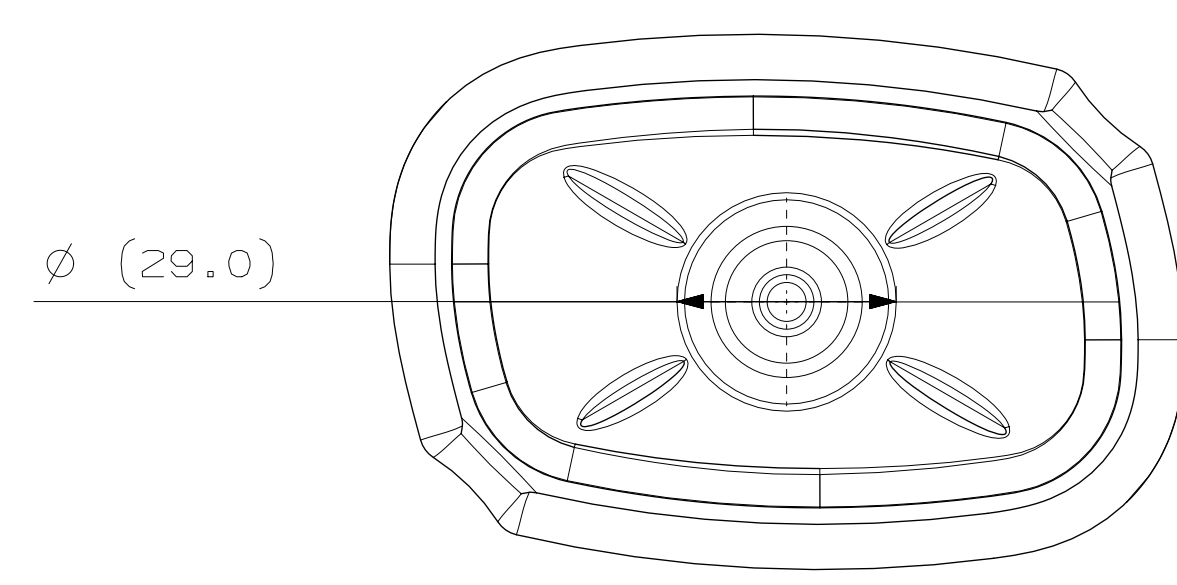
SCALE 2:1
BACK VIEW



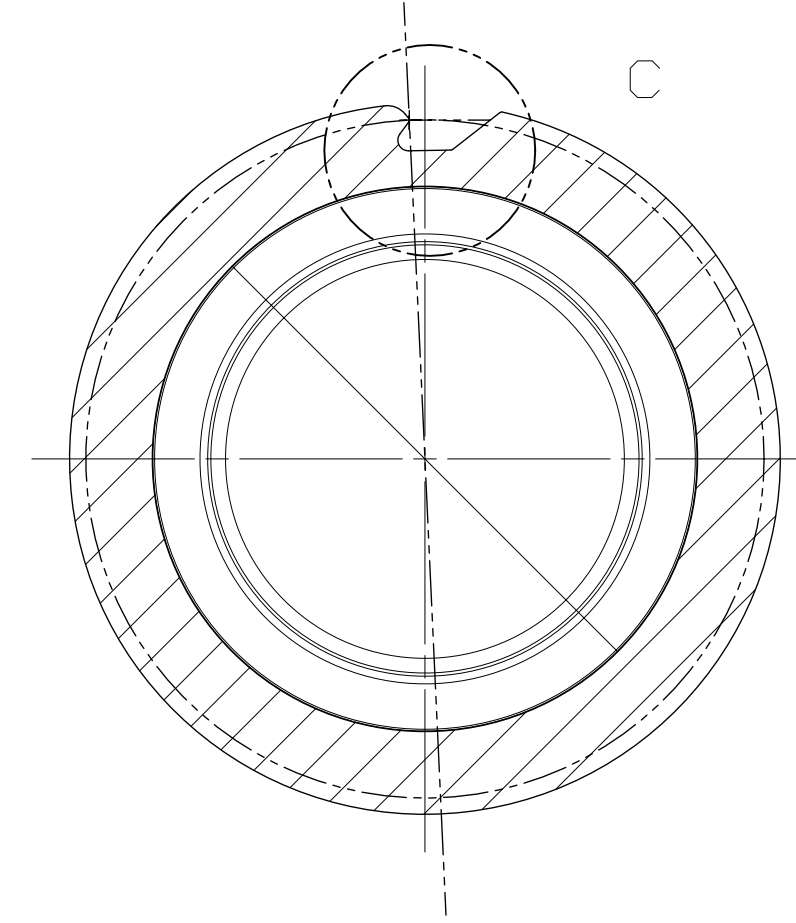
SECTION A-A
SCALE 2:1



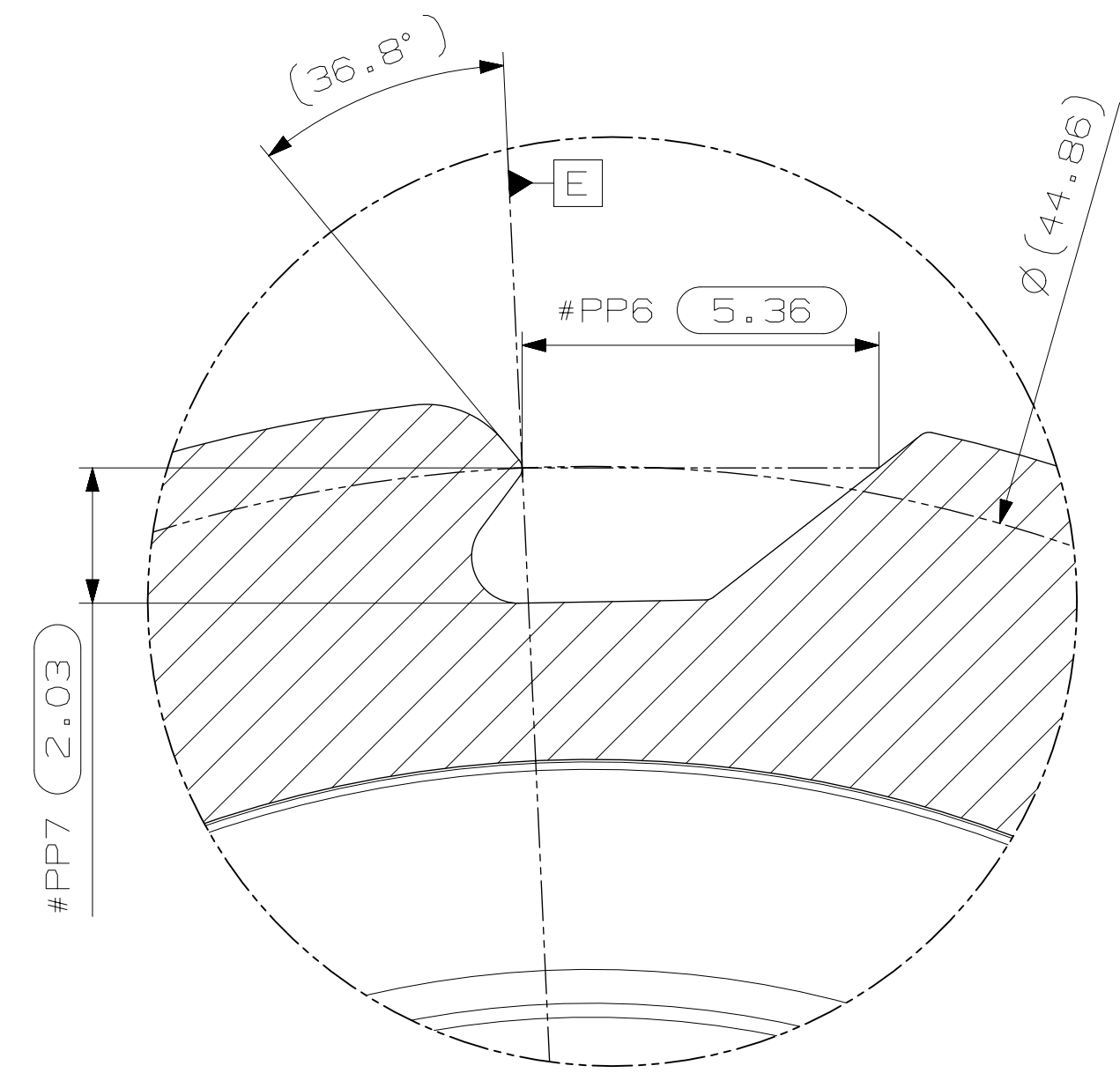
SCALE 10:1
DETAIL E



NECK DETAIL
BIG BANG PREFORM
PITCH: 4.2mm
TURNS: 1.25 (450°) WITHOUT
START AND END OF THREAD
STARTS: 1
THIS DRAWING SUPERCEDES ALL
DRAWINGS WITH DWG NO: CAD0012383



SECTION B-B
SCALE 2:1



SCALE 10:1
DETAIL C

TECHNOLOGY: G-BOTTLE-PLASTIC Threaded	SCALE: 1/1	DO NOT SCALE	DRWN BY: L. BREEN	DWG NAME: BOTTLE MONO PET 826ml Doz 5 BT
REF MAT: PET Bottle Grade	EST WEIGHT: 38.2 g	DO NOT SCALE	DRWN BY DATE: 18/02/2016	DWG NO.: C510000201918
Tolerances unless otherwise stated: 0 TO 0.6 ±0.05 0.6 TO 1.5 ±0.10 1.5 TO 30 ±0.20 30 TO 75 ±0.30 75 ±0.50 ANGLES ± 1.00		UNILEVER	REV: 5	SHEET: 1/1

REV	MODIFICATION	DRWN/CHKD/APP	DATE
5	WEIGHT CHANGE	LB	15/11/2016
3, 4	NO DRAWING CHANGE. DRAWING REVISION UPDATED TO KEEP IN LINE WITH 3D DATA REVISION		
2	DIMENSIONAL CHANGES	LB / JC / DF	20/06/2016
1/C	MDL DRAWING	LB	18/04/2016
B	UPDATED BASE VIEW TO REFLECT NEW GEOMETRY. ADDED BACK VIEW & DETAIL E	LB / JC / DF	31/03/2016
A	DATA IMPORT INTO TC10	LB / JC / DF	18/02/2016