

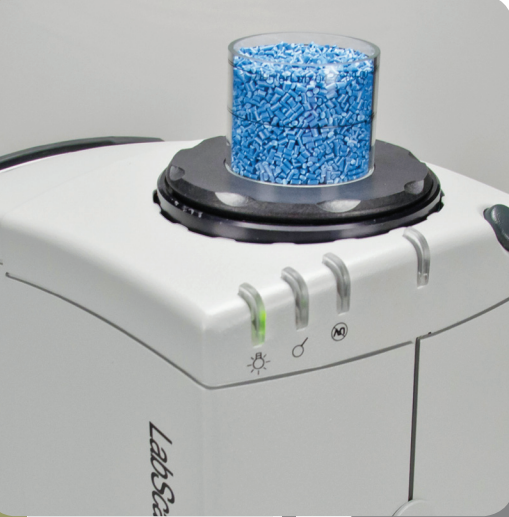


LabScan® XE



measure
color
the way your
eye sees it





LabScan® XE - Engineered for performance Designed with automated simplicity

There's a new dimension in the way you'll look at measuring samples. The LabScan® XE spectrophotometer takes color measurement to a new and totally different level of sophistication, with more simplicity, more automated features and more versatility than any other product. From powders, solids and liquids, to pellets, chips, yarn or paper, LabScan® XE is the cutting-edge solution for a host of color measurement applications in plastics, textiles, paint, food, paper, chemicals, pharmaceuticals and building materials.

DESIGNED FOR

powders

GRANULES

Sugar

PELLETS

Liquids
detergents

resins

pigments

CHIPS

laminates

sauces

Soups

SPICES

cement &
concrete

YOGURTS

juices

panels &

plaques

COLORANTS

all dry chemicals

DAIRY

paint panels

fruit

Cheeses

powder
coatings

nuts

Solids

MEASURE Like the eye "sees" color

0°/45° optical geometry for a better perspective on "seeing" color.

The same color, when seen on surfaces that differ by gloss or texture, ends up "looking" like a different color to the human eye. LabScan® XE measures and "sees" that difference in appearance the same way the human eye does. Its 0°/45° circumferential geometry incorporates a 15-station, fiber-optic ring that collects and averages reflected light from all stations. The result is a fast, simplified measurement that automatically accounts for the effects of variations in textures, finishes or granulations.

Versatility

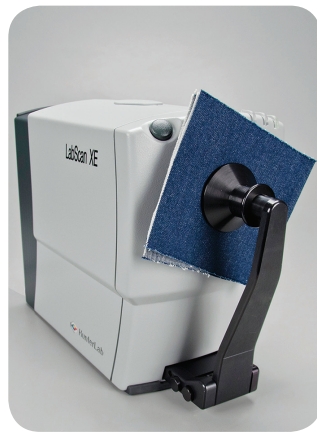
Versatility in measuring-from incoming raw materials to finished goods.

Samples come in all sizes, shapes and forms, and LabScan® XE gives you the capability to measure their color with unparalleled versatility, simplicity and accuracy. It features one of the largest illuminated sample areas available-44 mm-which gives you superior precision when scanning textured, non-uniform samples.

An optional automated Variable Sample Illumination (VSI) feature allows you to measure from 44 mm to 3 mm, for maximum flexibility in the sizes and kinds of samples you can measure. The VSI feature also gives you far more accuracy in measuring translucent solids or liquids. What's more, you can measure with the sample port facing up, forward (sideways), or, with an optional stand, straight down. It also delivers superior inter-instrument agreement at multiple sites.

Features

- Compact, Single-Piece Design - space-saving footprint, no external power supply.
- Dual-Beam Optics - the optimum level of accuracy, repeatability and long-term performance.
- Read Function Button - next to sample port; measurement can be taken at sensor without moving hands to the computer.
- Port-Up or Port Forward Orientation - measure translucent liquids, opaque solids and plaques, powders, pellets or pastes.



Port Forward Orientation with optional sample clamp.



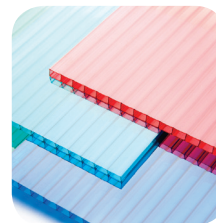
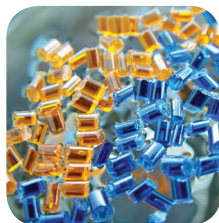
The HunterLab Advantage

The LabScan® XE is backed by over 60 years of quality innovation and experience from HunterLab, the world's most trusted color quality experts.

With an unmatched reputation for delivering the right solution for any challenge, HunterLab tailors products and technologies for every color measurement need and budget offering the broadest range of color measurement solutions in the industry.

For more information go to www.hunterlab.com or contact your local HunterLab representative.

An optional Port Down Stand lets you view and measure samples from a straight-down angle for added versatility.



Accessories



D02-1009-200

Sample Clamp Assembly

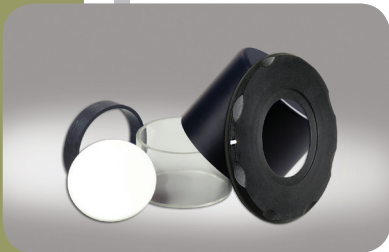
Holds samples securely at the sample port for measuring with the instrument in the port forward orientation. Includes interchangeable white and black backing.



D02-1009-350

Port Down Stand Assembly

Permits port-down mounting of the sensor. Includes an adjustable arm assembly with clamp.



LSXE-SC-ASSY

LabScan XE Sample Cup Set

Consists of 2.5 inch glass sample cup, sample cup opaque cover, ring and disk set and port insert.

04-7209-00

Glass Sample Cup: 64 mm (2.5 in)

Optically clear glass cup for sample presentation of liquids, powders, granules, and pellets.

02-4579-00

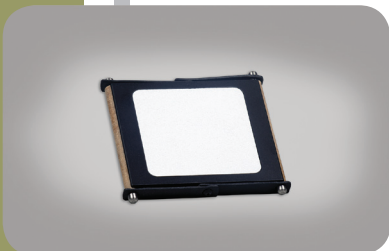
Ring and Disc Set

For use in the glass sample cup for sample presentation of liquids, powders, granules, and pellets.

A02-1010-316

Port Insert

The port insert is designed to hold the sample cup in proper position at the measuring port.



02-7396-00

Skein Holder

Sample Presentation Device used for measuring yarns and string skeins.