



Thomas Engineering, the originator of the Accela-Cota[®] has been a partner in the pharmaceutical solid dosage processing industry for more than 60 years helping customers develop and manufacture pharmaceutical products in an efficient and cost effective manner.

Our customers appreciate the value of a partnership with Thomas Engineering, the market leader dedicated to tablet coating systems. These customers know that their investment extends beyond a system of machines and controls – they also benefit from our expertise and competency resulting from decades of experience with tablet coating systems in the field. The dividend is their assurance that their Thomas systems will deliver reliable performance and consistently excellent finished products for many years.



Thomas Flex 05[®]

Thomas Flex 100[®]

Thomas Flex 200[®]

Thomas Flex 500[®]

Thomas Flex 1000[®]

Thomas Flex CTC[®]

Thomas Accela-Cota PRO[®]



Thomas Engineering Inc. 575 West Central Road, Hoffman Estates, IL 60192, USA
 thomaseng.com - Tel: +1-847-358-5800

All illustrations and specifications are subject to change without notice
 Patent Pending



RECIPE DRIVEN R&D / PILOT SCALE TABLET COATING SYSTEM

Thomas Flex 100 R&D/ Pilot Scale Tablet Coater featuring the Accela-Cota® Technology

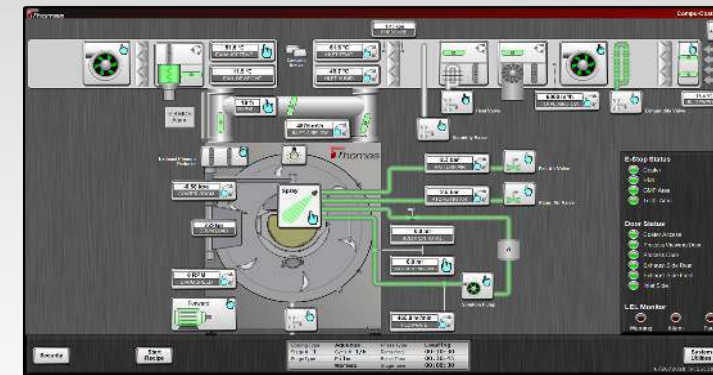
TOTAL COVERAGE – Every Tablet – Every Process – Every Time



The Thomas Flex 100® is a fully integrated, recipe driven R&D / pilot scale tablet coating system with exchangeable drums. Designed to offer a wide variety of industry leading high-performance features, the Flex 100® features external gun positioning, auto unload, patented Thomas Spray Bar® with Schlick patented ABC technology and 6 exchangeable drums allowing for capacity range of 2-120 Liters. Thomas Flex 100® also comes with Wash-In-Place configurations and an optional containment version for use with highly potent products.

COMPU-COAT® Controls

Thomas Flex 100® is offered with the state of the art manual or recipe driven control systems featuring our latest Compu-Coat® multi-language operating system. The Flex 100® also features the patented Thomas Spray Bar with external gun positioning.



HIGH-PERFORMANCE FEATURES:

- Suitable for Film, Functional, Sugar & Drug Layer Coating
- Patented Thomas Spray Bar®
- External Gun Positioning
- Auto Unload
- Exchangeable Drums with 2-120 Liter Capacity Range
- Wash In Place Options



INDUSTRY PROVEN FULLY PERFORATED DRUM DESIGN

- Maximum coating quality
- Maximum tablet coating efficiency
- Ideal mixing action
- Turbulence-free air flow path

| Technical Data | 19B | 24B | 24XC | 30B | 30C | 36B |
|----------------------------|----------------|----------------|----------------|----------------|----------------|----------------|
| Drum Profile | | | | | | |
| Drum Diameter Inches, [mm] | 19" [480mm] | 24" [610mm] | 24" [610mm] | 30" [760mm] | 30" [760mm] | 36" [915mm] |
| Drum Capacity | 8 liters | 25 liters | 75 liters | 75 liters | 125 liters | 110 liters |

Mechanical Dimensions: Width 53" [1,350 mm] x Height 80" [2,000 mm] x Depth 65" [1,650 mm]
Net Weight: 4,000 lbs [1,800 kg]