

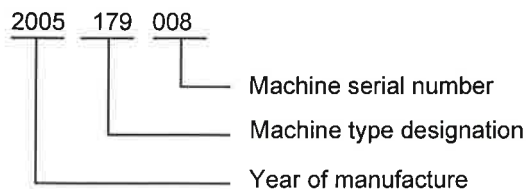
## 2.2.2 Material data

<b>Basic material:</b>	commercial quality PP and PVC-film from approx. 0,120 mm up to a max. of 0,300 mm thickness, paper from 120 up to approx. 190 g/m <sup>2</sup> ; if producing with paper/cardboard up from approx. 160 g/m <sup>2</sup> it is necessary to use a brake bar (depending on the quality of the paper)
<b>Mat. unwinding:</b>	roll outside diameter 1500 mm (59 inch) core diameter 150 mm (6 inch)
<b>Stamping foil for tab and logo printing:</b>	roll outside dia. max. 180 mm (tab), logo film max. 140 mm core diameter 25 mm
<b>Feed:</b>	variable from 160 to 250 mm feed tolerance +/- 0.2 mm
<b>Machine output:</b>	depending on material quality and thickness, size and kind of production, e.g. sheets per index set.

The following indications are an example for the max. output when producing A4 standard index sets:

sheets per set	cycles/minute
5	230
10	250
12	250
15	250
20	250
31	250

## 2.2.3 Machine type designation





## 2. Product Description

---

### 2.1 Intended Use

---

The machine is designed for the production of complete collated standard index sets from the material roll, number of sheets per set can be chosen individually.

Use of the **TA-R 5 179** for any other purpose or in other areas will invalidate the warranty. If the owner wishes to use the machine for other purposes, he must first ask the Customer Service department of Messrs. Widmann Schweißmaschinen for permission. The application for this permission must be made in writing.

### 2.2 Product Data

---

#### 2.2.1 Machine data

---

<b>Machine designation:</b>	Register automatic
<b>Machine type:</b>	TA-R 5 179
<b>Machine-No:</b>	2005 179 008
<b>Year of manufacture:</b>	2005

For further machine dimensions, see Section "Layout plan".

<b>Electrical data:</b>	400 V - 50 Hz - 3 phase max. fuse rating 3 x 35 A
-------------------------	--

<b>Main feed:</b>	AC servo motors
-------------------	-----------------

<b>Pneumatic connection:</b>	6 bar, $\pm 10\%$ , $\frac{3}{4}$ "-connector, approx. 400 NL/min without packaging machine free of oil and condensate, maximum size of dirt particles 3 $\mu$ m.
------------------------------	--