

Project: IMMUNOMEDICS INC.
 EQUIP#: FT23-0120
 CUST. PO#: PO0020015
 for information only
 for approval
 by: _____
 date: _____
 certified for construction
 by: _____
 date: _____
 certified as built
 by: *Blaine Pade*
 date: *2019-04-15*

STERIS STERIS Canada Corporation <small>This document contains confidential and proprietary information of STERIS Corporation. Neither this document nor the information herein are to be reproduced, distributed, used or disclosed, either in part or in whole, except as specifically authorized by STERIS Corporation.</small>		TITLE Reliance® 680PG Pharmaceutical Grade Washer GENERAL ARRANGEMENT	
REFERENCE FROM: DRAWING # REV. 920-514-116 E		DWG. NO. 920-525-263 1 SHEET OF 6 DATE 2017-07-13 DATE 2019-04-15 DATE 2019-04-15	

AUTOCAD.DWG

STANDARD (100)

NO.	QTY.	PART NAME	MATERIAL	FINISH
1	1	ELECTRICAL BOX	S/S 304	N/A
2	1	DISCONNECT SWITCH	N/A	N/A
3	1	AIR EXHAUST DUCT	S/S 316L	25-35 µin as Ra [.63-.88 µm as Ra]
4	1	AIR INTAKE	S/S 316L	25-35 µin as Ra [.63-.88 µm as Ra]
5	1	PNEUMATIC BLOCK VALVE	N/A	N/A
6	1	LOAD DOOR HANDLE	S/S 304	25-35 µin as Ra [.63-.88 µm as Ra]
7	1	FILTER, AIR INTAKE (99.99%)	S/S 304 / FIBERGLASS / ALUMINIUM	N/A
8	2	EMERGENCY STOP BUTTON	N/A	N/A
9	1	LOAD SIDE OPERATOR INTERFACE	N/A	N/A
10	1	IDENTIFICATION NAMEPLATE	S/S 304	25-35 µin as Ra [.63-.88 µm as Ra]
11	2	LOWER SERVICE ACCESS PANEL	S/S 304	25-35 µin as Ra [.63-.88 µm as Ra]
12	1	LOAD DROP DOWN DOOR	INT. S/S 316L, EXT. S/S 304 GLASS / SILICONE	INT. 20 µin as Ra [.51 µm as Ra] 15 µin as RA [.38 µm as RA]
13	1	CHEMICAL INJECTION PUMP COMPARTMENT	S/S 304	25-35 µin as Ra [.63-.88 µm as Ra]
		DETERGENT INJECTOR	TEFLON	N/A
		CHECK VALVE DETERGENT INJECTION	PVDF/ EPDM	N/A
		FOOT VALVE	VITON	N/A
		LEVEL SENSOR (FLOAT)	POLYPROPELENE	N/A
		TUBING	POLYPROPELENE	N/A
14	1	HOPE INDUSTRIAL KEYBOARD/POINTER (KB-DT5K-PM45)	N/A	N/A

△ B

DOUBLE DOOR (200)

NO.	QTY.	PART NAME	MATERIAL	FINISH
A1	1	UNLOAD DROP DOWN DOOR	INT. S/S 316L, EXT. S/S 304 GLASS / SILICONE	INT. 20 µin as Ra [.51 µm as Ra] 15 µin as RA [.38 µm as RA]
A2	1	UNLOAD DOOR HANDLE	S/S 304	25-35 µin as Ra [.63-.88 µm as Ra]

NON-RECIRCULATED FINAL RINSE (FU12-0053)

NO.	QTY.	PART NAME	MATERIAL	FINISH
B1	1	NON-RECIRCULATED FINAL RINSE TANK	S/S 316L / SILICONE	20 µin as Ra [.51 µm as Ra]
B2	1	VACCUUM PRESSURE SWITCH	S/S 316L	8 µin as Ra [.20 µm as Ra]
B3	1	HYDROPHOBIC FILTER HOUSING	S/S 316L	INT. 16 µin as Ra [.41 µm as Ra]

STAINLESS STEEL CABINET ENCLOSURE PANELS (FU12-0012 OR FU12-0013 OR FU12-0014)

NO.	QTY.	PART NAME	MATERIAL	FINISH
C1	2	CABINET ENCLOSURE PANELS	S/S 304	25-35 µin as Ra [.63-.88 µm as Ra]

MANIFOLD DRYING SYSTEM (FU12-0081)


NO.	QTY.	PART NAME	MATERIAL	FINISH
E1	1	DRYING HEATER BOX	S/S 304	25-35 µin as Ra [.63-.88 µm as Ra]
E2	2	DRYING HEPA FILTER	S/S 304 / FIBERGLASS / ALUMINIUM	N/A
E3	1	MANIFOLD DRYING BLOWER	ALUMINIUM / PAINTED STEEL	N/A
E4	1	CHAMBER DRYING BLOWER	S/S 304	N/A
E5	1	DRYING PRE-FILTER	SYNTHETIC FIBER / GALVANIZED STEEL	N/A

TOTAL ORGANIC CARBON MONITORING (TOC) (FU12-0084)

NO.	QTY.	PART NAME	MATERIAL	FINISH
F1	1	TOTAL ORGANIC CARBON MONITORING (TOC) BOX	S/S 304	N/A

PROCESS MONITORING PACKAGE (FU12-0082) - INCLUDED IN TOC (FU12-0084)

NO.	QTY.	PART NAME	MATERIAL	FINISH
H1	1	THERMAL PRINTER	N/A	N/A
H2	1	CONDUCTIVITY ANALYSER	ABS / POLYCARBONATE	N/A
H3	1	SAMPLE VALVE ACCESS DOOR	S/S 304	25-35 µin as Ra [.63-.88 µm as Ra]

	STERIS Canada Corporation <small>This document contains confidential and proprietary information of STERIS Corporation. Neither this document nor the information herein are to be reproduced, distributed, used or disclosed, either in part or in whole, except as specifically authorized by STERIS Corporation.</small>	TITLE Reliance® 680PG Pharmaceutical Grade Washer GENERAL ARRANGEMENT
	DWN. M.O. CKD. ENG. DATE 2017-07-13 DATE 2019-04-15 DATE 2019-04-15	DWG. NO. 920-525-263

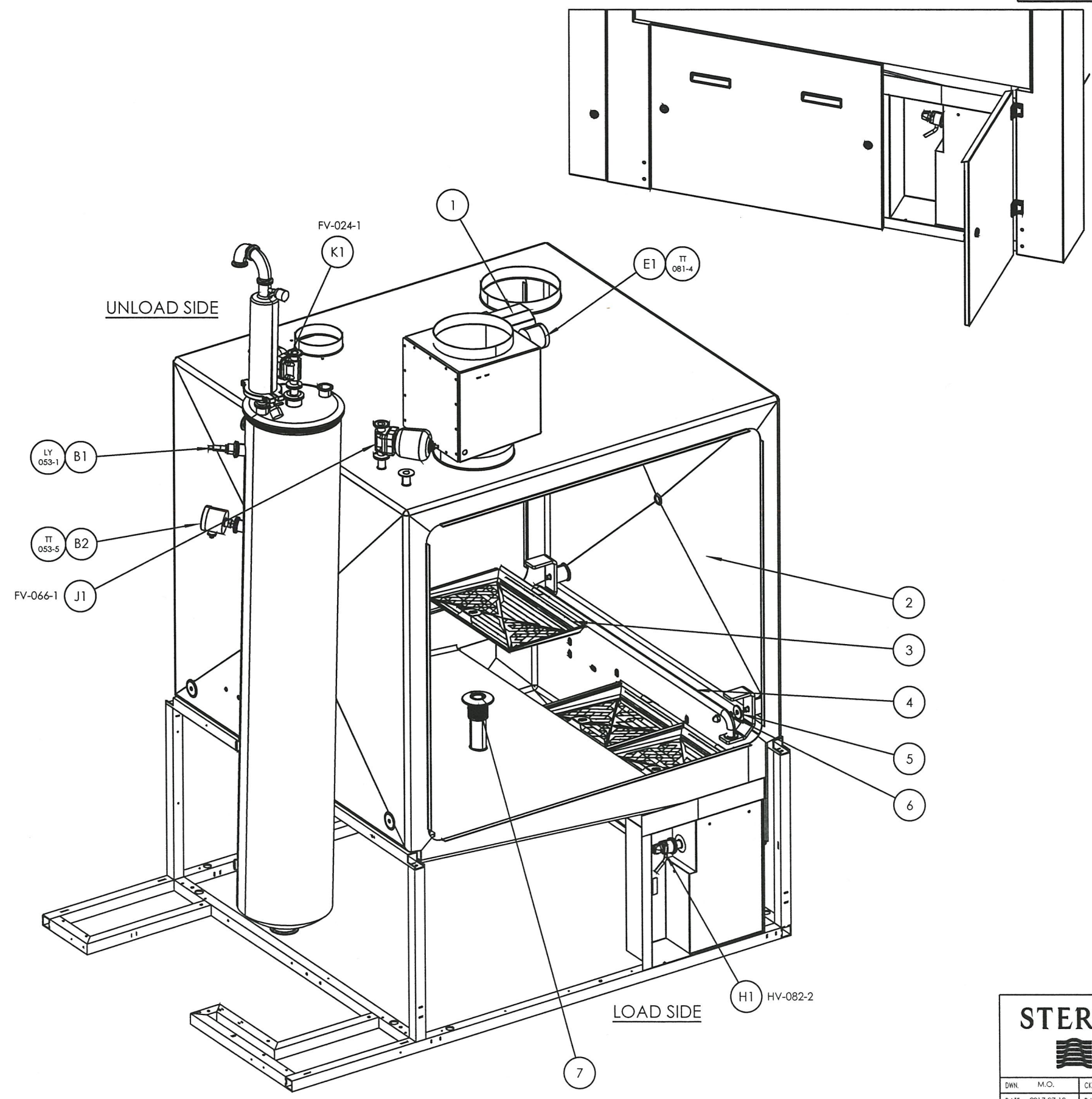
AUTOCAD.DWG

AUTOCAD.DWG

WASH CHAMBER

A
B
C
D
E
F
H

AUTOCAD DWG.



STANDARD (100)

NO.	QTY.	PART NAME	MATERIAL	FINISH
1	1	INTERIOR LIGHT	GLASS / SILICONE	N/A
2	1	WASH CHAMBER	S/S 316L	20 µin (RA) [.51 µm as Ra]
3	3	FILTER	S/S 316L	20 µin as RA [.51 µm as RA]
4	1	LOADING RACK	S/S 316L	20 µin as RA [.51 µm as RA]
5	1	WASHER	TEFLON	N/A
6	1	O-RING	SILICONE	N/A
7	1	MANIFOLD AND SPRING CONNECTOR	S/S 316L / UHMW	N/A

NON-RECIRCULATED FINAL RINSE (FU12-0053)

NO.	QTY.	PART NAME	MATERIAL	FINISH
B1	1	NON-RECIRCULATED FINAL RINSE HIGH WATER LEVEL SENSOR	TEFLON ADAPTOR	N/A
B2	1	NON-RECIRCULATED FINAL RINSE TEMPERATURE TRANSMITTER	S/S 316L	15 µin as RA [.38 µm as RA]

MANIFOLDED DRYING SYSTEM (FU12-0081)

NO.	QTY.	PART NAME	MATERIAL	FINISH
E1	1	EXHAUST TEMPERATURE TRANSMITTER	S/S 316L / TEFLON	8 µin as Ra [.20 µm as Ra]

PROCESS MONITORING PACKAGE (FU12-0082) - INCLUDED IN TOC (FU12-0084)

NO.	QTY.	PART NAME	MATERIAL	FINISH
H1	1	DRAIN SAMPLE VALVE	S/S 316L / EPDM	20 µin as RA [.51 µm as RA]

INLET VALVE FOR WASH CHAMBER (FU12-0066)

NO.	QTY.	PART NAME	MATERIAL	FINISH
J1	1	SUMP FILL VALVE, 1"[25] DIAPHRAGM	S/S 316L / TEFLON	20 µin as RA [.51 µm as RA]

INLET FOR FINAL RINSE TANK VALVE (FU12-0024)

NO.	QTY.	PART NAME	MATERIAL	FINISH
K1	1	NON-RECIRCULATED FINAL RINSE FILL VALVE, 1"[25] DIAPHRAGM	S/S 316L / TEFLON	20 µin as RA [.51 µm as RA]

		STERIS Canada Corporation <small>This document contains confidential and proprietary information of STERIS Corporation. Neither this document nor the information herein are to be reproduced, distributed, used or disclosed, either in part or in whole, except as specifically authorized by STERIS Corporation.</small>	TITLE Reliance® 680PG Pharmaceutical Grade Washer GENERAL ARRANGEMENT
DWG. NO. 920-525-263 DATE 2017-07-13	M.O. CID. 2019-04-15 DATE 2019-04-15	ENG. [Signature] DATE 2019-04-15	3 SHEET OF 6 AUTOCAD DWG.

PUMP INLET

ENGINEERING CHANGE	REV NO	REVISION DATE
KEYBOARD KIT	B	2019-04-15

STANDARD (100)

NO.	QTY.	PART NAME	MATERIAL	FINISH
1	1	RECIRCULATION PUMP AND MOTOR	S/S 316L (PUMP) VITON (SEAL)	20 µin as RA [.51 µm as Ra]
2	A/R	CLAMP, SANITARY TYPE	S/S 304	N/A
3	A/R	GASKET, SAMITARY TYPE	SILICONE	N/A
4	A/R	PIPING, SANITARY TYPE	S/S 316L	20 µin as RA [.51 µm as RA]

NON-RECIRCULATED FINAL RINSE (FU12-0053)

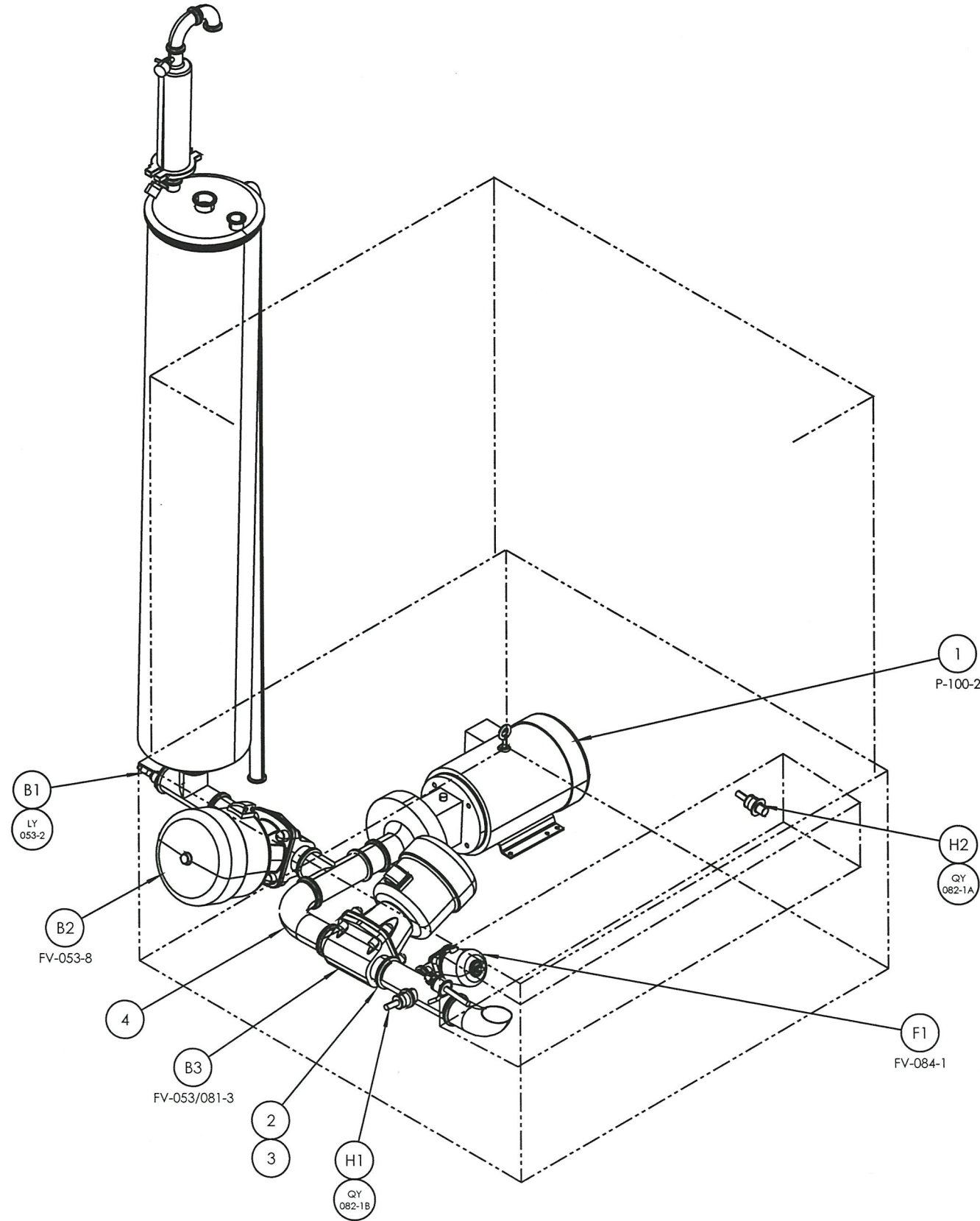
NO.	QTY	PART NAME	MATERIAL	FINISH
B1	1	NON-RECIRCULATED FINAL RINSE LOW WATER LEVEL SENSOR	TEFLON ADAPTOR	N/A
B2	1	NON-RECIRCULATED FINAL RINSE OUTLET VALVE 3"[76] DIAPHRAGM VALVE	S/S 316L / TEFLON	20 µin as RA [.51 µm as Ra]

PROCESS MONITORING PACKAGE (FU12-0082) - INCLUDED IN TOC (FU12-0084)

NO.	QTY.	PART NAME	MATERIAL	FINISH
H1	1	CHEMICAL INJECTION CONDUCTIVITY PROBE	S/S 316L / PEEK	N/A
H2	1	FINAL RINSE CONDUCTIVITY PROBE	S/S 316L	15 µin as RA [.38 µm as RA]

TOTAL ORGANIC CARBON MONITORING (TOC) (FU12-0084)

NO.	QTY.	PART NAME	MATERIAL	FINISH
F1	1	TOTAL ORGANIC CARBON 1"[25] DIAPHRAGM VALVE	S/S 316L / TEFLON	20 µin as RA [.51 µm as RA]



	STERIS Canada Corporation	TITLE	Reliance® 680PG Pharmaceutical Grade Washer GENERAL ARRANGEMENT
	<small>This document contains confidential and proprietary information of STERIS Corporation. Neither this document nor the information herein are to be reproduced, distributed, used or disclosed, either in part or in whole, except as specifically authorized by STERIS Corporation.</small>		
DWN. M.O. CKD.	ENG.	DWG. NO.	920-525-263
DATE 2017-07-13	DATE 2019-04-15	DATE 2019/04/16	4 SHEET OF 6

AUTOCAD.DWG

AUTOCAD.DWG

PUMP OUTLET

ENGINEERING CHANGE	REV. NO.	REVISION DATE
KEYBOARD KIT	B	2019-04-15

STANDARD (100)

NO.	QTY.	PART NAME	MATERIAL	FINISH
1	3	TOP AND SIDES ROTARY SPRAY ARMS	S/S 316L / PVDF	20 µin as RA [.51 µm as RA]
2	1	SUMP TEMPERATURE TRANSMITTER	S/S 316L	15 µin as RA [.38 µm as RA]
3	1	DRAIN VALVE, 2" [50] DIAPHRAGM VALVE	S/S 316L / TEFLON	20 µin as RA [.51 µm as RA]
4	1	SUMP COMPLETE DRAIN WATER LEVEL SENSOR	TEFLON ADAPTOR	N/A
5	A/R	PIPING, SANITARY TYPE	S/S 316L	20 µin as RA [.51 µm as RA]
6	1	SUMP HIGH WATER LEVEL SENSOR	TEFLON ADAPTOR	N/A

NON-RECIRCULATED FINAL RINSE (FU11-0053)

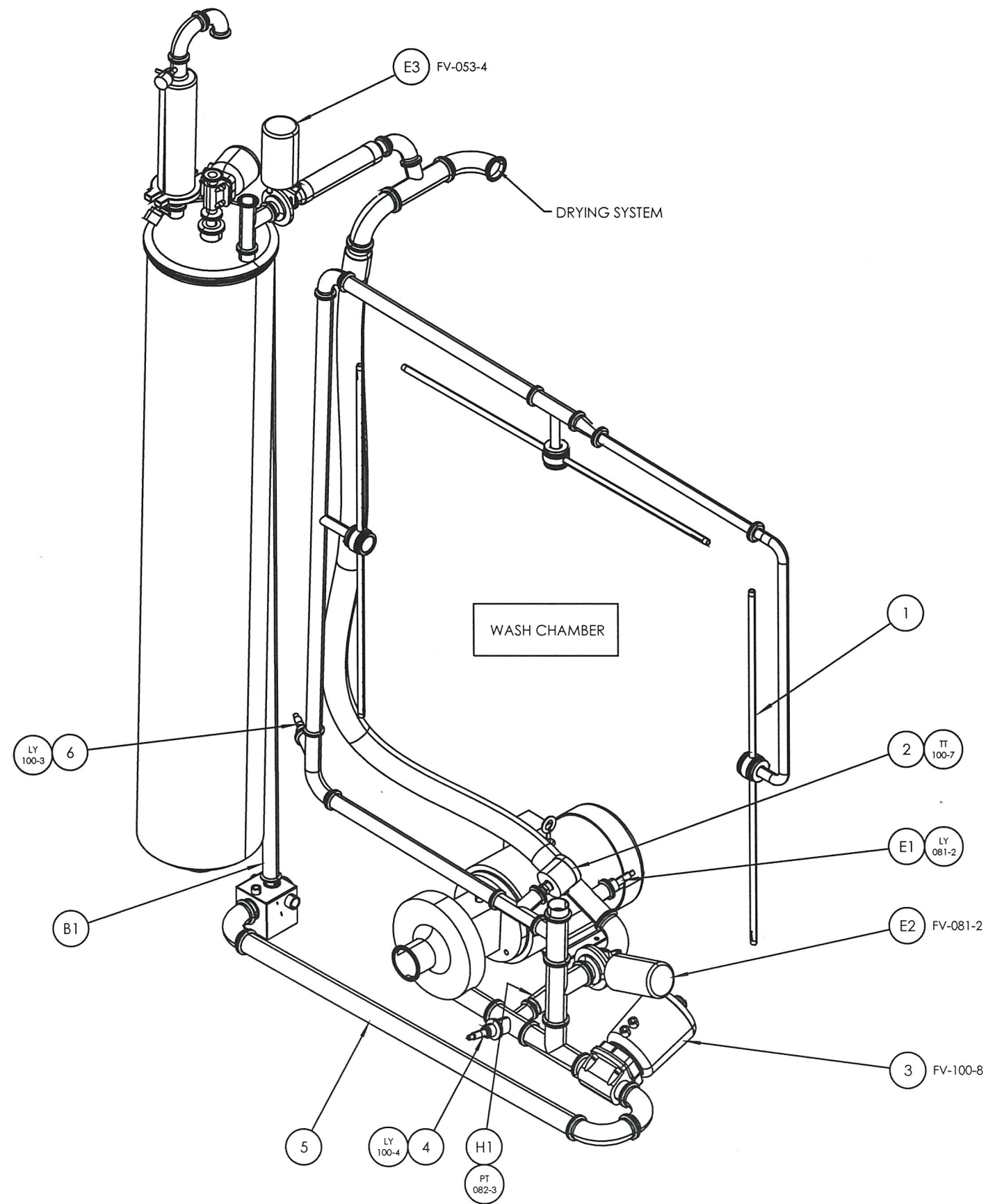
NO.	QTY.	PART NAME	MATERIAL	FINISH
B1	1	NON-RECIRCULATED FINAL RINSE OVERFLOW LINE	S/S 316L	20 µin as RA [.51 µm as RA]

MANIFOLDED DRYING SYSTEM (FU12-0081)

NO.	QTY.	PART NAME	MATERIAL	FINISH
E1	1	DRYING WATER LEVEL SENSOR	TEFLON ADAPTOR	N/A
E2	1	MANIFOLD DRYING ISOLATION VALVE, 2" [50] BUTTERFLY VALVE	S/S 316L / SILICONE	20 µin as RA [.51 µm as RA]
E3	1	TANK DRYING ISOLATION VALVE, 1 1/2" [38] BUTTERFLY VALVE	S/S 316L / SILICONE	20 µin as RA [.51 µm as RA]

PROCESS MONITORING PACKAGE (FU12-0082) - INCLUDED IN TOC (FU12-0084)

NO.	QTY.	PART NAME	MATERIAL	FINISH
H1	1	PUMP OUTLET PRESSURE TRANSMITTER	S/S 316	10 µin as RA [.25 µm as RA]



	STERIS Canada Corporation	TITLE	Reliance® 680PG Pharmaceutical Grade Washer GENERAL ARRANGEMENT
	<small>This document contains confidential and proprietary information of STERIS Corporation. Neither this document nor the information herein are to be reproduced, distributed, used or disclosed, either in part or in whole, except as specifically authorized by STERIS Corporation.</small>		
DWN. M.O. CKD. BNG.	DATE 2017-07-13 DATE 2019-04-15 DATE 2019-04-15	DWG. NO.	920-525-263
		5 SHEET OF	6

AUTOCAD.DWG

STEAM PIPING

ENGINEERING CHANGE	REV NO	REVISION DATE
KEYBOARD KIT	B	2019-04-15

STANDARD (100)

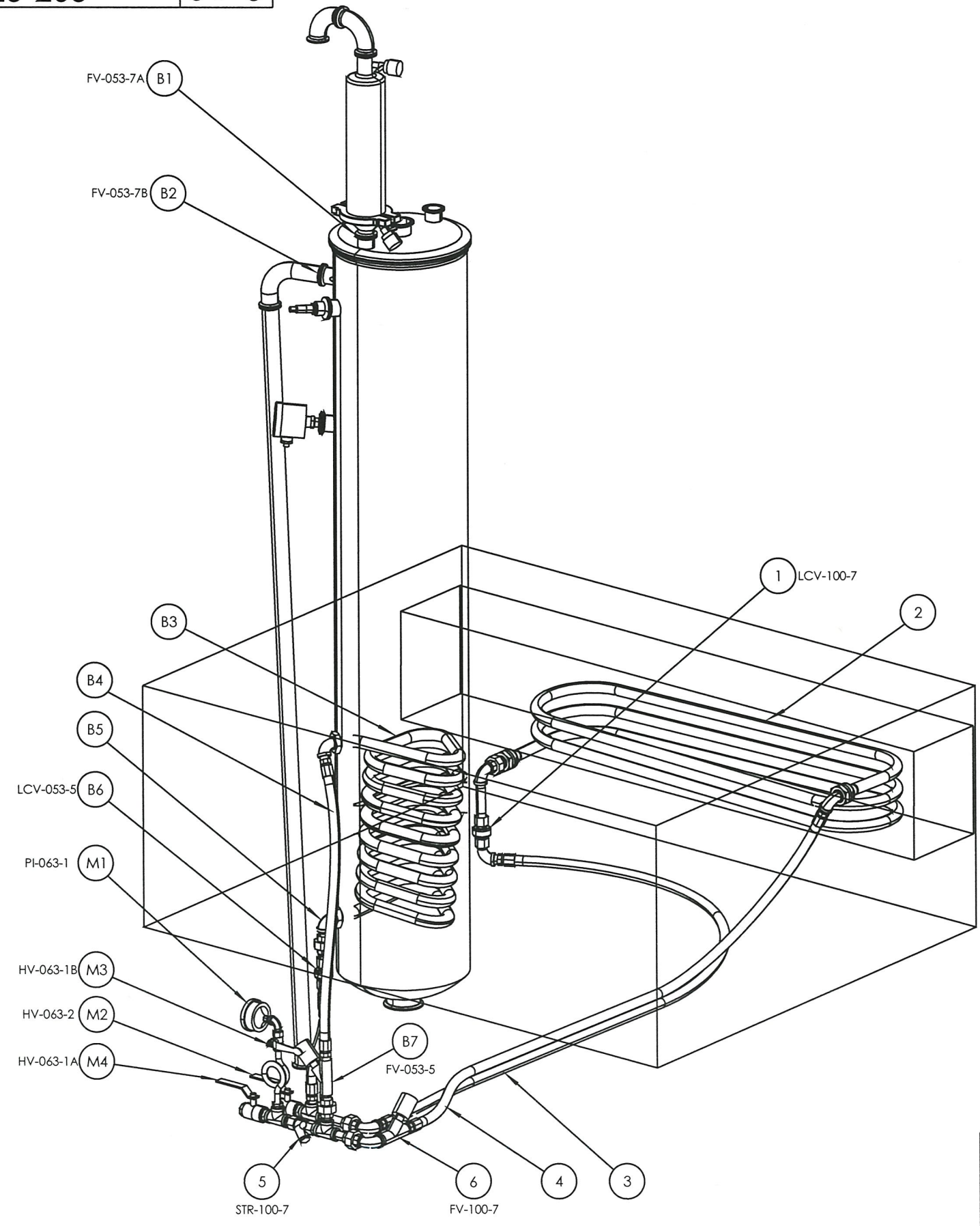
NO.	QTY.	PART NAME	MATERIAL	FINISH
1	1	SUMP STEAM TRAP	S/S 316L	N/A
2	1	SUMP STEAM COIL	S/S 316L / TEFLON	20 µin as Ra [.51 µm as Ra]
3	1	CONDENSATE RETURN PIPING (FROM SUMP)	S/S 316 / TEFLON	N/A
4	1	STEAM SUPPLY PIPING (TO SUMP)	S/S 316 / TEFLON	N/A
5	1	STEAM INLET STRAINER	S/S 316	N/A
6	1	SUMP STEAM VALVE	S/S 316L	N/A

NON-RECIRCULATED FINAL RINSE (FU12-0053)

NO.	QTY.	PART NAME	MATERIAL	FINISH
B1	1	NON-RECIRCULATED FINAL RINSE CHECK VALVE	S/S 316L / EPDM	20 µin as RA [.51 µm as Ra]
B2	1	NON-RECIRCULATED FINAL RINSE CHECK VALVE	S/S 316L / EPDM	20 µin as RA [.51 µm as Ra]
B3	1	NON-RECIRCULATED FINAL RINSE STEAM COIL	S/S 316L / TEFLON	20 µin as Ra [.51 µm as Ra]
B4	1	STEAM SUPPLY PIPING (TO NON-RECIRCULATED FINAL RINSE)	S/S 316 / TEFLON	N/A
B5	1	CONDENSATE RETURN PIPING (FROM NON-RECIRCULATED FINAL RINSE)	S/S 316 / TEFLON	N/A
B6	1	NON-RECIRCULATED FINAL RINSE STEAM TRAP	S/S 316L	N/A
B7	1	NON-RECIRCULATED FINAL RINSE STEAM VALVE	S/S 316L	N/A

STEAM AND WATER UTILITY ISOLATION VALVES AND PRESSURE GAUGES (FU12-0063)

NO.	QTY.	PART NAME	MATERIAL	FINISH
M1	1	STEAM PRESSURE GAUGE	S/S 316L / S/S 304	N/A
M2	1	CONDENSATE RETURN ISOLATION BALL VALVE	S/S 316	N/A
M3	1	PRESSURE GAUGE ISOLATION BALL VALVE	S/S 316	N/A
M4	1	STEAM INLET ISOLATION BALL VALVE	S/S 316	N/A



	STERIS Canada Corporation	TITLE	Reliance® 680PG Pharmaceutical Grade Washer GENERAL ARRANGEMENT
	<small>This document contains confidential and proprietary information of STERIS Corporation. Neither this document nor the information herein are to be reproduced, distributed, used or disclosed, either in part or in whole, except as specifically authorized by STERIS Corporation.</small>		
DWN. M.O. CKD. BKG.	DATE 2017-07-13 DATE 2019-04-15 DATE 2019-04-15	DWG. NO.	920-525-263
			6 SHEET OF 6

AUTOCAD.DWG