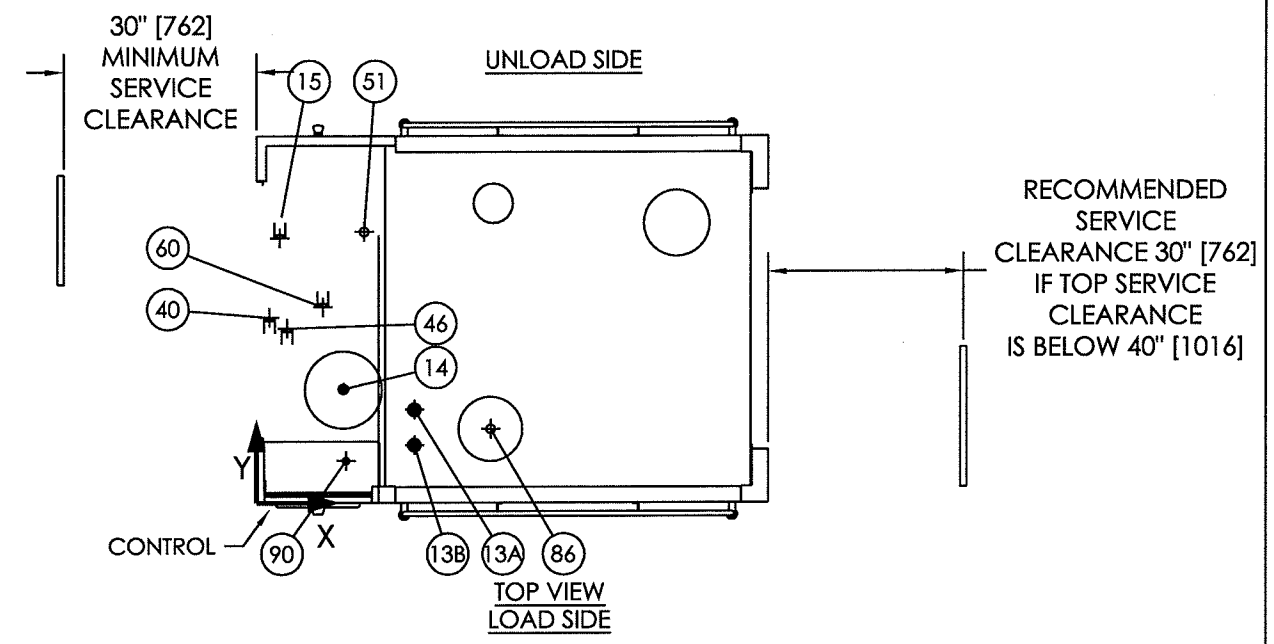
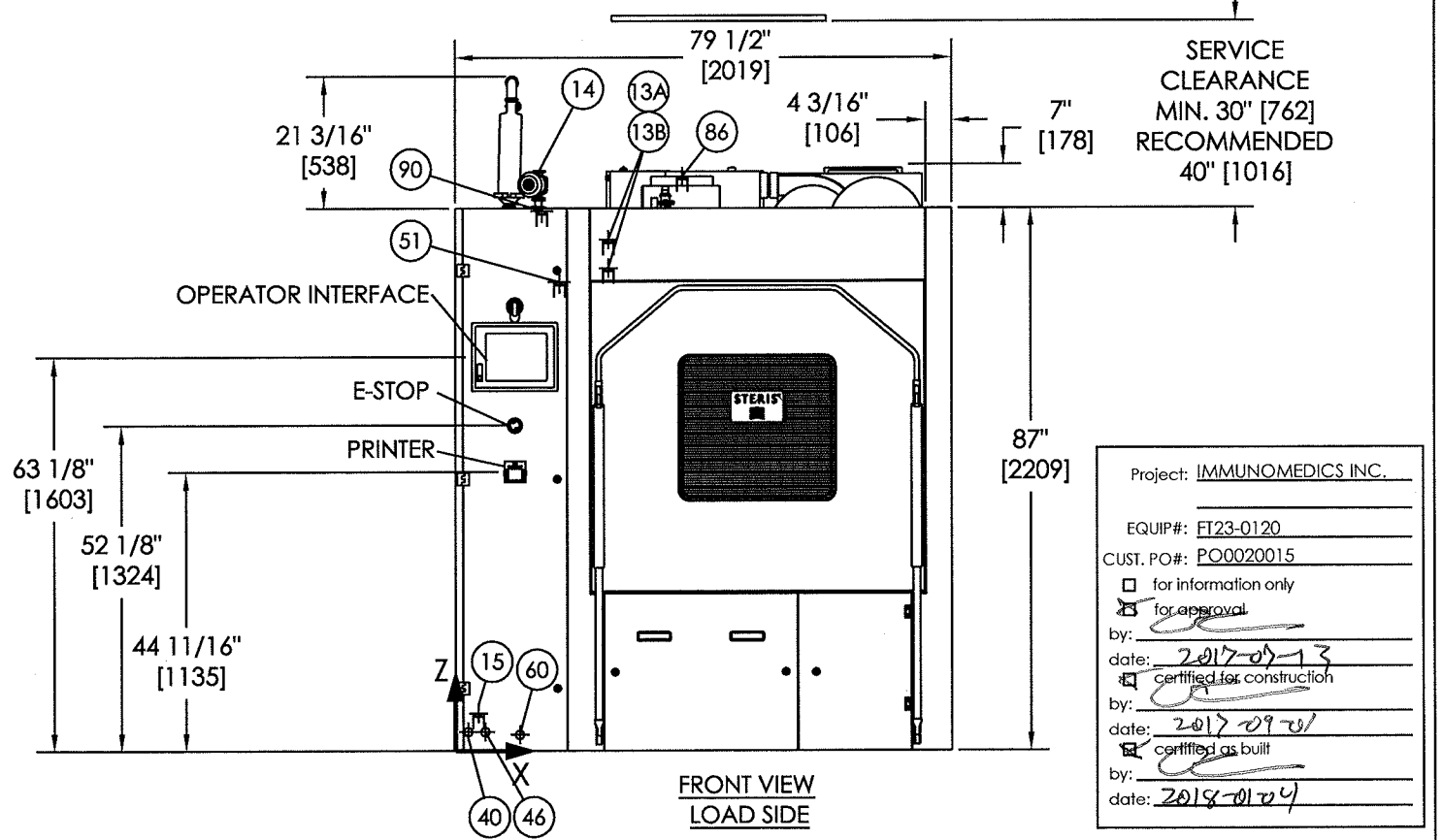
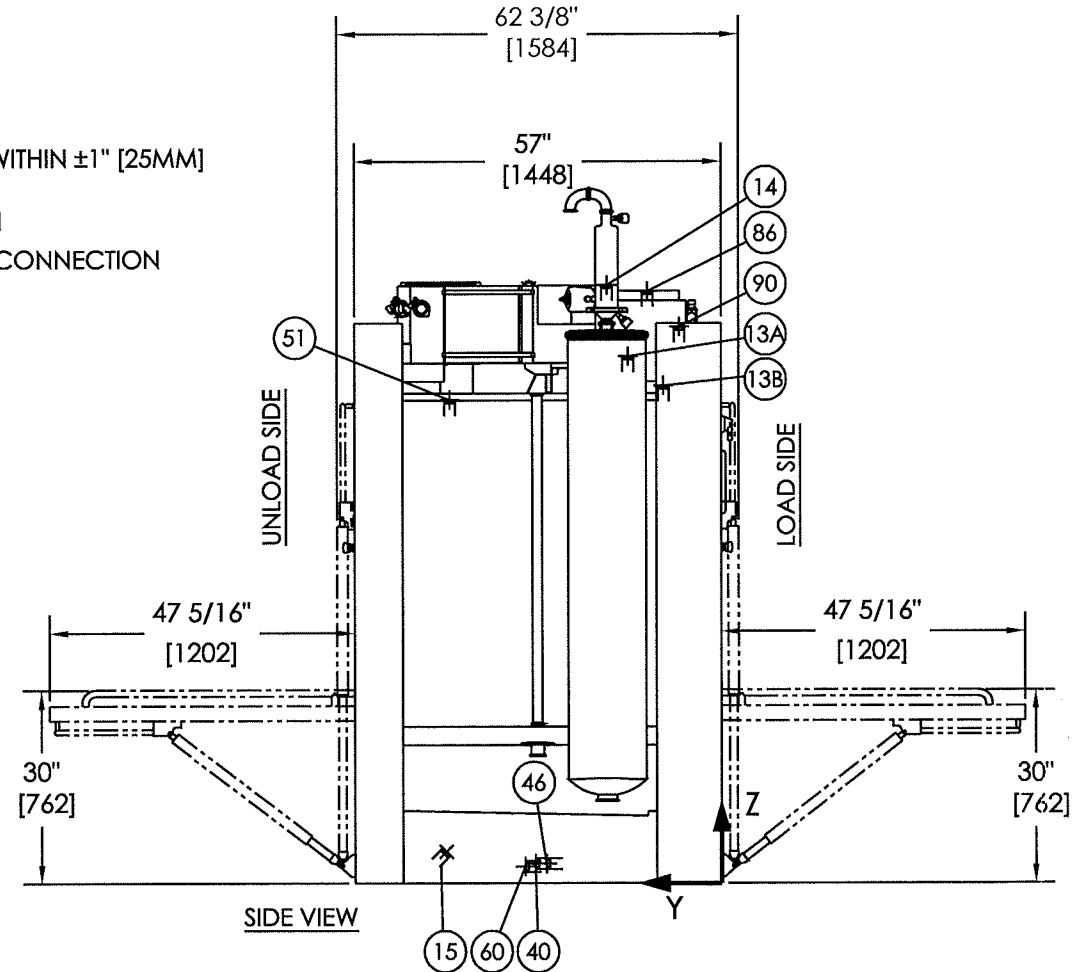


LEFT SIDE SERVICE CONFIGURATION

UTILITIES	SIZE	CONNECTION TYPE	PRESSURE REQUIRED		TEMP. MAX	FLOW	CONSUMPTION (NOTE 11)	POSITION		
			DYNAMIC	STATIC				X	Y	Z
[14] NON-RECIRCULATED FINAL RINSE WATER INLET (PORT 3) (NOTE 6) FU12-0053	1" (25 mm)	TRI-CLAMP	5 psig MAX. (0.3 bar) WITH STERIS VALVE	90 psig MAX. (6.2 bar) WITH STERIS VALVE	MIN: 70°F (21°C) MAX: 194°F (90°C)	15-25 usgpm (56-94 lpm)	63 USG (237 L)	13 1/2" [342 mm]	17 11/16" [450 mm]	93" [2362 mm]
[13A] SUMP WATER INLET (NOTE 6) (PORT 1)	1" (25 mm)	TRI-CLAMP	5 psig MAX. (0.3 bar) WITH STERIS VALVE	90 psig MAX. (6.2 bar) WITH STERIS VALVE	MIN: 70°F (21°C) MAX: 194°F (90°C)	15-25 usgpm (56-94 lpm)	112 USG (424 L)	24 1/2" [622 mm]	14 1/2" [368 mm]	81 7/8" [2080 mm]
[13B] SUMP WATER INLET (NOTE 6) (PORT 2) (CAPPED)	1" (25 mm)	TRI-CLAMP	5 psig MAX. (0.3 bar) WITH STERIS VALVE	90 psig MAX. (6.2 bar) WITH STERIS VALVE	MIN: 70°F (21°C) MAX: 194°F (90°C)	15-25 usgpm (56-94 lpm)	N/A	24 1/2" [622 mm]	9" [229 mm]	77 3/8" [1965 mm]
[40] PLANT STEAM	1/2" (15 mm)	NPT	30 to 50 psig (2.1 to 3.5 bar)	90 psig MAX (6.2 bar)	N/A	220 to 300 lbs/hr (100 to 136 kg/h)	150 LBS (68 kg) (NOTE 10, 12)	2" [51 mm]	28 13/16" [732 mm]	3 1/16" [78 mm]
[46] CONDENSATE RETURN (NOTE 8)	1/2" (15 mm)	NPT	N/A		N/A	0.6 usgpm (2.26 lpm)	N/A	4 3/4" [121 mm]	27 1/8" [689 mm]	3 1/16" [78 mm]
[60] DRAIN CONNECTION (NOTE 9)	2" (50 mm)	TRI-CLAMP	N/A		N/A	50 usgpm (188 lpm)	N/A	10 1/4" [261 mm]	30 7/16" [774 mm]	2 5/8" [67 mm]
[51] PLANT AIR	3/8" (10 mm)	O.D.	80 to 125 psig (5.5 to 8.6 bar)	125 psig MAX (8.6 bar)	N/A	15 scfm (.4 m³/min.)	N/A	16 11/16" [424 mm]	42 1/8" [1070 mm]	75 1/8" [1908 mm]
[86] EXHAUST (NOTE 7)	10" (254 mm)	I.D.	1/4" (6 mm) W.G. NEGATIVE STATIC PRESSURE		MAX: 185°F (85°C)	450 scfm (12.75 m³/min)	N/A	36 7/16" [925 mm]	11 1/2" [292 mm]	92 1/16" [2339 mm]
[90] ELECTRICITY 3~ (PHASE) SUPPLY REQUIRED	480 VOLT 60 Hz	3/4" (20 mm)	CONDUIT		N/A	N/A	22.5 KVA, 27A	13 15/16" [354 mm]	6 1/2" [166 mm]	86 1/2" [2197 mm]
[15] COLD LAB WATER DRAIN COOLING	3/4" (20 mm)	NPT	10 to 25 psig (0.7 to 1.7 bar)	90 psig (6.2 bar)	MAX: 70°F (21°C)	12-20 usgpm (45-75 lpm)	N/A	3 5/8" [92 mm]	41 5/8" [1057 mm]	5 7/8" [149 mm]



NOTE: ALL UTILITY CONNECTIONS ARE WITHIN ±1" [25MM] OF DIMENSIONS SPECIFIED.
 ⊕ = FACING CONNECTION
 ⊞ = SIDE OR TOP VIEW OF CONNECTION



Project: IMMUNOMEDICS INC.
 EQUIP#: FT23-0120
 CUST. PO#: PO0020015
 for information only
 for approval
 by: [Signature]
 date: 2017-07-13
 certified for construction
 by: [Signature]
 date: 2017-09-20
 certified as built
 by: [Signature]
 date: 2018-01-24

VOLTAGE	CONTROL	SERVICE SIDE	DOOR TYPE
480V	ALLEN-BRADLEY	LEFT	DOUBLE DOOR

REFERENCE FROM:
DRAWING # 920-512-996
REV. H

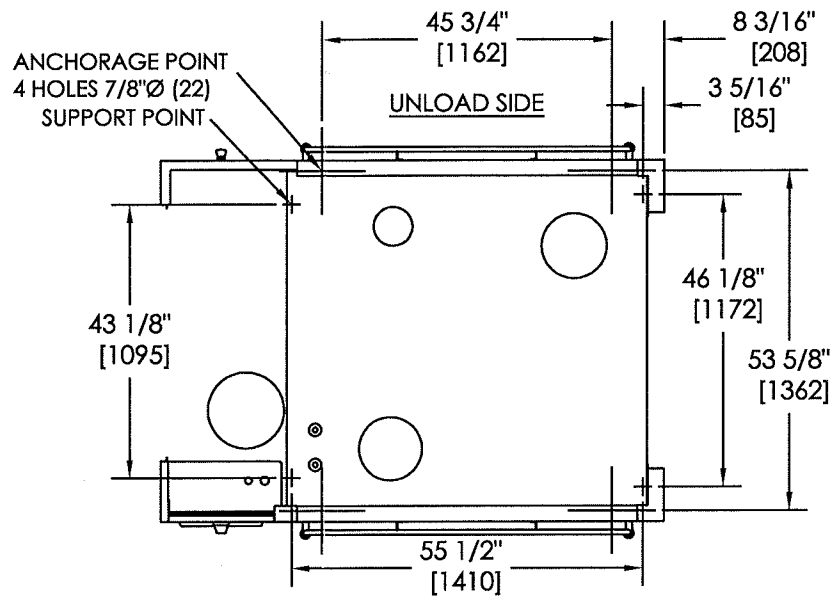
STERIS
 STERIS Canada Corporation
 This document contains confidential and proprietary information of STERIS Corporation. Neither this document nor the information herein are to be reproduced, distributed, used or disclosed, either in part or in whole, except as specifically authorized by STERIS Corporation.

DWG. NO. 920-525-261 1 SHEET OF 3

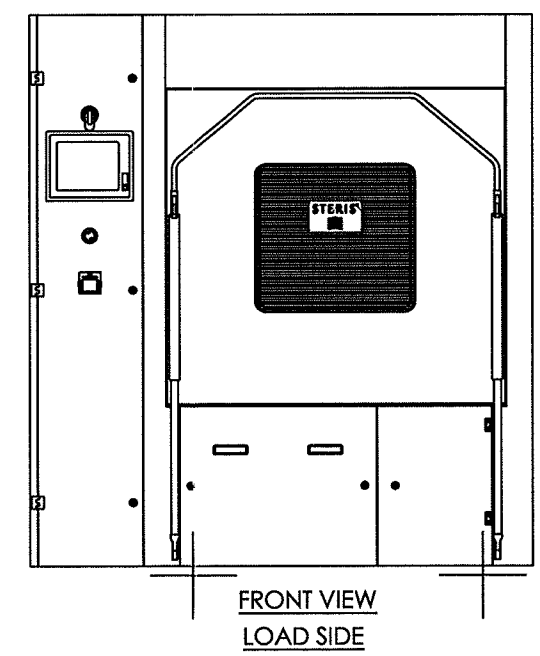
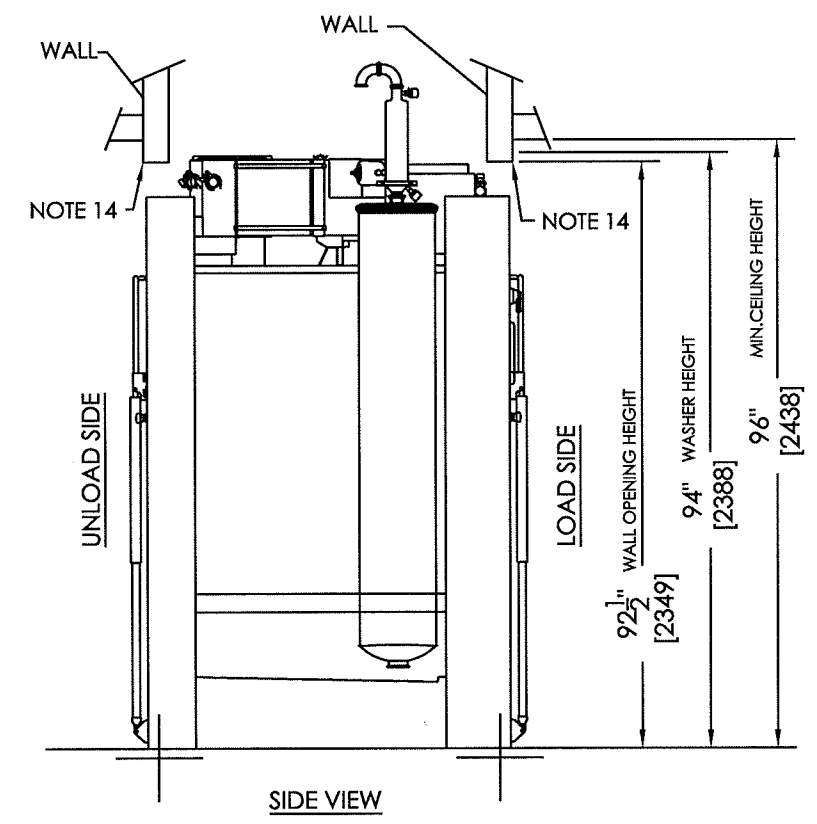
DATE 2017-07-13 DATE 2017/07/13 DATE 2017/07/13


LEFT SIDE SERVICE CONFIGURATION

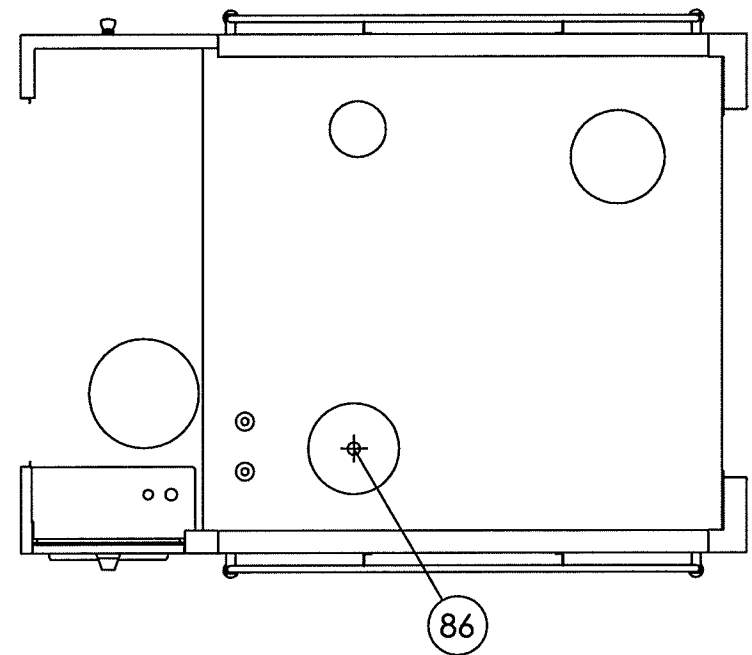
ENGINEERING CHANGE	REV. NO.	REVISION DATE
NEW DRAWING	A	2017-07-13



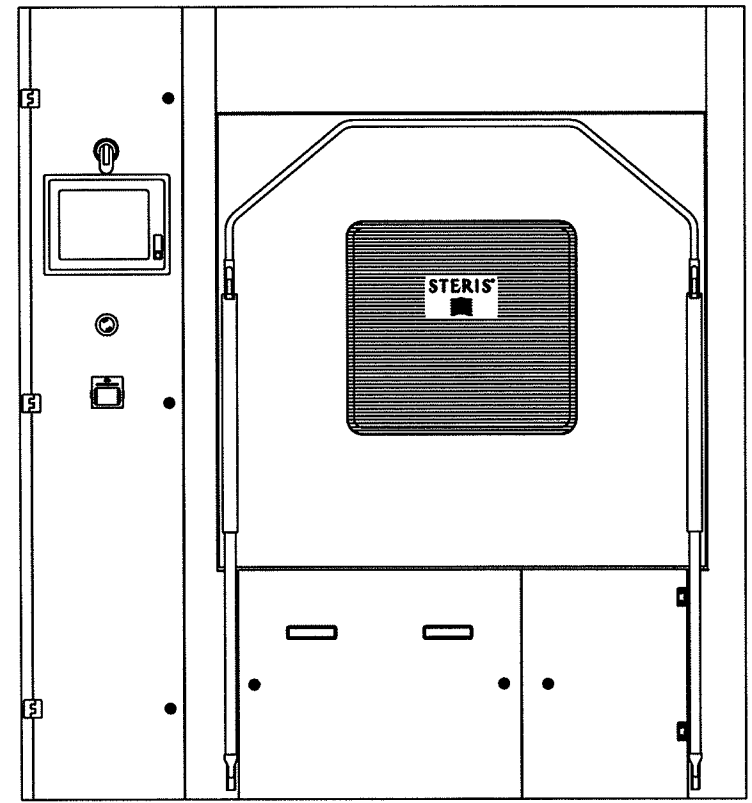
- NOTES:**
- 1- CUSTOMER MUST BE SURE THAT MACHINE STANDS ON A NON-COMBUSTIBLE FLOOR.
 - 2- ADDITIONAL SHUT-OFF VALVES, BACK FLOW PREVENTERS (WHERE APPLICABLE) AND FUSED DISCONNECT SWITCH (BY OTHERS) SHOULD BE INSTALLED ON UTILITY LINES AS REQUIRED ON THE EQUIPMENT. (NOT INCLUDED, INSTALL BY OTHERS.)
 - 3- PIPE SIZES SHOWN INDICATE TERMINAL OUTLETS ONLY FOR THE EQUIPMENT.
 - 4- OPERATING WEIGHT OF WASHER: 3000 lbs (1360 kg) (ESTIMATED)
 SHIPPING WEIGHT OF WASHER: 2500 lbs (1134 kg) (ESTIMATED)
 UNIT CRATE SIZE W x H x L
 74 1/2" [1892 mm] x 101 1/2" [2578 mm] x 85 1/2" [2172 mm].
 - 5- HEAT LOSS (AT 75°F (24°C) 40% R.H. AMBIENT):
 8000 Btu/h (2350 W) (SENSIBLE).
 - 6- CONNECTIONS SHOULD BE IN ACCORDANCE WITH LOCAL CODES.
 - 7- IT IS RECOMMENDED TO CONSTRUCT THE EXHAUST DUCT SYSTEM FROM STAINLESS STEEL AND SEAL THE JOINTS BY WELDING TO ENSURE A CORROSION RESISTANT AND LEAK PROOF SYSTEM FOR REMOVAL CONDENSED VAPOR. THE DUCT SHOULD HAVE DRIP LEG(S) INSTALLED AT ANY LOW POINT(S).
 - 8- CONDENSATE TO BE CONNECTED TO A NON-PRESSURIZED GRAVITY RETURN MAIN OR VENTED CONDENSATE RECEIVER. ADD 1/2 psi (3.45 kPa) FOR EACH 12" (305mm) OF CONDENSATE HEAD PRESSURE TO THE MINIMUM DYNAMIC STEAM PRESSURE. MAXIMUM RISE NOT TO EXCEED A TOTAL OF 15 feet (4.57 m) HEAD.
 - 9- A 4" (102 mm) O.D. FLOOR DRAIN IS RECOMMENDED WITH FLOOR SINK
 - 10- IT'S RECOMMENDED TO BRING A LINE ONE SIZE LARGER THAN THE CONNECTION POINT.
 - 11- ALL THE VALUES ARE BASED ON LIGHT CYCLE.
 - 12- BASED WITH AN INCOMING WATER TEMPERATURE OF 70°F (21°C).
 - 14- CONSIDERING HEIGHT OF THE WASHER, THOSE SECTIONS OF WALL SHOULD BE MADE AFTER WASHER IS IN PLACE.
 - 15- OPTION NOT PRESENT



STERIS 		STERIS Canada Corporation <small>This document contains confidential and proprietary information of STERIS Corporation. Neither this document nor the information herein are to be reproduced, distributed, used or disclosed, either in part or in whole, except as specifically authorized by STERIS Corporation.</small>	TITLE Reliance® 680PG Pharmaceutical Grade Washer EQUIPMENT DRAWING
DWG. NO. 920-525-261	DATE 2017-07-13	DATE 07/07/13	DATE 07-07-13
2 SHEET OF 3			



TOP VIEW
LOAD SIDE



FRONT VIEW
LOAD SIDE

RECOMMENDED EXHAUST CONFIGURATION

TO ADJUST MANUAL DAMPERS:

- 1-PROGRAM A CYCLE WITH A 10MIN DRYING PHASE.
- 2-START WITH THE "MAIN MANUAL DAMPER" CLOSED AND THE "TEE MANUAL DAMPER" OPEN AND EXHAUST (BY OTHERS) ON.
- 3-LEAVE THE WASHER'S CHAMBER EMPTY (W/O ACCESSORIES) AND REMOVE WATER CONNECTIONS (4).
- 4-START CYCLE.
- 5-WHEN WASHER IS IN DRYING PHASE, ADJUST THE "MAIN MANUAL DAMPER" IN ORDER TO AVOID AIR LEAK OUT THE 6" TEE BRANCH.
- 6-WHEN CYCLE IS COMPLETED, WITH THE DOOR(S) CLOSED, ADJUST THE "TEE MANUAL DAMPER" TO CREATE A PRESSURE OF -1/4"W.G. AT THE WASHER'S CONNECTION POINT.

EXHAUST BLOWER (BY OTHERS)
ACTIVATED BY WASHER'S SIGNAL

MAIN MANUAL DAMPER (6")

BY OTHERS
WASHER'S CONNECTION POINT

TEE MANUAL DAMPER (6")

Ø6" TEE BRANCH

Ø10" WASHER EXHAUST (STERIS)

STERIS 		STERIS Canada Corporation	<small>This document contains confidential and proprietary information of STERIS Corporation. Neither this document nor the information herein are to be reproduced, distributed, used or disclosed, either in part or in whole, except as specifically authorized by STERIS Corporation.</small>		TITLE Reliance® 680PG Pharmaceutical Grade Washer EQUIPMENT DRAWING
DWG. NO.	M.O.	CKD.	DATE	DATE	DATE
920-525-261	M.C.	M.C.	2017-07-13	M.C.	17-07-13
3					3

AUTOCAD.DWG