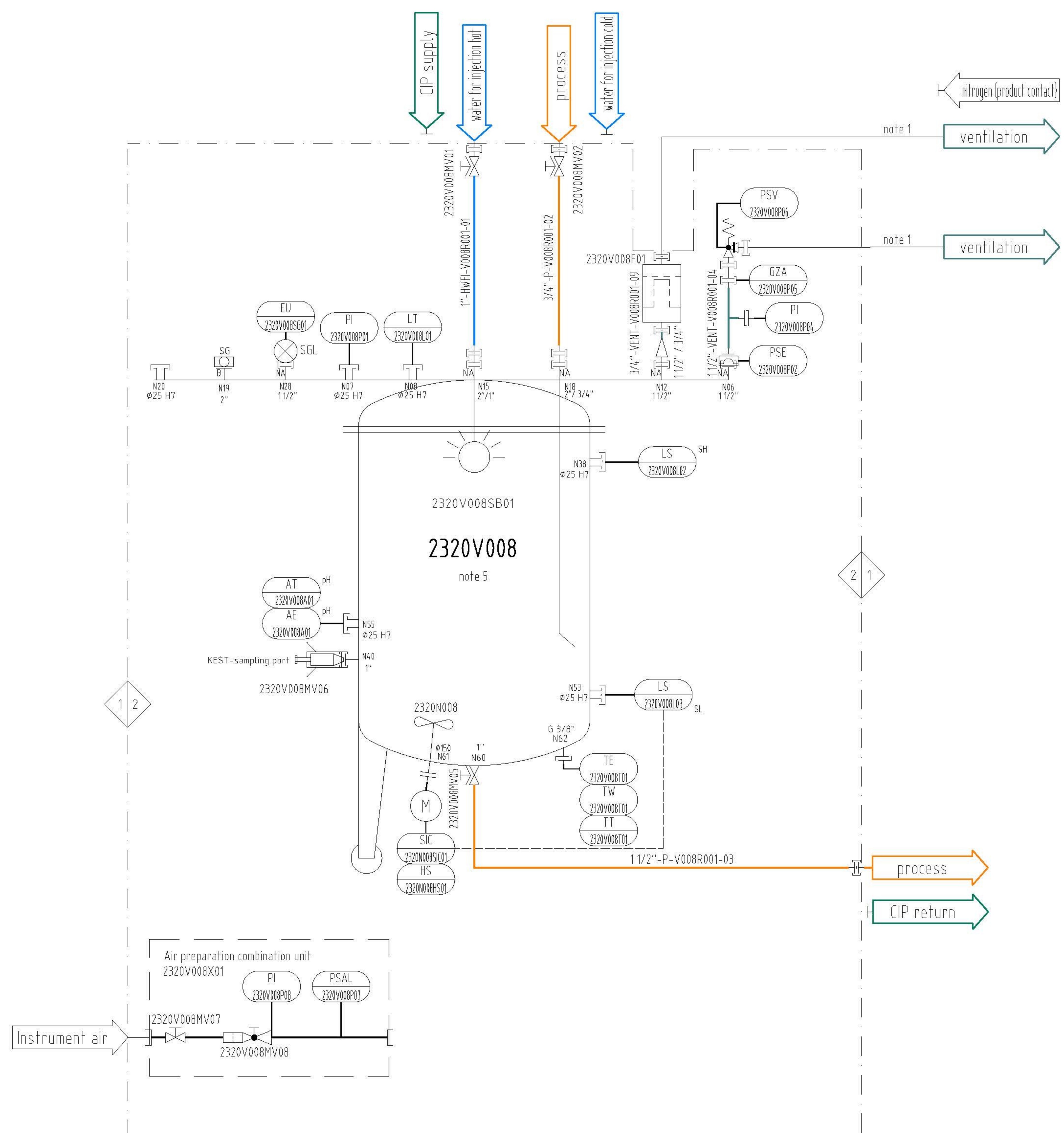


- note 1 to safe customer outside ventilation
- note 2 when 'fail open' applies, the valve symbol is labeled 'FO'
- note 3 flow directions are indicated by the media arrows
- note 4 all equipment within these boundaries (---) is supplied by Syntegon

customer 1 2 Pharmatec

- note 5 2320V008: 190L Solvent Tank
Pressure: -1 / 3 bar(g)
Temperature: -10 / 95°C
- note 6 general slope: $\geq 1\%$



0.1	07.05.2021	Kra	VK	revised acc. to notes from customer
0.0	03.05.2021	Kra	VK	first issue
Rev. / rev.	datum / date	geändert / changed	geprüft / checked	Änderungsbeschreibung / kind of revision
Ohne unsere schriftliche Genehmigung darf diese Zeichnung weder vervielfältigt noch dritten Personen zugänglich gemacht werden. Without our approval this drawing may neither be copied nor made available to third persons or competing parties.				
Projekt / project:		Projekt-Nr. / project no:		SYNTEGON Pharmatec GmbH, a Syntegon company Elisabeth-Boer-Strasse 3 • D-01099 Dresden Tel.: 0351 / 28 27 88 10 • Fax: 0351 / 28 27 86 30 www.syntegon.com
		B.130		
Kunden-Nr. / customer no:		---		
Benennung / description:				
PID Line 1-V008 190L SOLVENT TANK CURIE_BKL, BRKB60A-23-20				
Zeichn.-Nr. / drawing no:		Blatt/sheet:	Maßstab/scale:	Rev.
B.130.90.001.V008-R001		1/1	1:1	0.1
entstanden aus / developed from: ---				